



WHITEHORSES

Buy. Sell. Let. Relax!

0114 268 8533
info@whitehorses.com
www.whitehorses.com



56 Osborne Road, Sheffield

Sheffield

Guide Price **£350,000**

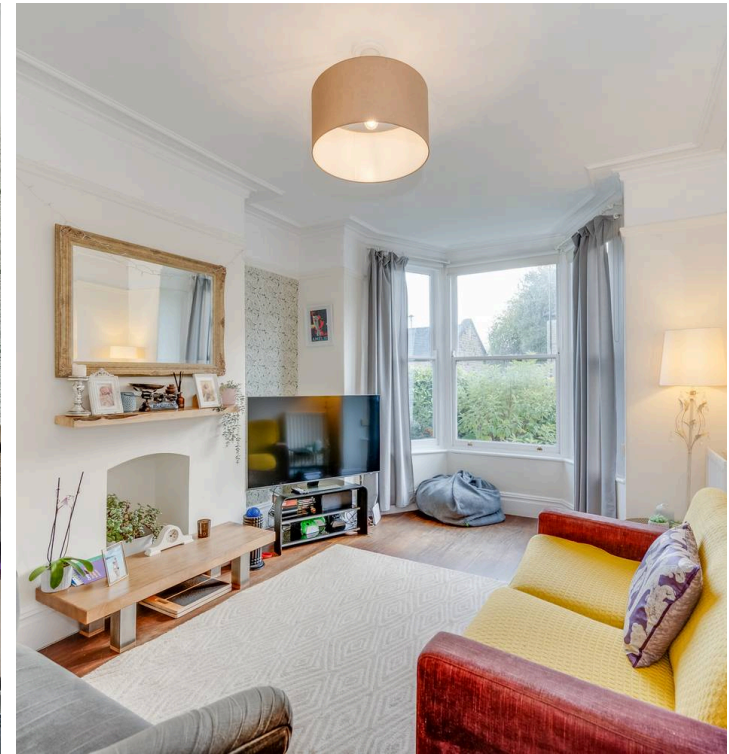
56 Osborne Road

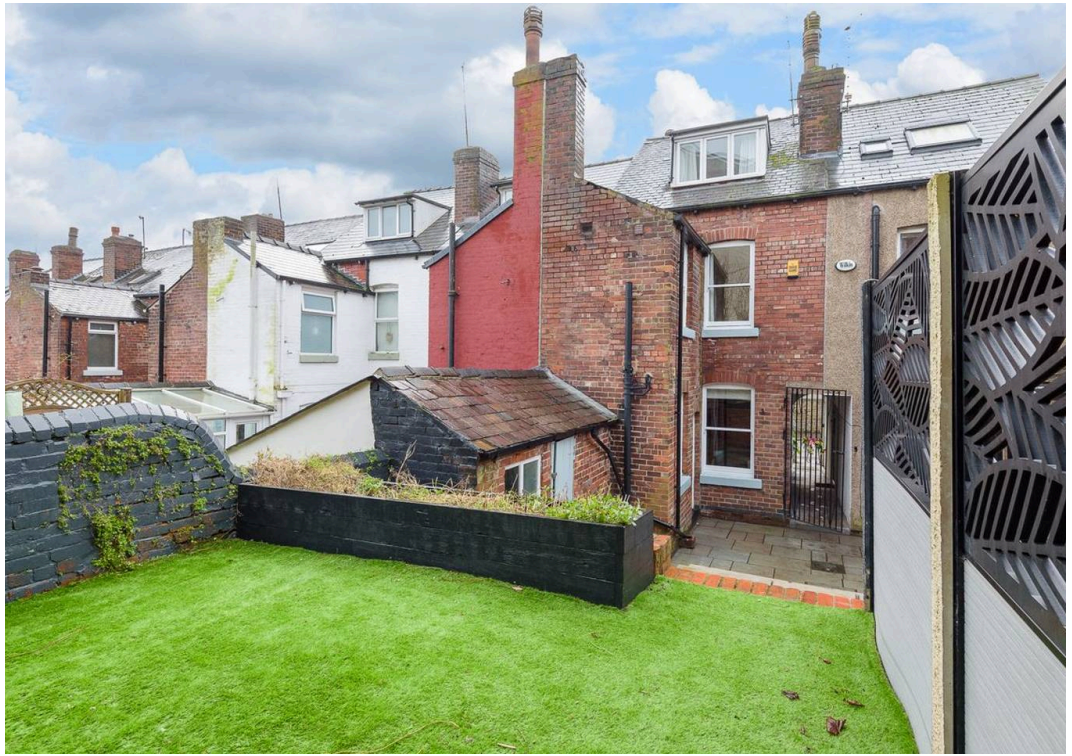
Sheffield, Sheffield

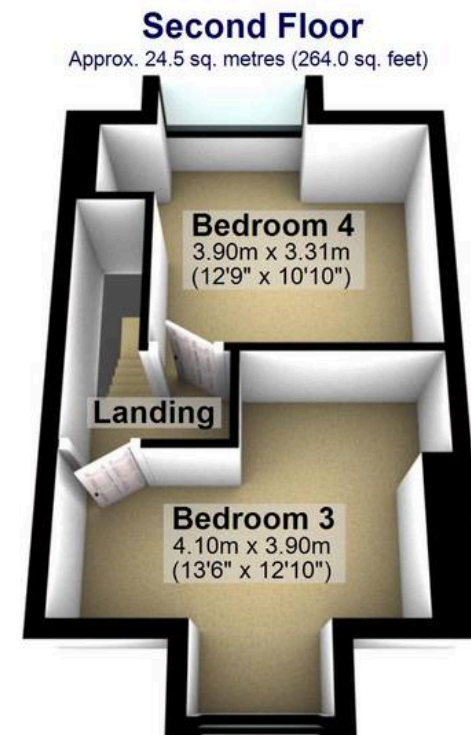
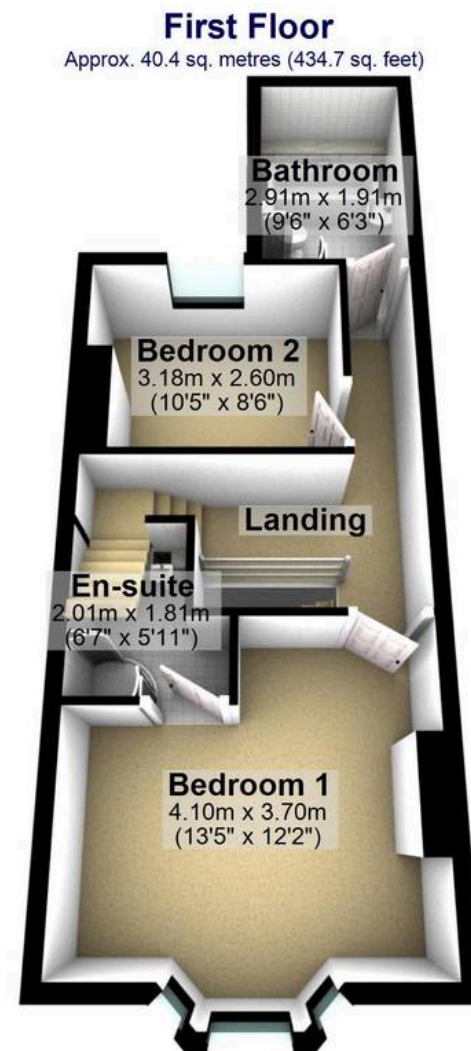
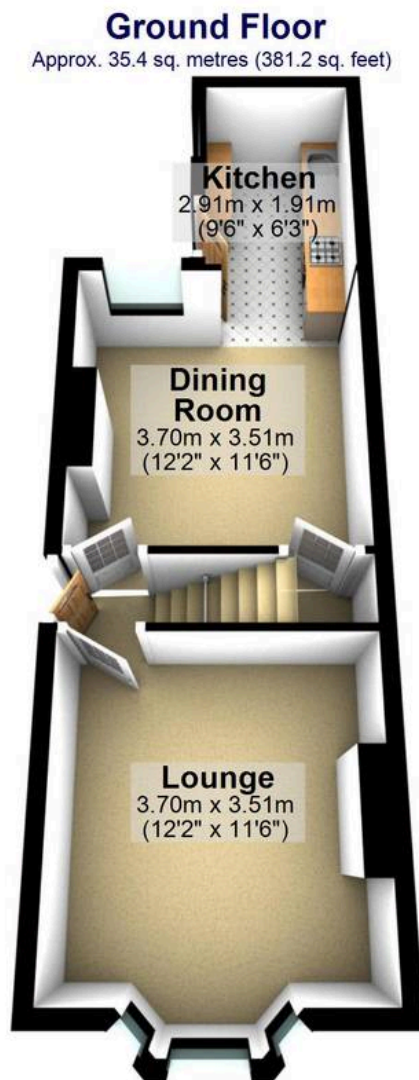
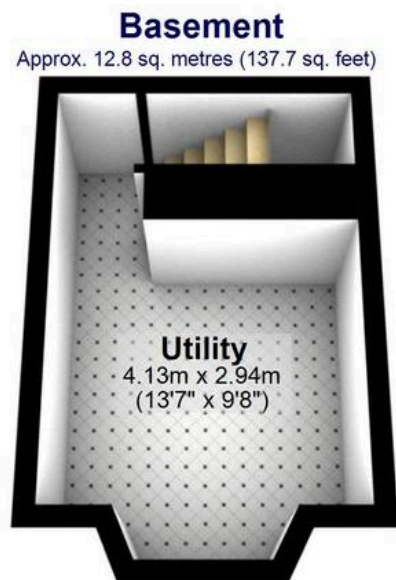
GUIDE PRICE £350,000-£365,000 A fabulous four double bedrooomed, double bayed, stone fronted, Victorian villa terraced property. With a double rear off shot, private rear garden and easy on road parking to the front. Finished internally to a super high standard, this property will be incredibly popular with the professional couple and young family alike. With numerous original period features, character and charm associated with a property from this era and effortlessly blending them with a cool, contemporary finish that really needs to be viewed to be fully appreciated. Located in the very heart of ultra popular Brincliffe on the south west of the city within a short stroll of both fashionable Sharrow Vale and village feel Nether Edge that both boast an array of independent cafes, eateries and shops, Chelsea park is round the corner, principal hospitals and universities are in easy reach and not forgetting The Peak Council Tax band: C

Tenure: Leasehold

- FABULOUS FOUR DOUBLE BEDROOM VILLA PERIOD TERRACED
- EXCELLENT SUBURB OF BRINCLIFFE ON THE SOUTH WEST OF THE CITY
- PERFECT FOR THE FAMILY OR PROFESSIONAL COUPLE
- OFSTED RATED EXCELLENT SCHOOLING CATCHMENTS
- SHORT STROLL TO FASHIONABLE SHARROW VALE AND NETHER EDGE WITH THEIR ARRAY OF INDEPENDENT CAFES EATERS AND SHOPS
- THREE IMPRESSIVE FLOORS OF ACCOMMODATION WITH A DOUBLE REAR OFF SHOT
- EASY ACCESS TO CHELSEA PARK PRINCIPAL HOSPITALS UNIVERSITIES AND THE PEAK DISTRICT







Total area: approx. 113.1 sq. metres (1217.6 sq. feet)

All measurements are approximate
Plan produced using PlanUp.