



WHITEHORNES

Buy. Sell. Let. Relax!

0114 268 8533
info@whitehorns.com
www.whitehorns.com

16 Elmham Road, Sheffield

Sheffield

Offers in Region of **£165,000**

16 Elmham Road

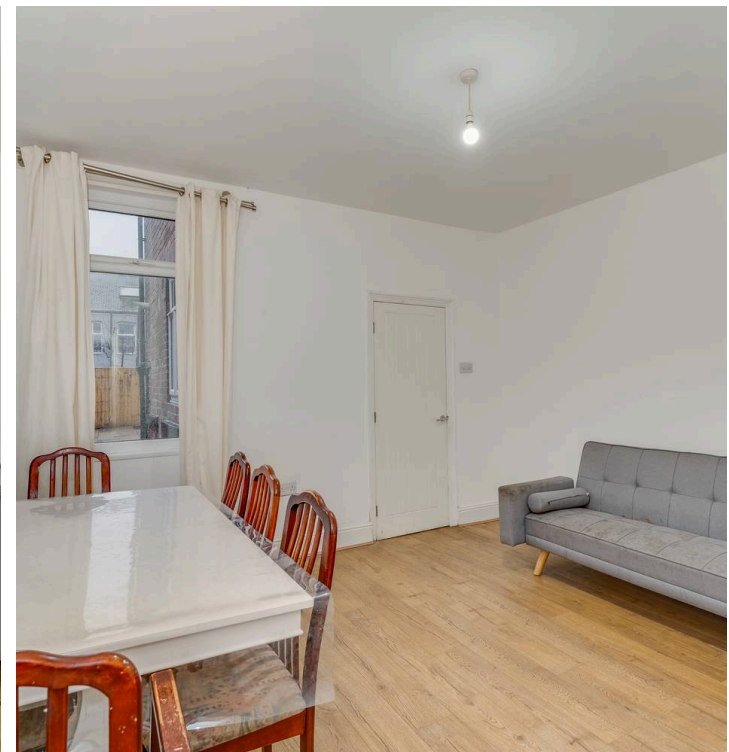
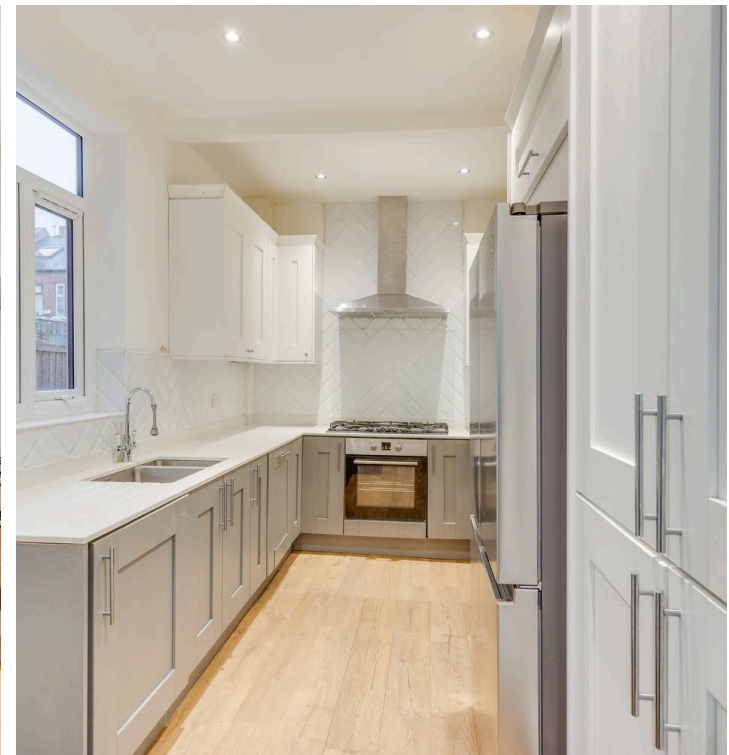
Sheffield, Sheffield

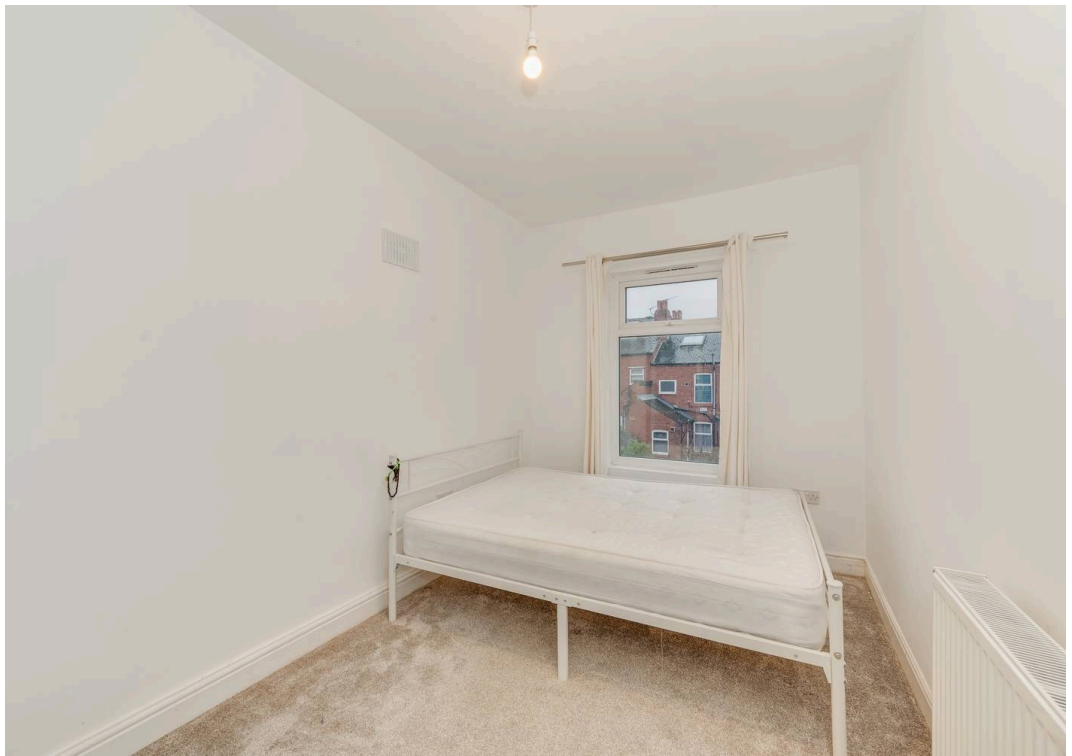
The property is a three-bedroom mid-terrace, ideally suited to the investor or first-time buyer. With an enclosed rear garden and ample living space, this superb family home provides a comfortable and convenient lifestyle. Tastefully presented throughout, this property boasts a freehold tenure and is offered with no chain, making it a highly desirable option for those seeking their perfect home.

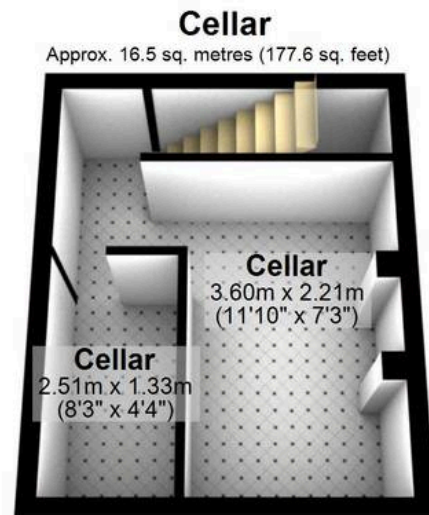
Council Tax band: A

Tenure: Freehold

- THREE BEDROOMED MID-TERRACE PROPERTY
- AVAILABLE WITH NO-ONWARD CHAIN
- IDEALLY SUITED TO THE INVESTOR/FIRST TIME BUYER
- REAR GARDEN
- SUPERB FAMILY HOME
- LOCAL AMENITIES
- TASTEFULLY PRESENTED THROUGHOUT
- VIEWINGS ADVISED
- NEWLY FITTED KITCHEN AND BATHROOM
- FREEHOLD PROPERTY, COUNCIL TAX BAND A AND EPC RATING E







Total area: approx. 109.8 sq. metres (1182.3 sq. feet)

All measurements are approximate
Plan produced using PlanUp.