

4 Springfield Glen, Millhouses

Sheffield

Guide Price £475,000 - £495,000

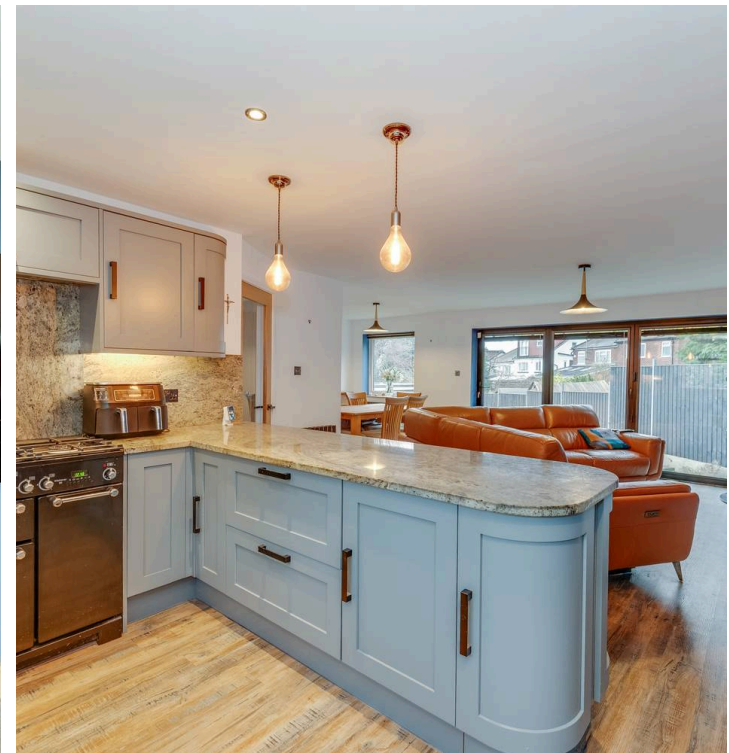
4 Springfield Glen

Millhouses, Sheffield

This stunning two double bedroom detached luxury bungalow is positioned in a quiet, tucked away cul-de-sac in the very heart of one of Sheffield's most sought after suburbs, towards the south west of the city. Finished internally to an exceptional standard with no expense spared by the current vendors, this property is a true testament to contemporary living. The spacious, open plan L-shaped kitchen, living and dining room is flooded with natural light, featuring bi-fold doors that open directly onto the private garden, as well as a stylish log burning stove, creating a warm and inviting ambience. Both bedrooms are generous doubles, and the interior design throughout is modern and elegant, making this home perfect for those looking to downsize or for families seeking a versatile space. There is excellent potential for further expansion (subject to the necessary planning consents)

Council Tax band: D Tenure: Freehold

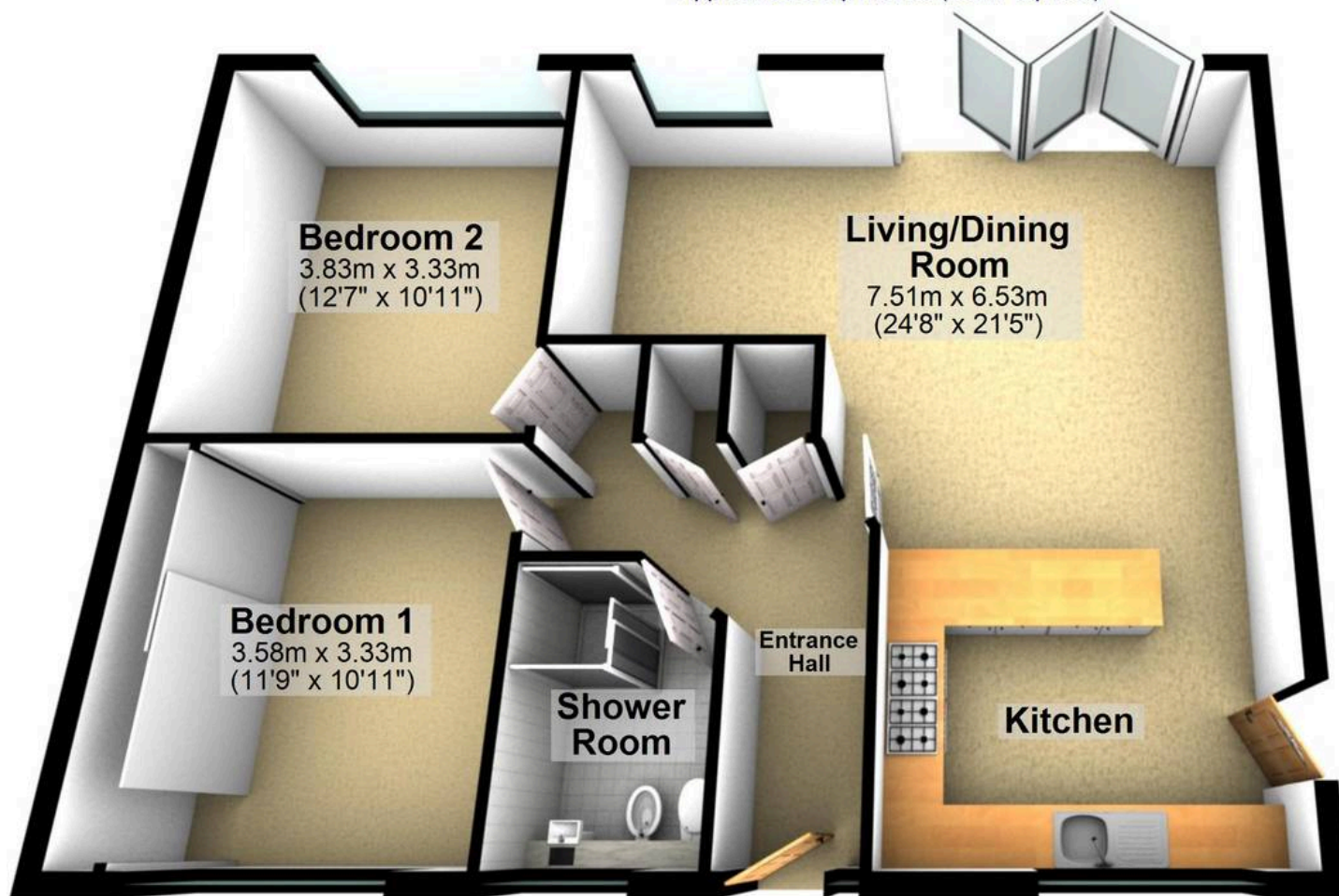
- STUNNING TWO DOUBLE BEDROOM DETACHED LUXURY BUNGALOW
- FINISHED INTERNALLY TO A SUPER HIGH STANDARD WITH NO EXPENSE SPARED BY THE CURRENT VENDORS
- INTERNAL VIEWING IS A PREREQUISITE TO FULLY APPRECIATE THE STYLE AND FINISH ON OFFER
- CONTEMPORARY OPEN PLAN L SHAPED KITCHEN LIVING DINING ROOM
- LOG BURNING STOVE AND BI-FOLD DOORS THAT GIVE DIRECT ACCESS TO THE PRIVATE SUNNY GARDEN
- PERFECT FOR THOSE LOOKING TO DOWNSIZE OR THE FAMILY MARKET WITH POTENTIAL IF REQUIRED TO EXPLORE A SIDE AND LOFT CONVERSION SUBJECT TO PLANNING





Ground Floor

Approx. 88.5 sq. metres (952.7 sq. feet)



Total area: approx. 88.5 sq. metres (952.7 sq. feet)

All measurements are approximate
Plan produced using PlanUp.

4 Springfield Glen