



WHITEHORNES

Buy. Sell. Let. Relax!

0114 268 8533
info@whitehorses.com
www.whitehorses.com

2 Humphrey Road, Sheffield

Sheffield

Offers in Region of **£240,000**

2 Humphrey Road

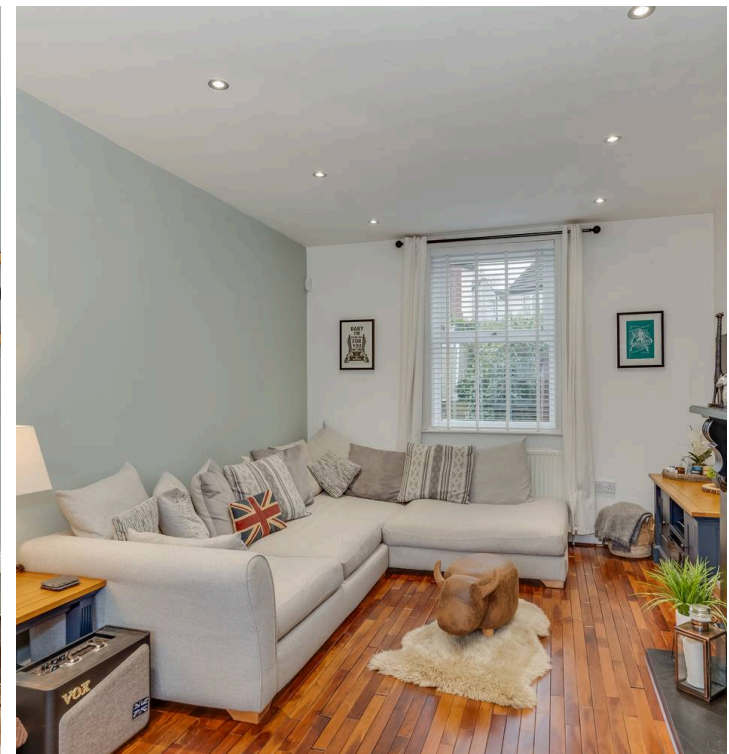
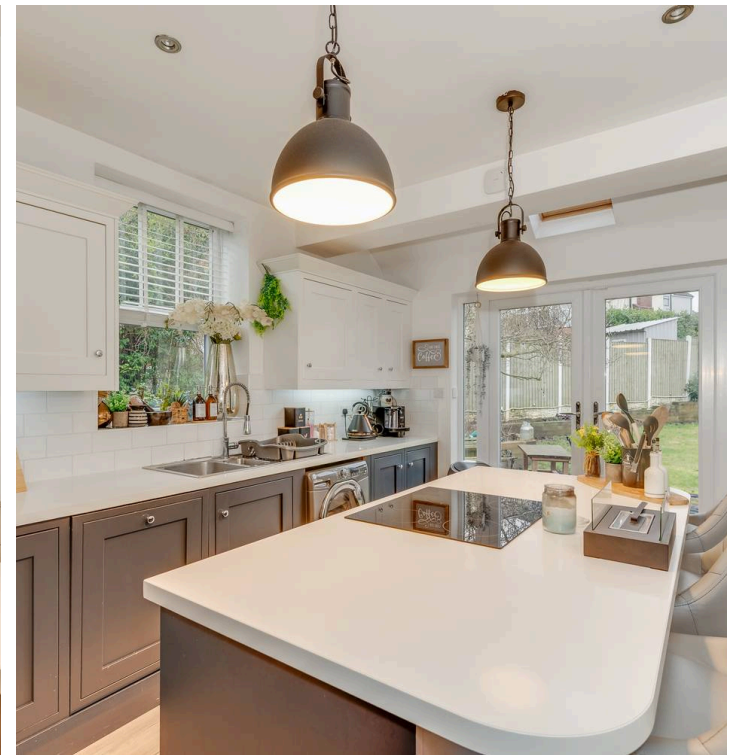
Sheffield, Sheffield

Situated in the heart of Greenhill, this beautifully presented two bedroom semi detached house offers a perfect blend of modern style and every-day convenience. The property features a spacious lounge, a contemporary kitchen with integrated appliances, and two well proportioned bedrooms, all finished to a high standard. The modern bathroom is complemented by stylish fittings, while ample storage is provided throughout. This freehold home is ideal for first time buyers and growing families alike, with reputable local schools within easy walking distance. Residents will also benefit from a wealth of nearby amenities, excellent public transport links, and close proximity to Graves Park for outdoor recreation. Outside, the property boasts a large, well enclosed garden, providing a safe and private space for children to play or for entertaining guests.

Council Tax band: A

Tenure: Freehold

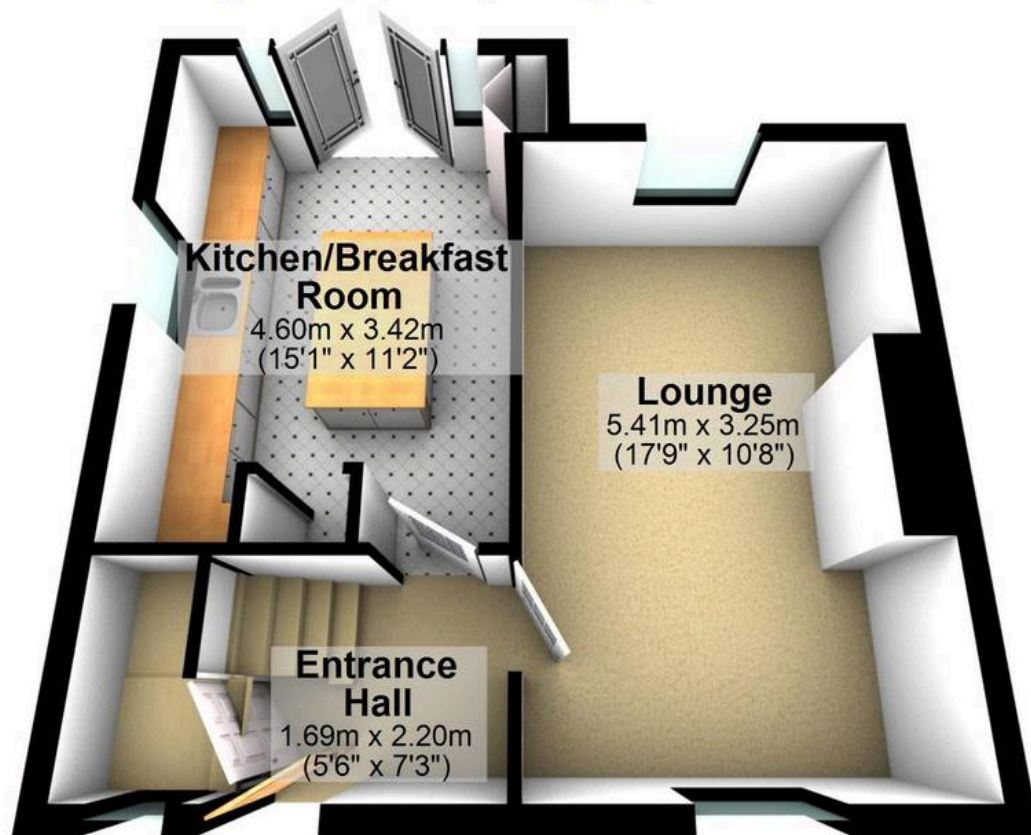
- GREAT TWO BEDROOMED SEMI-DETACHED FAMILY HOME
- FANTASTIC LOCATION IN THE HEART OF GREENHILL
- REPUTABLE LOCAL SCHOOLS WITHIN EASY WALKING DISTANCE
- CLOSE TO WEALTH OF LOCAL AMENITIES
- EXCELLENT PUBLIC TRANSPORT LINKS
- LARGE WELL ENCLOSED GARDEN
- CLOSE TO GRAVES PARK
- PERFECT FOR FIRST TIME BUYERS AND GROWING FAMILIES ALIKE
- FREEHOLD PROPERTY
- MODERN AND STYLISH FINISH THROUGHOUT





Ground Floor

Approx. 38.2 sq. metres (411.0 sq. feet)



First Floor

Approx. 34.9 sq. metres (375.1 sq. feet)



Total area: approx. 73.0 sq. metres (786.1 sq. feet)

All measurements are approximate
Plan produced using PlanUp.

2 Humphrey Road