



WHITEHORSES

Buy. Sell. Let. Relax!

0114 268 8533
info@whitehorses.com
www.whitehorses.com

15 Blossom Grove, Retford

Retford

Offers in Region of **£230,000**

15 Blossom Grove

Retford, Retford

This beautifully presented three-bedroom semi-detached family house is perfectly situated in a quiet and sought-after location, close to reputable local schools and a wealth of amenities. The property boasts a modern and stylish finish throughout, making it ideal for first-time buyers and families alike. The spacious living accommodation includes a welcoming entrance hall, a bright and airy lounge, and a contemporary kitchen diner with ample storage. Upstairs, there are three well-proportioned bedrooms, the master boasts a beautiful en-suite and a sleek family bathroom. With the added benefit of a downstairs w/c. With fantastic transport links nearby, commuting is both easy and convenient. Off-road parking is provided to the front of the property for added practicality. Outside to the rear is an enclosed family friendly garden ideal for children and pets.

Council Tax band: B

Tenure: Freehold

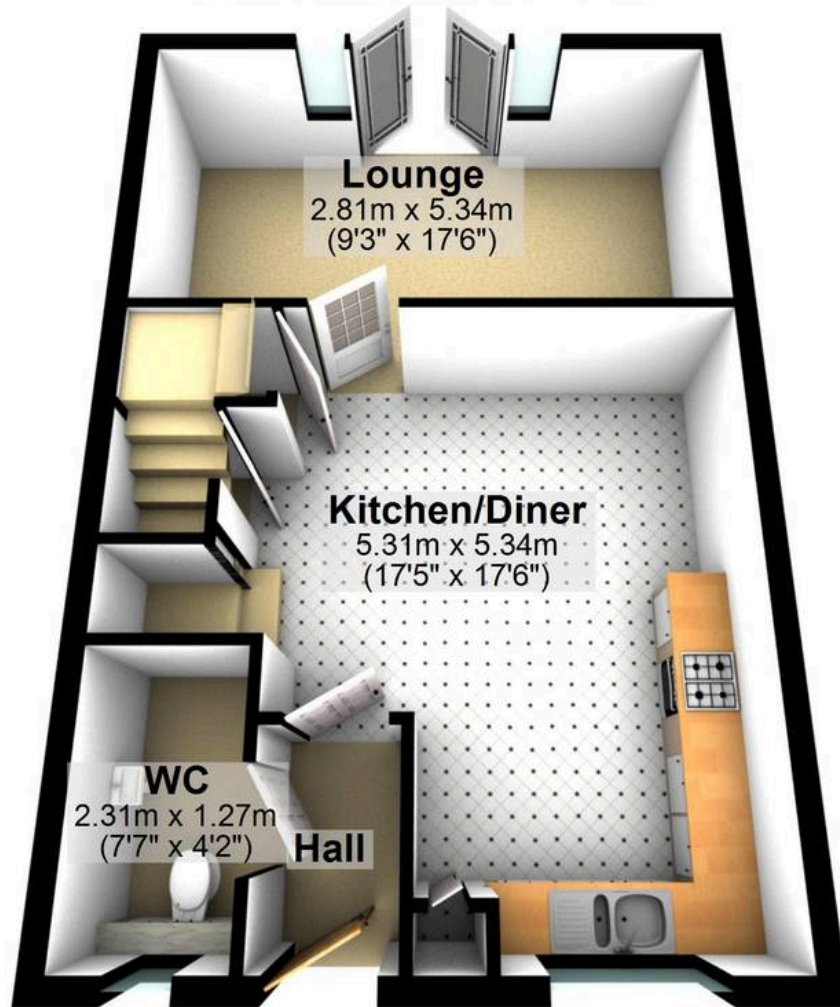
- THREE BEDROOMED SEMI-DETACHED FAMILY HOUSE
- GREAT QUIET LOCATION
- CLOSE TO REPUTABLE LOCAL SCHOOLS
- MODERN STYLISH FINISH THROUGHOUT
- PERFECT FOR FIRST TIME BUYERS AND FAMILIES ALIKE
- WELL ENCLOSED PRIVATE GARDEN
- OFF ROAD PARKING
- FANTASTIC TRANSPORT LINKS
- WEALTH OF NEARBY LOCAL AMENITIES
- FREEHOLD PROPERTY, COUNCIL TAX BAND A AND EPC RATING B





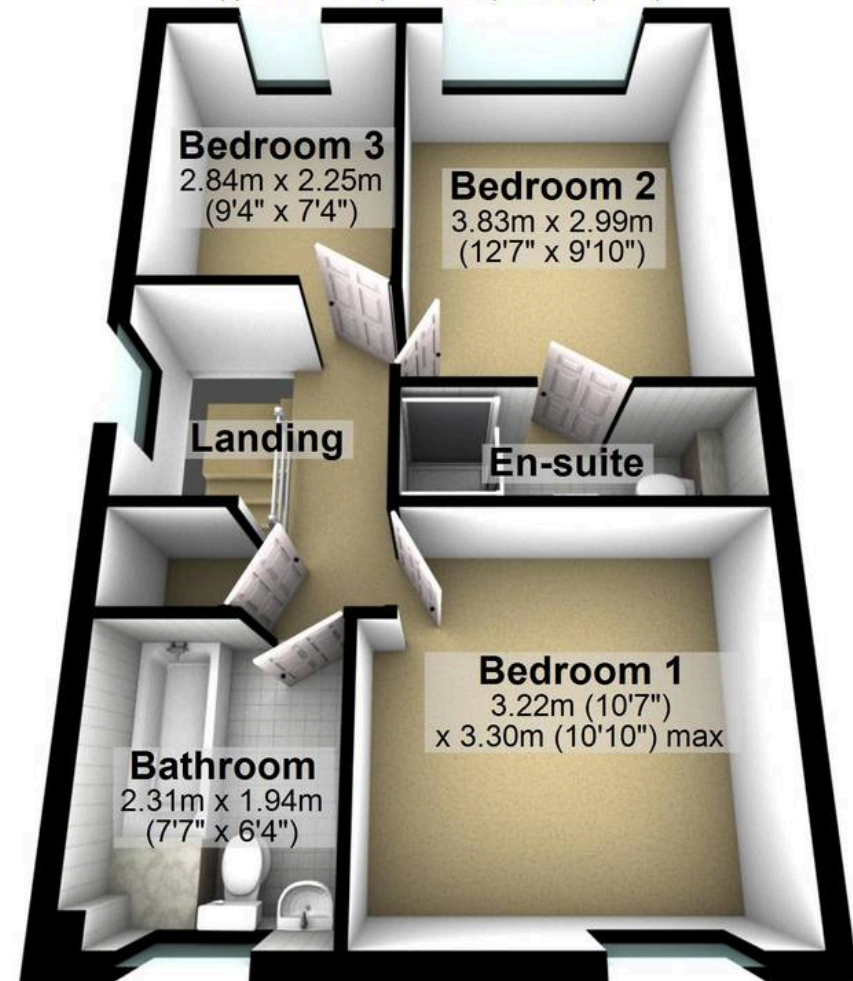
Ground Floor

Approx. 43.8 sq. metres (471.9 sq. feet)



First Floor

Approx. 43.8 sq. metres (471.6 sq. feet)



Total area: approx. 87.7 sq. metres (943.5 sq. feet)

All measurements are approximate
Plan produced using PlanUp.

15 BLOSSOM GROVE