



WHITEHORNS

Buy. Sell. Let. Relax!

0114 268 8533
info@whitehorns.com
www.whitehorns.com



Apt 9, Westbourne Manor, 17-21 Westbourne Road Guide Price £265,000-£275,000

Sheffield

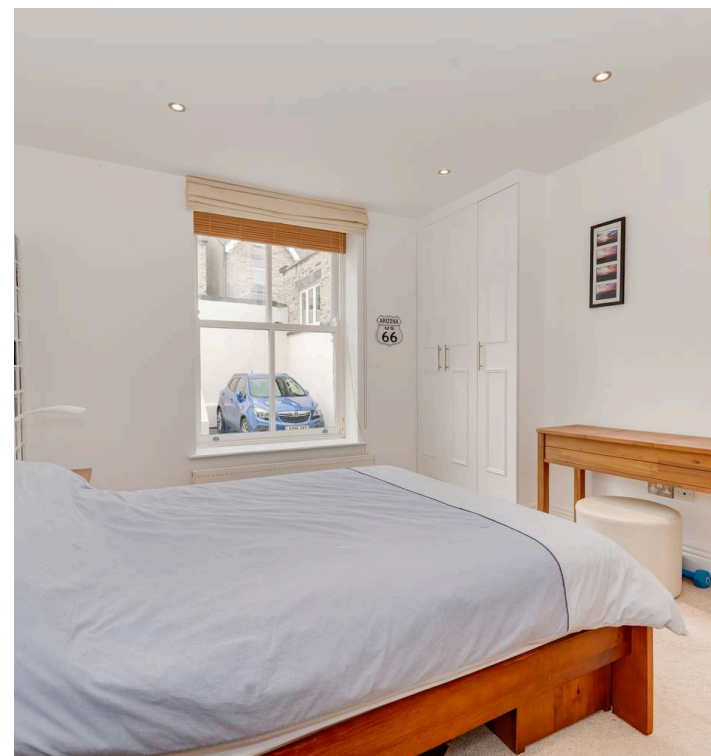
Apartment 9

Westbourne Manor, Sheffield

An exceptionally rare opportunity has arisen to purchase this stunning, immaculately presented and very deceptive, two double bedroomed, two bath/shower roomed, luxury ground floor apartment. Forming part of this exclusive development and offering a unique internal layout the apartment has been converted from this fabulous Victorian, stone built manor house. Retaining the original features, character and charm associated with a property from this era and blending them in a sympathetic way to create this modern feel that is flooded with a feeling of light and space throughout the apartment. Quietly tucked away and shielded from the day to day hustle and bustle and accessed via a private electric gated driveway the property enjoys some stunning views over the landscaped gardens that are best enjoyed from the bay windowed living room.

Council Tax band: C Tenure: Leasehold

- STUNNING TWO DOUBLE BEDROOM TWO BATHROOM GROUND FLOOR APARTMENT
- FORMING PART OF THIS EXCLUSIVE STONE BUILT VICTORIAN DETACHED CONVERSION
- SECURE GATED ACCESS TO COMMUNAL CAR PARK WITH ALLOCATED PARKING BAY
- INCREDIBLY LIGHT AND SPACIOUS FEEL THROUGHOUT WITH A SUPER SIZED OPEN PLAN LIVING DINING FITTED KITCHEN
- PERFECT FOR THE PROFESSIONAL COUPLE OR THOSE LOOKING TO DOWNSIZE IN STYLE
- ORIGINAL PERIOD FEATURES CHARACTER AND CHARM ASSOCIATED WITH A PROPERTY FROM THIS ERA BLENDED WITH A CONTEMPORARY FINISH
- HEART OF ULTRA POPULAR BROOMHILL SET BACK FROM THE HUSTLE AND BUSTLE IN A PRIVATE SETTING







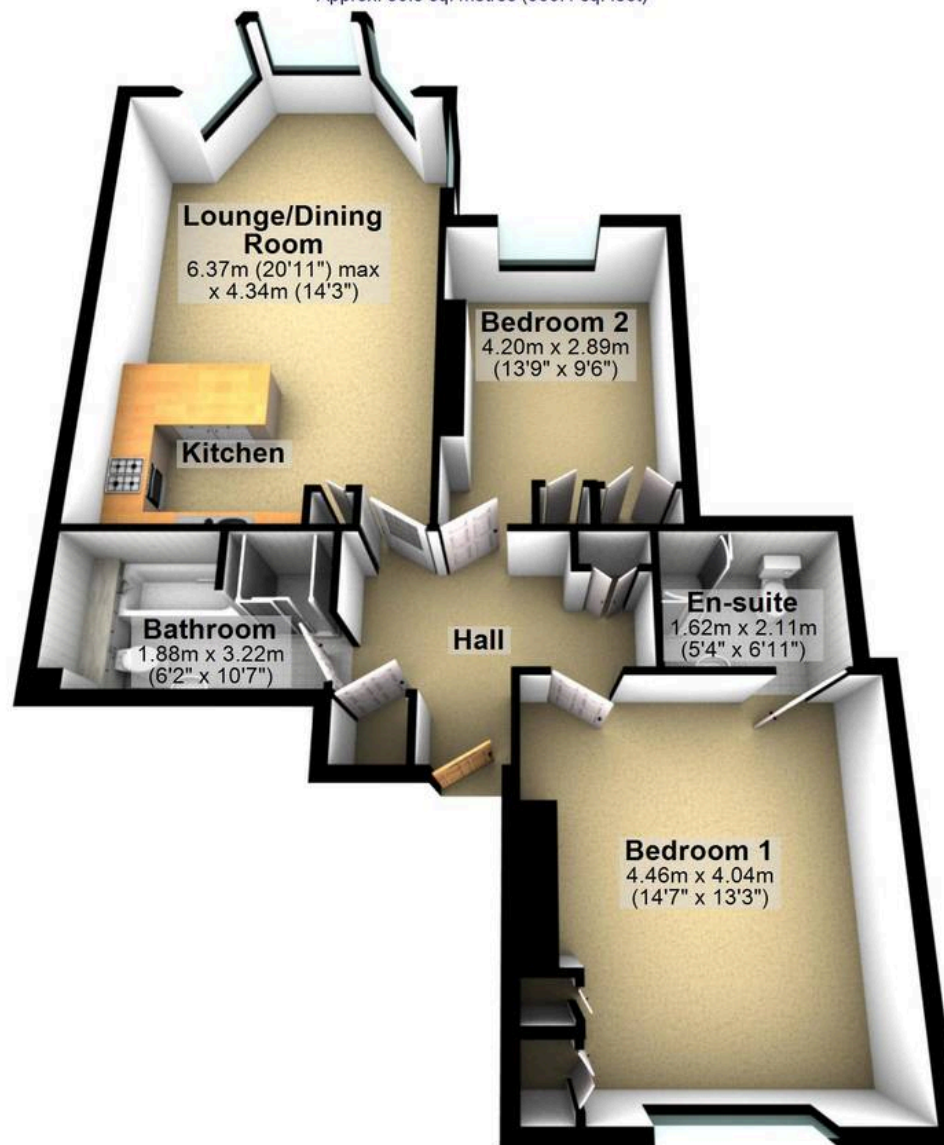
WHITEHORNES

Buy. Sell. Let. Relax!

0114 268 8533
info@whitehorses.com
www.whitehorses.com

Ground Floor

Approx. 80.5 sq. metres (866.4 sq. feet)



Total area: approx. 80.5 sq. metres (866.4 sq. feet)

All measurements are approximate
Plan produced using PlanUp.