



WHITEHORSES

Buy. Sell. Let. Relax!

0114 268 8533
info@whitehorses.com
www.whitehorses.com

31 Jordanthorpe Green, Jordanthorpe

Sheffield

Offers in Region of **£215,000**

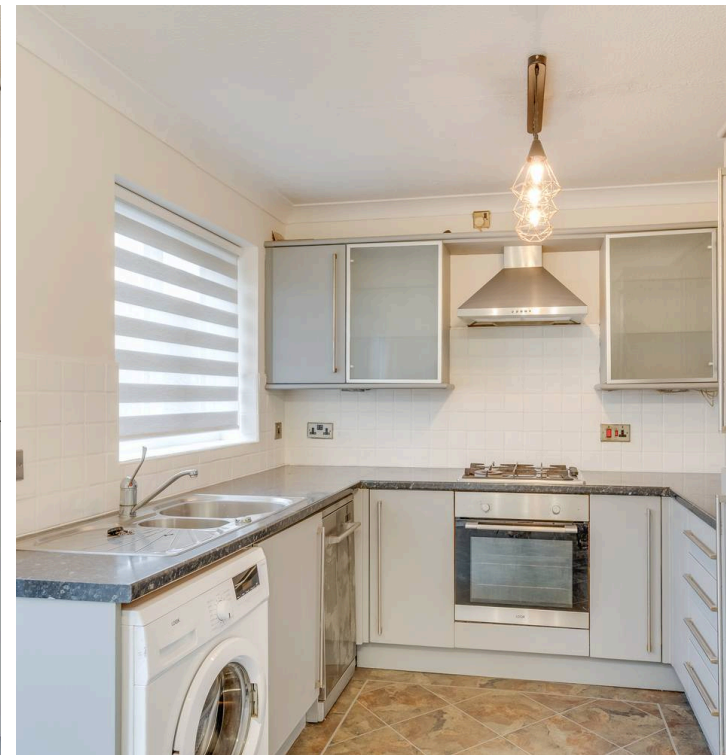
31 Jordanthorpe Green

Jordanthorpe, Sheffield

Offered for sale with no onward chain is this fantastic three bedroomed linked detached house situated on this modern development. The property has been attractively decorated and would suit a couple or a family and has a good size lounge and dining kitchen downstairs and three bedrooms and the bathroom upstairs. Outside are generously sized gardens to the rear and a further side garden which offers the potential to extend the property with the necessary planning consents. The area offers good local shops, while more comprehensive facilities can be found at nearby Meadowhead and Woodseats. VIEWING RECOMMENDED.

Council Tax band: C

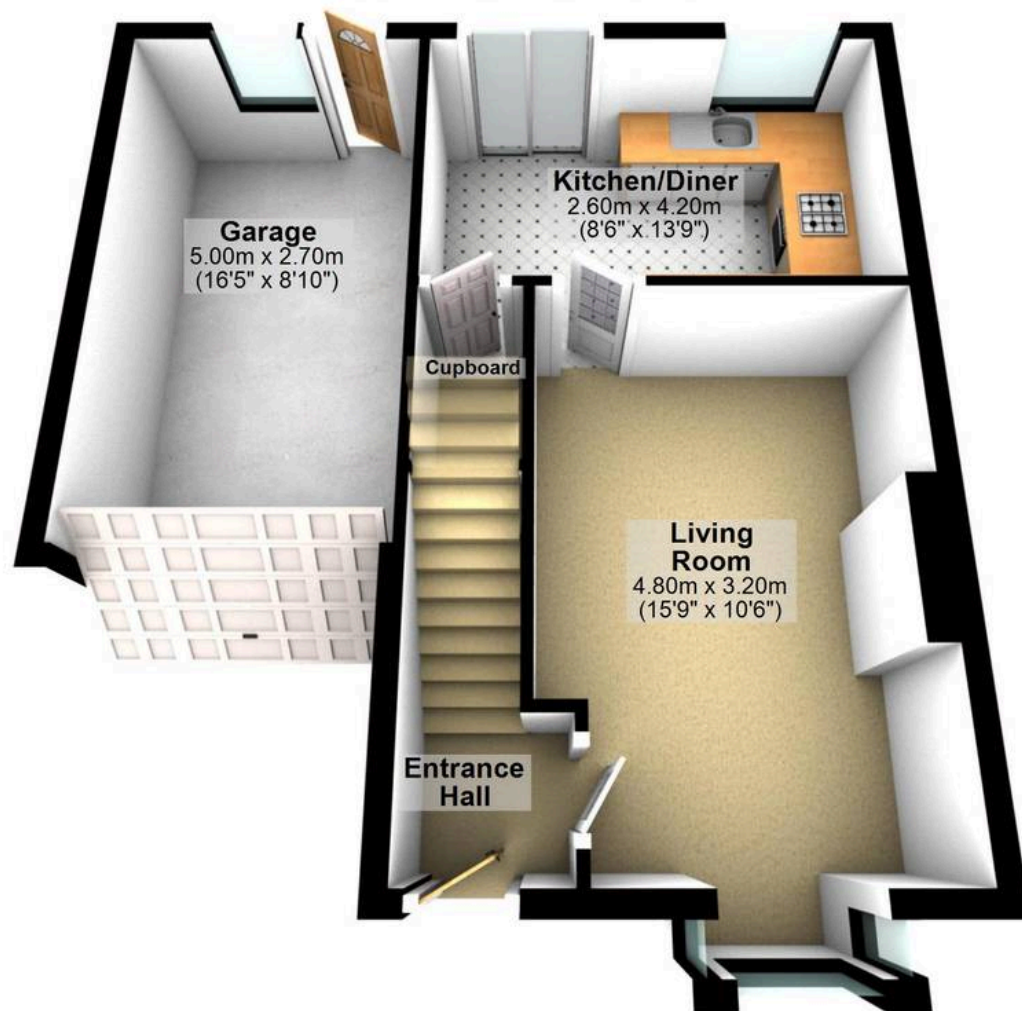
- THREE BEDROOMED DETACHED FAMILY HOME
- SOLD WITH NO ONWARD CHAIN
- PERFECT FOR FAMILIES AND FIRST TIME BUYERS ALIKE
- CLOSE TO A WEALTH OF LOCAL AMENITIES
- RECENTLY RENOVATED
- MODERN AND STYLISH FINISH
- OFF ROAD PARKING
- PRIVATE GARDENS
- GREAT TRANSPORT LINKS
- REPUTABLE LOCAL SCHOOLS





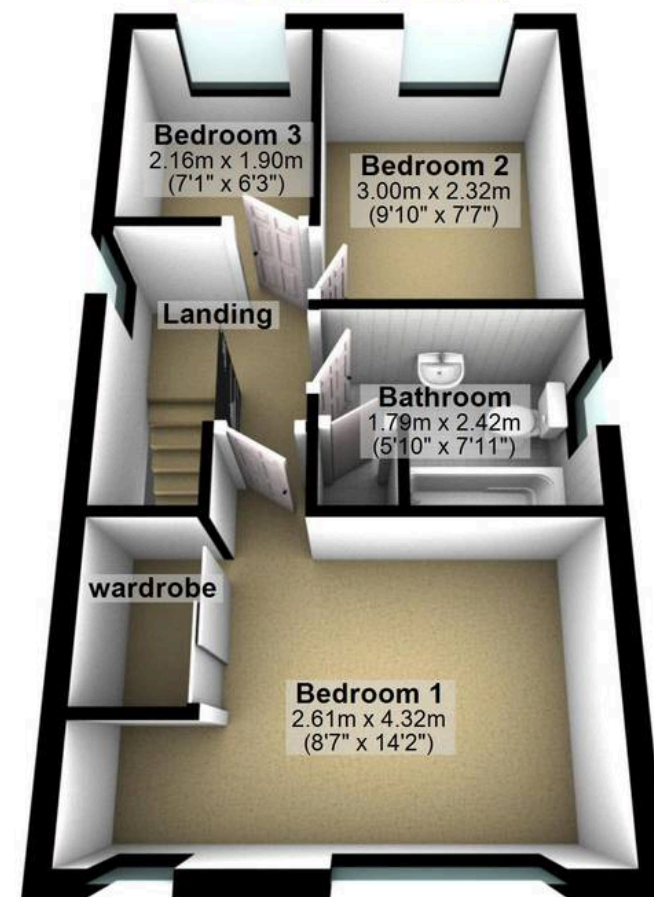
Ground Floor

Approx. 45.8 sq. metres (493.4 sq. feet)



First Floor

Approx. 32.4 sq. metres (348.6 sq. feet)



Total area: approx. 78.2 sq. metres (842.0 sq. feet)

All measurements are approximate
Plan produced using PlanUp.