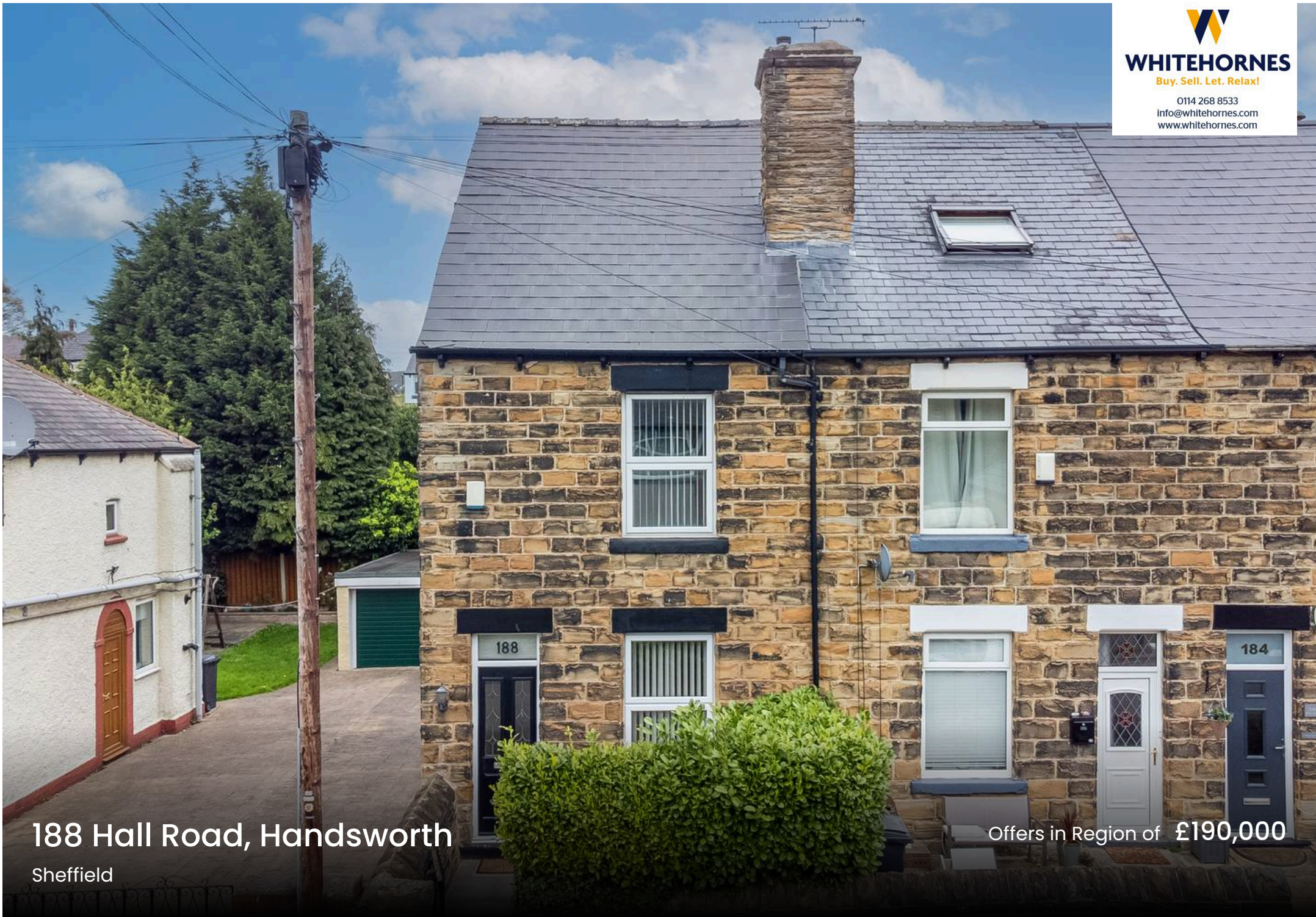




WHITEHORSES

Buy. Sell. Let. Relax!

0114 268 8533
info@whitehorses.com
www.whitehorses.com



188 Hall Road, Handsworth

Sheffield

Offers in Region of **£190,000**

188 Hall Road

Handsworth, Sheffield

This well presented three bedroom end of terrace property is offered to the market with no onward chain, providing an ideal opportunity for first time buyers or growing families. The home is situated in a highly convenient location, close to the Sheffield ring road and with easy motorway access, making commuting straightforward. The property is also near reputable local schools, a variety of shops, cafes, and pubs, as well as excellent public transport links. Inside, the house is finished to a high standard throughout, offering a comfortable and contemporary living environment. The accommodation comprises a spacious lounge, a modern kitchen with ample storage, three well proportioned bedrooms, and a stylish family bathroom. Ample on street parking is available for residents and visitors alike (permit may be required depending on local regulations). The property is designed to meet the needs of modern family life, with thoughtful touches and quality fixtures throughout. This is a fantastic opportunity to acquire a move-in ready home in a popular and well connected area, offering both comfort and convenience for every-day living. Early viewing is highly recommended to appreciate the accommodation on offer.

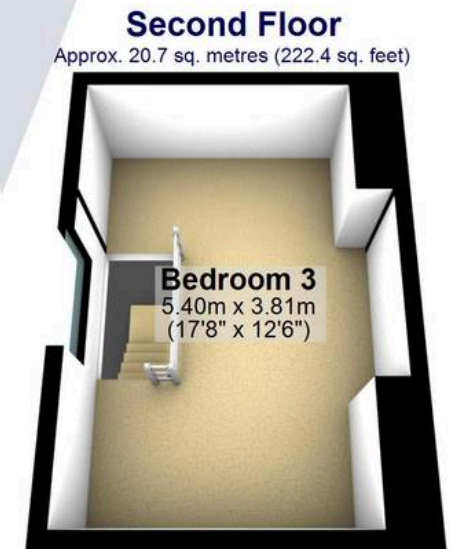
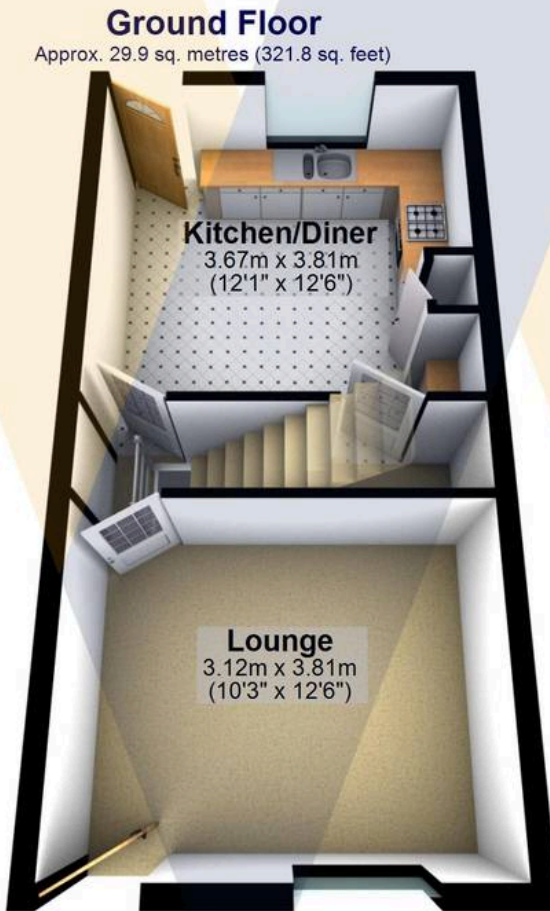
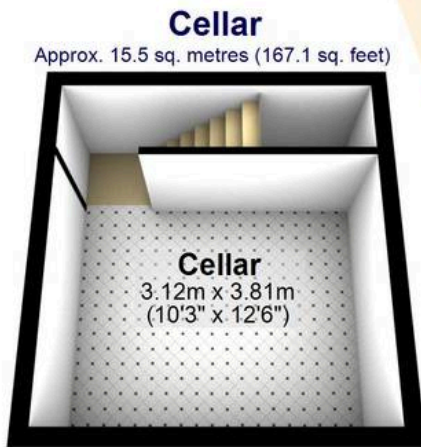
Council Tax band: A

Tenure: Leasehold

- THREE BEDROOMED END OF TERRACED PROPERTY
- AVAILABLE WITH NO ONWARD CHAIN
- AMPLE ON STREET PARKING
- CLOSE TO SHEFFIELD RING ROAD AND MOTORWAY ACCESS
- PERFECT FOR FIRST TIME BUYERS AND GROWING







Total area: approx. 96.0 sq. metres (1033.2 sq. feet)

All measurements are approximate
Plan produced using PlanUp.

188 Hall Road