



WHITEHORSES

Buy. Sell. Let. Relax!

0114 268 8533
info@whitehorses.com
www.whitehorses.com



10 Leighton Road, Sheffield

Sheffield

Offers in Region of **£160,000**

10 Leighton Road

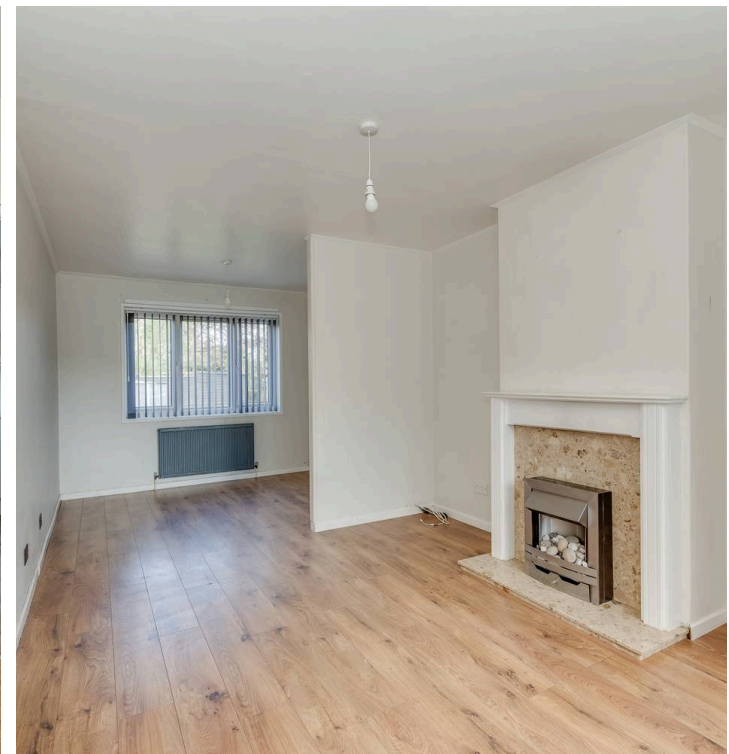
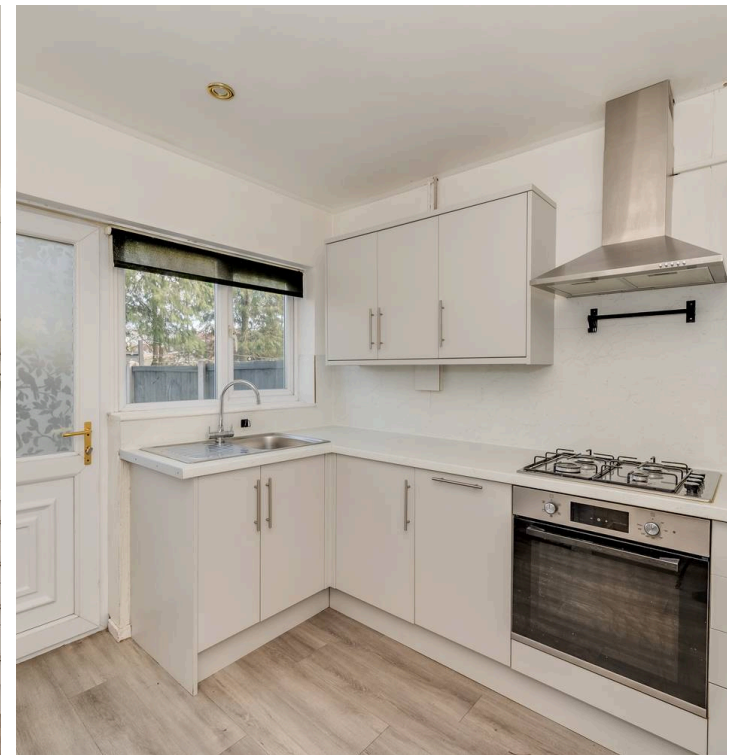
Sheffield, Sheffield

This beautifully presented three-bedroom mid-terraced house is perfect for growing families and first-time buyers alike. Offering a great finish throughout, the property features a spacious living area, a modern kitchen, and well-proportioned bedrooms. The home is available with no onward chain, allowing for a straightforward purchase process. Situated close to the Supertram network, this property provides easy access to Sheffield city centre and surrounding areas. Residents will also benefit from proximity to a wealth of local amenities and reputable schools, making this a highly desirable location for families. The property is offered as a freehold, providing long-term security and peace of mind. Outside is a large private garden and to the front are low maintenance front gardens and ample on street parking.

Council Tax band: A

Tenure: Freehold

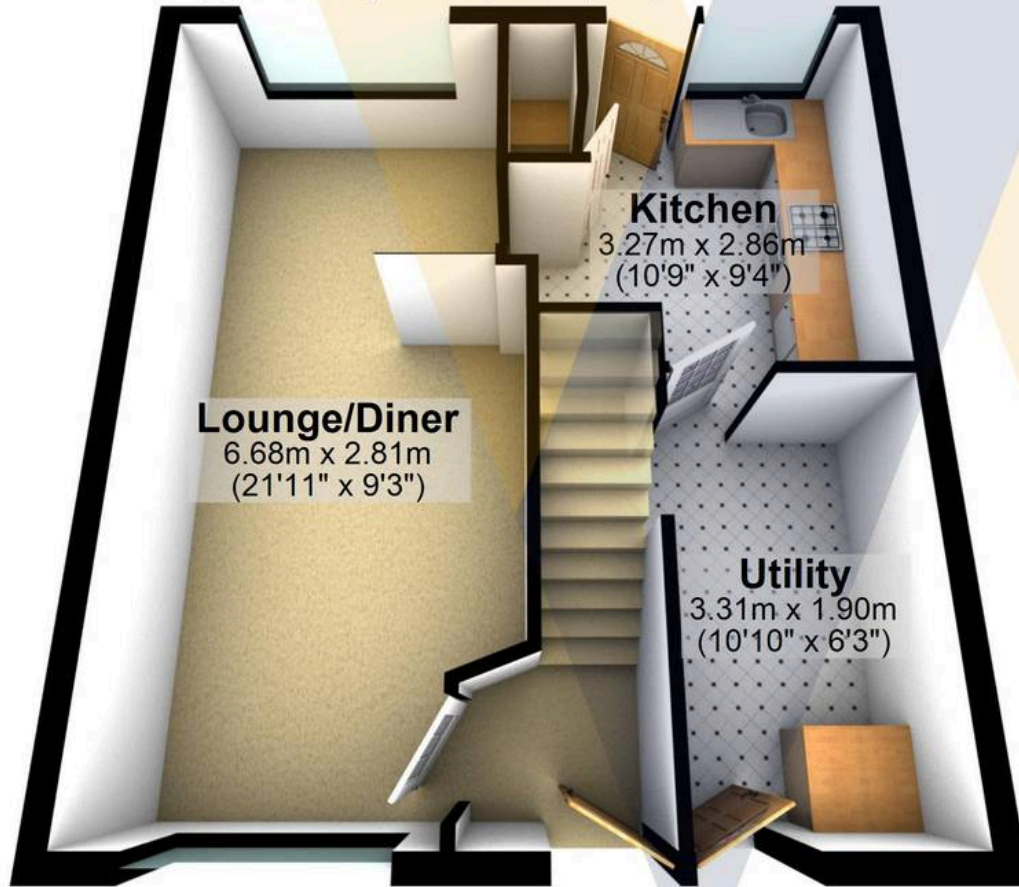
- THREE BEDROOMED MID-TERRACED PROPERTY
- GREAT FINISH THROUGHOUT
- AVAILABLE WITH NO ONWARD CHAIN
- PRIVATE GARDENS
- CLOSE TO THE SUPERTRAM NETWORK
- PERFECT FOR GROWING FAMILIES AND FIRST TIME BUYERS
- AMPLE ON STREET PARKING
- CLOSE TO A WEALTH OF LOCAL AMENITIES
- REPUTABLE LOCAL SCHOOLS
- FREEHOLD PROPERTY





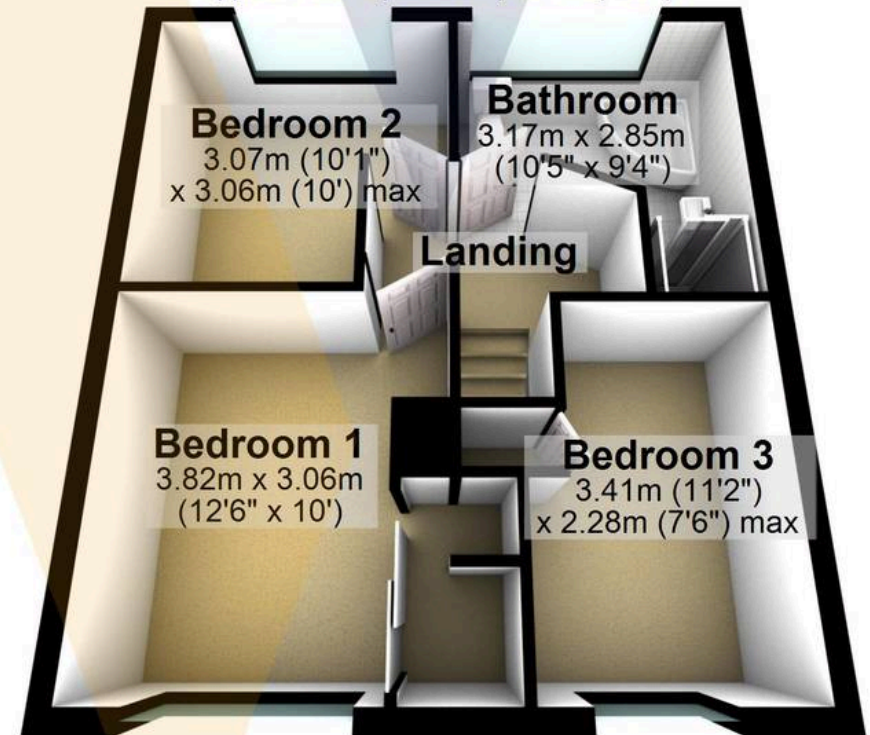
Ground Floor

Approx. 40.1 sq. metres (431.9 sq. feet)



First Floor

Approx. 40.1 sq. metres (431.9 sq. feet)



Total area: approx. 80.3 sq. metres (863.9 sq. feet)

All measurements are approximate
Plan produced using PlanUp.

10 Leighton Road