



WHITEHORSES

Buy. Sell. Let. Relax!

0114 268 8533
info@whitehorses.com
www.whitehorses.com



1 Lawns Wood Gardens, Thrybergh

Rotherham

Offers in Region of **£715,000**

1 Lawns Wood Gardens

Thrybergh, Rotherham

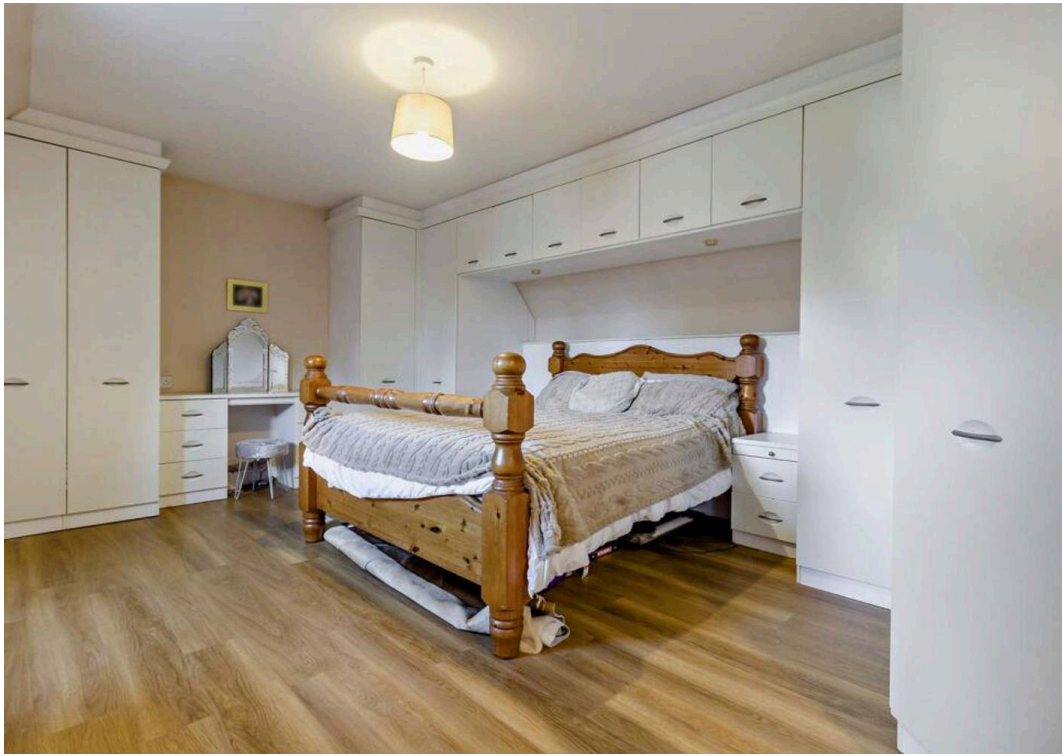
This truly stunning five bedroom detached house is situated in the heart of an exclusive development comprising only four homes. Offering two floors of impressive accommodation totalling approximately 3,026 sq ft, the property provides spacious and modern living throughout. The light and bright kitchen is perfect for family life, complemented by two generous reception rooms and a dedicated bar or games room, making it ideal for entertaining and relaxation. The home is conveniently located with Thrybergh Country Park and Rotherham Golf Club right on your doorstep, as well as excellent transport links including Rotherham Central Station and major road networks. Families will appreciate the proximity to well-regarded local schools, including Thrybergh Academy. The property is presented as a freehold, with an EPC rating of C and council tax band G. Outside are expansive gardens that offer privacy and space perfect for entertaining. There is ample off road parking for multiple vehicles as well as a detached garage.

Council Tax band: G

Tenure: Freehold

- TRULY STUNNING FIVE BEDROOMED DETACHED HOUSE WITH VIEWING ESSENTIAL DO FULL JUSTICE
- HEART OF THIS EXCLUSIVE DEVELOPMENT WITH ONLY 4 HOMES
- TWO FLOORS OF ACCOMMODATION TOTALLING AN IMPRESSIVE 3.026 SQ FT OF MODERN AND SPACIOUS LIVING
- BEAUTIFUL, LARGE SUNNY LANDSCAPED GARDEN WITH FANTASTIC PATIO AREA PERFECT FOR ENTERTAINING
- THRYBERGH COUNTRY PARK AND ROTHERHAM GOLF







Total area: approx. 281.2 sq. metres (3026.4 sq. feet)

All measurements are approximate
Plan produced using PlanUp.

1 Lawns Wood Garden