



WHITEHORNS

Buy. Sell. Let. Relax!

0114 268 8533
info@whitehorns.com
www.whitehorns.com

112 Manor Park Crescent, Sheffield

Sheffield

Offers in Region of £220,000

112 Manor Park Crescent

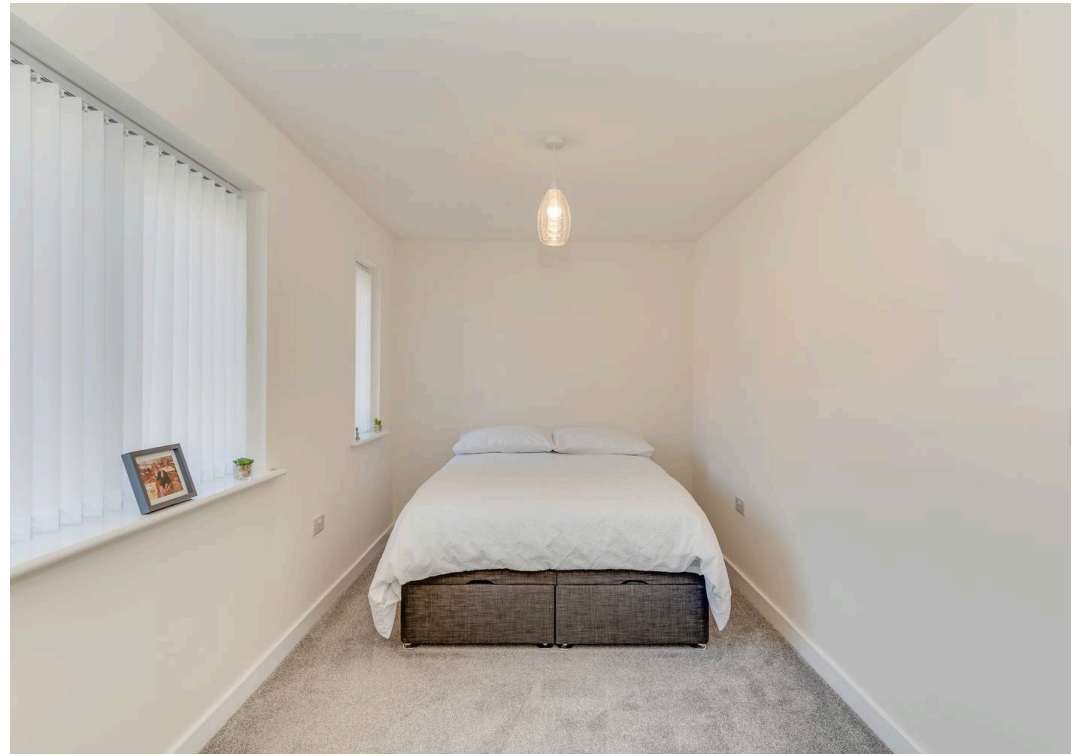
Sheffield, Sheffield

This beautifully presented two bedroom mid-terraced property offers a modern and stylish finish throughout, making it the perfect home for first time buyers and families alike. The spacious living area features custom built-in storage, providing ample space to keep the home organized and clutter-free. The contemporary kitchen is well-appointed and leads to a convenient downstairs WC. Upstairs, you will find two very large double bedrooms, each offering generous proportions and plenty of natural light. The property benefits from off-road parking and is ideally located close to Sheffield city centre, with a wealth of local amenities within easy walking distance. Outside is a pleasant well enclosed family friendly garden and to the front is off road parking. Council Tax band: A

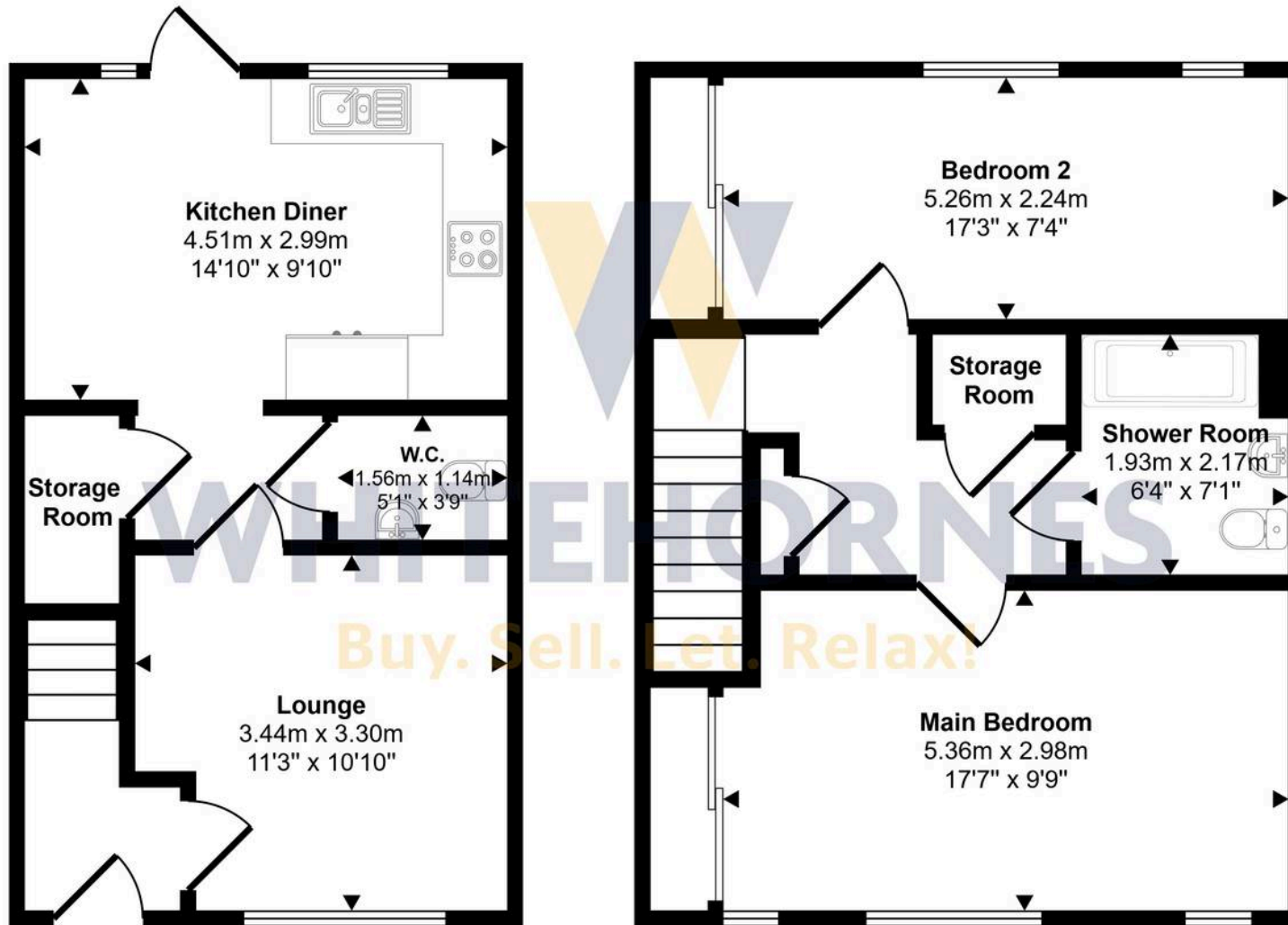
Tenure: Freehold

- TWO BEDROOMED MID-TERRACED PROPERTY
- MODERN AND STYLISH FINISH THROUGHOUT
- CUSTOM BUILT IN STORAGE
- PRIVATE REAR GARDEN AND OFF ROAD PARKING
- PERFECT FOR FIRST TIME BUYERS AND FAMILIES ALIKE
- TWO VERY LARGE DOUBLE BEDROOMS
- DOWNSTAIRS WC
- CLOSE TO SHEFFIELD CITY CENTRE
- WEALTH OF LOCAL AMENITIES WITHIN EASY WALKING DISTANCE
- FREEHOLD PROPERTY COUNCIL TAX BAND A AND EPC RATING B





Approx Gross Internal Area
81 sq m / 871 sq ft



Ground Floor

Approx 35 sq m / 373 sq ft

First Floor

Approx 46 sq m / 498 sq ft

This floorplan is only for illustrative purposes and is not to scale. Measurements of rooms, doors, windows, and any items are approximate and no responsibility is taken for any error, omission or mis-statement. Icons of items such as bathroom suites are representations only and may not look like the real items. Made with Made Snappy 360.