



WHITEHORNES

Buy. Sell. Let. Relax!

0114 268 8533
info@whitehorns.com
www.whitehorns.com

800 Ecclesall Road, Ecclesall

Sheffield

Guide Price £285,000 - £295,000

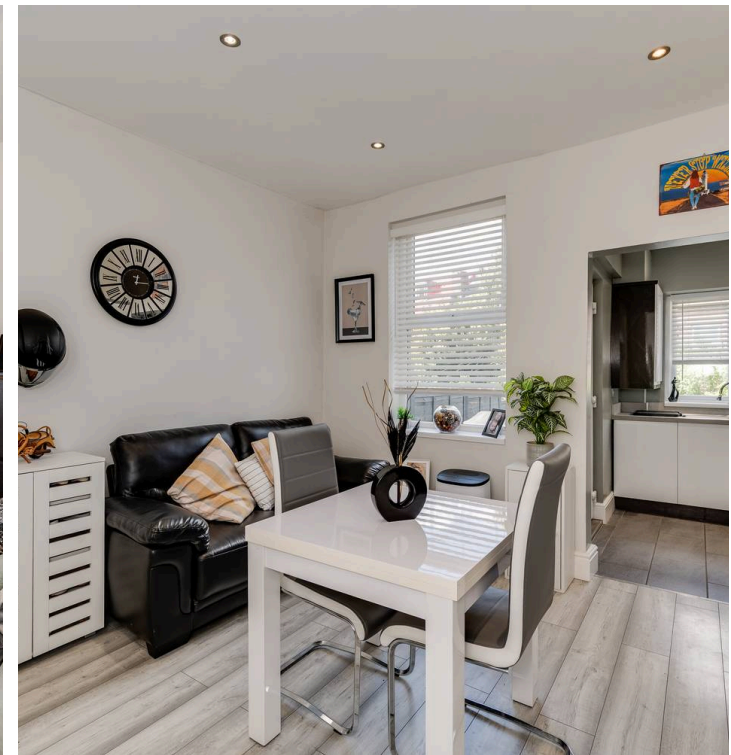
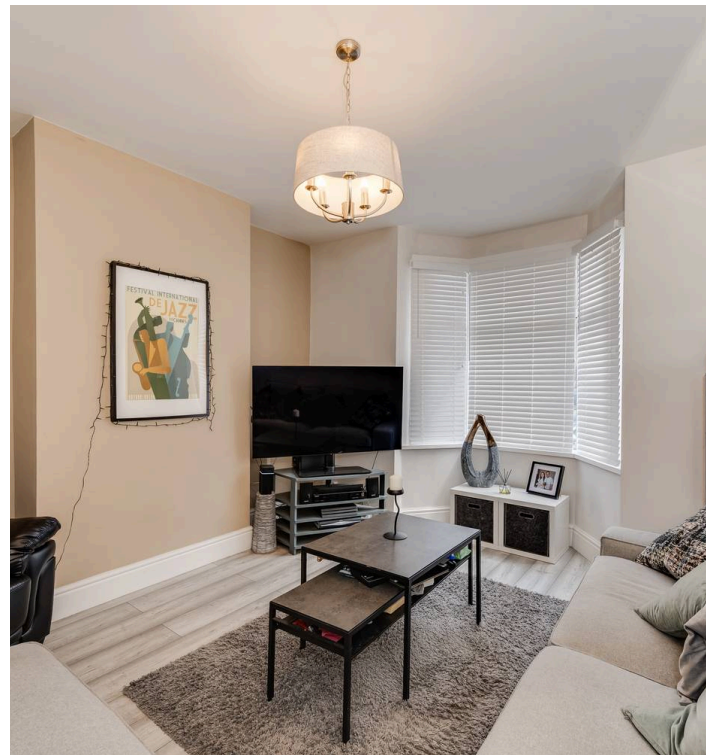
800 Ecclesall Road

Ecclesall, Sheffield

This stunning three double bedroom, two bathroom Victorian terraced home is finished internally to the highest of standards, with no expense spared throughout. Arranged over three beautifully appointed floors and offering an impressive 1,144 square feet of living space, the property perfectly blends period charm with contemporary design. The ground floor features a spacious bay-fronted lounge, and a separate dining room that leads through to a stylish rear off-shot kitchen, complete with high-end appliances and bespoke cabinetry. Upstairs, there are three generously sized double bedrooms, each with ample storage, and two luxurious bathrooms (including a principal en suite with walk-in shower).

Council Tax band: B Tenure: Freehold

- STUNNING THREE DOUBLE BEDROOM TWO BATHROOM VICTORIA7TERRACE HOME
- FINISHED INTERNALLY TO THE VERY HIGHEST OF STANDARDS WITH NO EXPENSE SPARED
- REAR OFF SHOT KITCHEN AND PRIVATE REAR SUNNY GARDEN WITH NO THROUGH FARE FROM NEIGHBOURING PROPERTIES
- THREE STUNNING FLOORS OF ACCOMMODATION THAT TOTAL AN IMPRESSIVE 1,144 SQ FEET
- OFSTED RATED EXCELLENT SCHOOLING CATCHMENTS INCLUDING GREYSTONES JUNIORS AND HIGH STORRS SECONDARY
- ENDCLIFFE PARK LITERALLY A FEW SHORT STRIDES DOWN THE ROAD
- EASY ACCESS TO PRINCIPAL HOSPITALS AND UNIVERSITIES ALONG WITH EXCELLENT PUBLIC TRANSPORT LINKS AND CENTRAL SHEFFIELD
- PITCH PERFECT FOR THE PROFESSIONAL COUPLE FIRST TIME BUYER OR YOUNG FAMILY LIKE







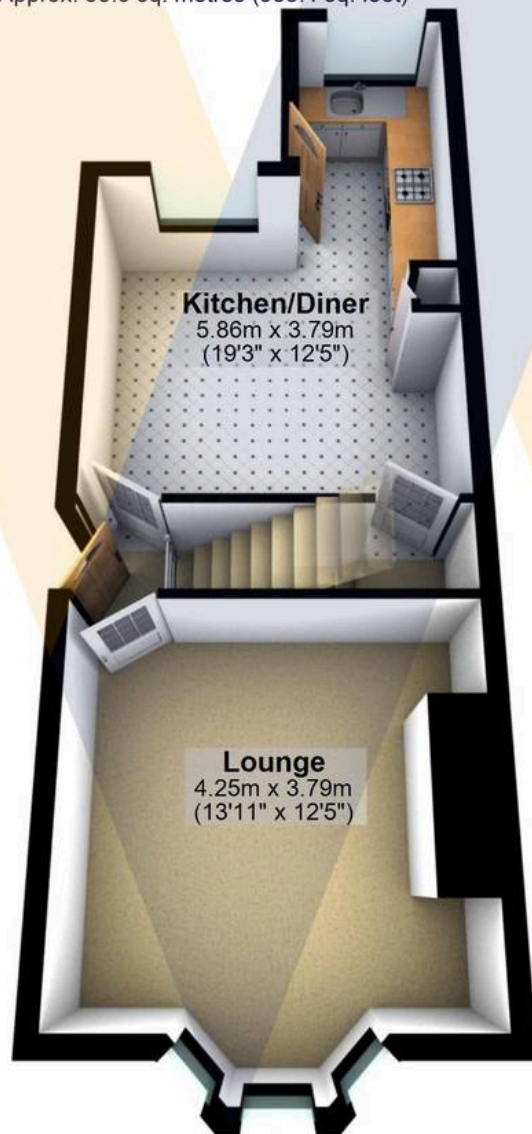
WHITEHORNES

Buy. Sell. Let. Relax!

0114 268 8533
info@whitehorses.com
www.whitehorses.com

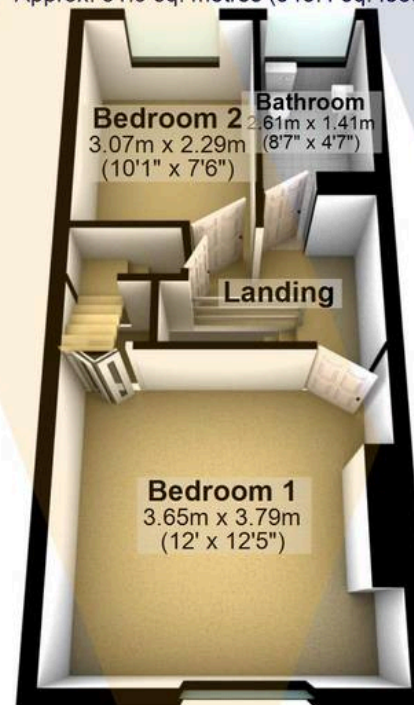
Ground Floor

Approx. 35.6 sq. metres (383.4 sq. feet)



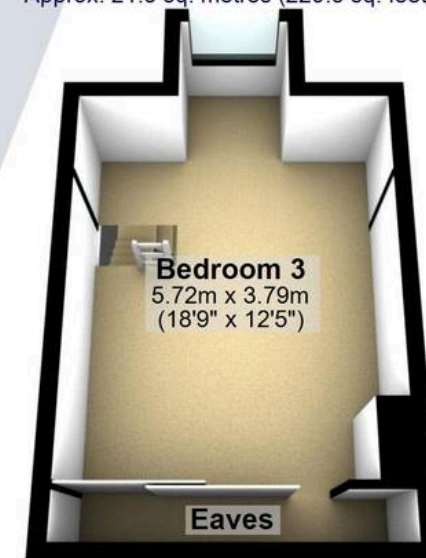
First Floor

Approx. 31.9 sq. metres (343.4 sq. feet)



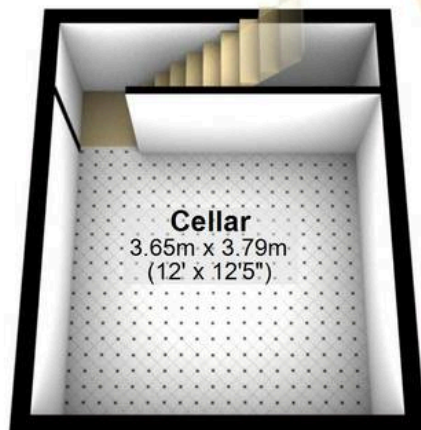
Second Floor

Approx. 21.3 sq. metres (229.5 sq. feet)



Cellar

Approx. 17.5 sq. metres (188.2 sq. feet)



Total area: approx. 106.3 sq. metres (1144.5 sq. feet)

All measurements are approximate
Plan produced using PlanUp.

800 Ecclesall Road