



WHITEHORNES

Buy. Sell. Let. Relax!

0114 268 8533
info@whitehorns.com
www.whitehorns.com

58 Fraser Road, Abbey Lane

Sheffield

Guide Price £275,000 - £285,000

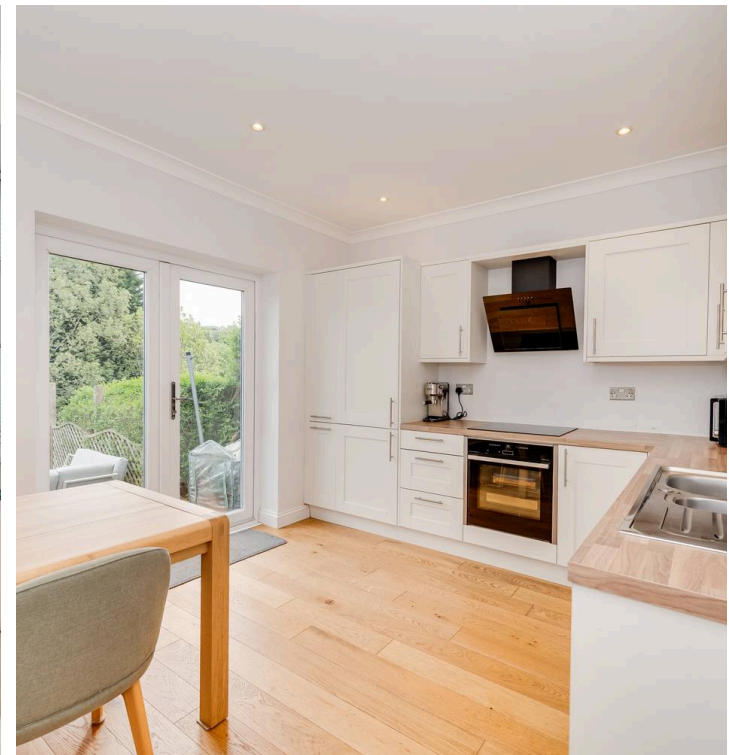
58 Fraser Road

Abbey Lane, Sheffield

This stunning three bedroom bay windowed semi-detached family home occupies a prime position in the heart of the highly sought-after Abbey Lane area, within easy reach of Woodseats, Millhouses and the picturesque Peak District. Immaculately presented throughout, the property has been finished to the very highest of standards with no expense spared, offering two beautifully light and spacious floors of accommodation that total an impressive 1,023 square feet.

Council Tax band: B Tenure: Leasehold

- STUNNING THREE BEDROOM BAY WINDOWED SEMI-DETACHED FAMILY HOME
- HUGE OPPORTUNITY FOR EXTENSION TO THE EXISTING BASEMENT AND LOFT AS THE NEIGHBOURING PROPERTIES HAVE DONE SUBJECT TO PLANNING
- INCREDIBLE FAR REACHING UNINTERRUPTED VIEWS TO THE REAR BEST ENJOYED FROM THE FIRST FLOOR BEDROOMS
- FINISHED INTERNALLY TO THE VERY HIGHEST OF STANDARDS WITH NO EXPENSE SPARED
- EXCELLENT SCHOOLING CATCHMENTS INCLUDING ABBEY LANE JUNIORS
- PITCH PERFECT FOR THE GROWING FAMILY MARKET OR PROFESSIONAL COUPLE WITH PLENTY OF SCOPE AND POTENTIAL TO ADD FUTURE VALUE
- BEAUTIFUL REAR AND INCREDIBLY PRIVATE GARDEN WITH DIRECT ACCESS TO A DECKED AREA FROM THE KITCHEN DINER ALONG WITH DRIVEWAY TO THE THE FRONT
- TWO BEAUTIFUL LIGHT AND SPACIOUS FLOORS OF ACCOMMODATION THAT TOTAL AN IMPRESSIVE 1,023 SQ FEET THAT NEEDS TO VIEWED
- HEART OF ULTRA POPULAR ABBEY LANE WITHIN EASY REACH OF WOODSEATS AND MILLHOUSES ALONG



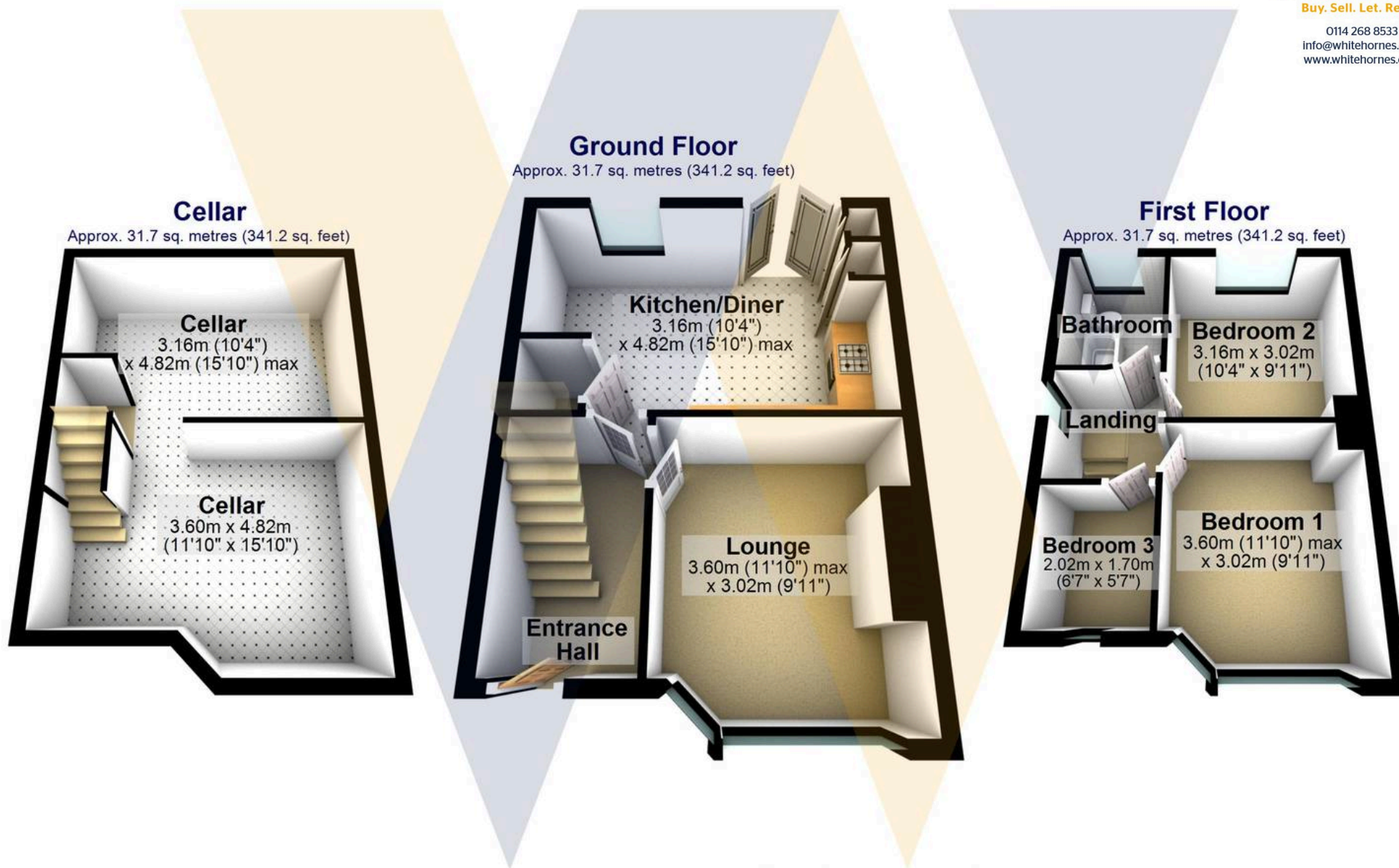




WHITEHORNES

Buy. Sell. Let. Relax!

0114 268 8533
info@whitehornes.com
www.whitehornes.com



Total area: approx. 95.1 sq. metres (1023.7 sq. feet)

All measurements are approximate
Plan produced using PlanUp.

58 Fraser Road