



WHITEHORNES

Buy. Sell. Let. Relax!

0114 268 8533
info@whitehorns.com
www.whitehorns.com

88 Murray Road, Sheffield

Sheffield

Guide Price £330,000 - £340,000

88 Murray Road

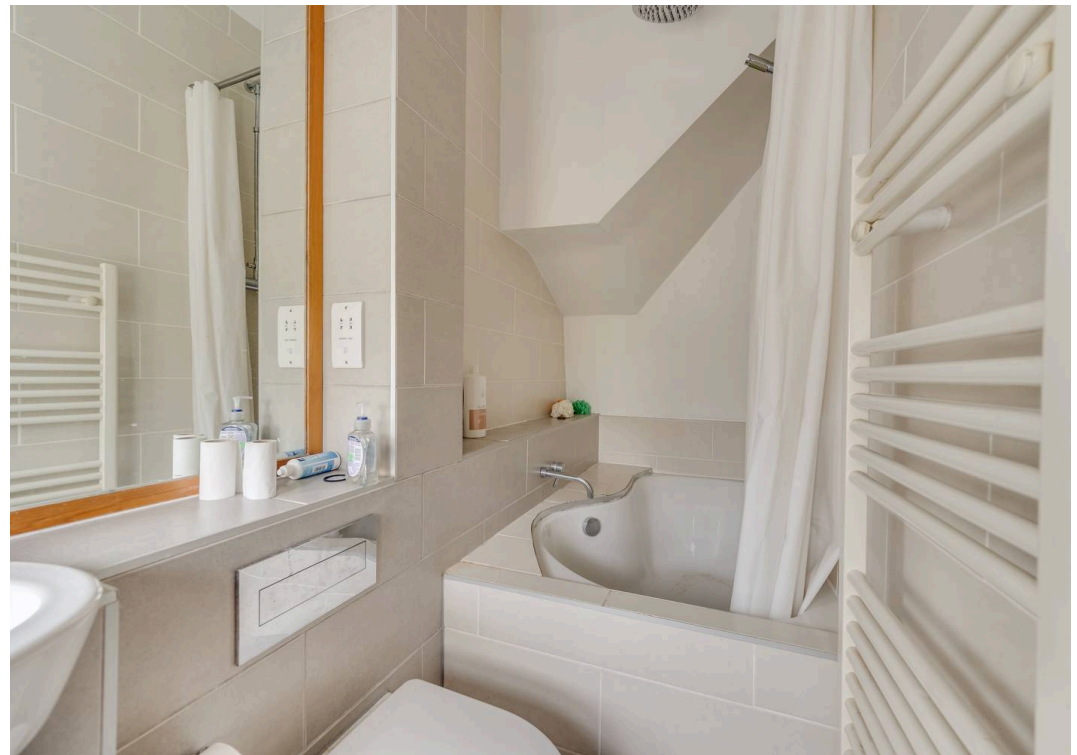
Sheffield, Sheffield

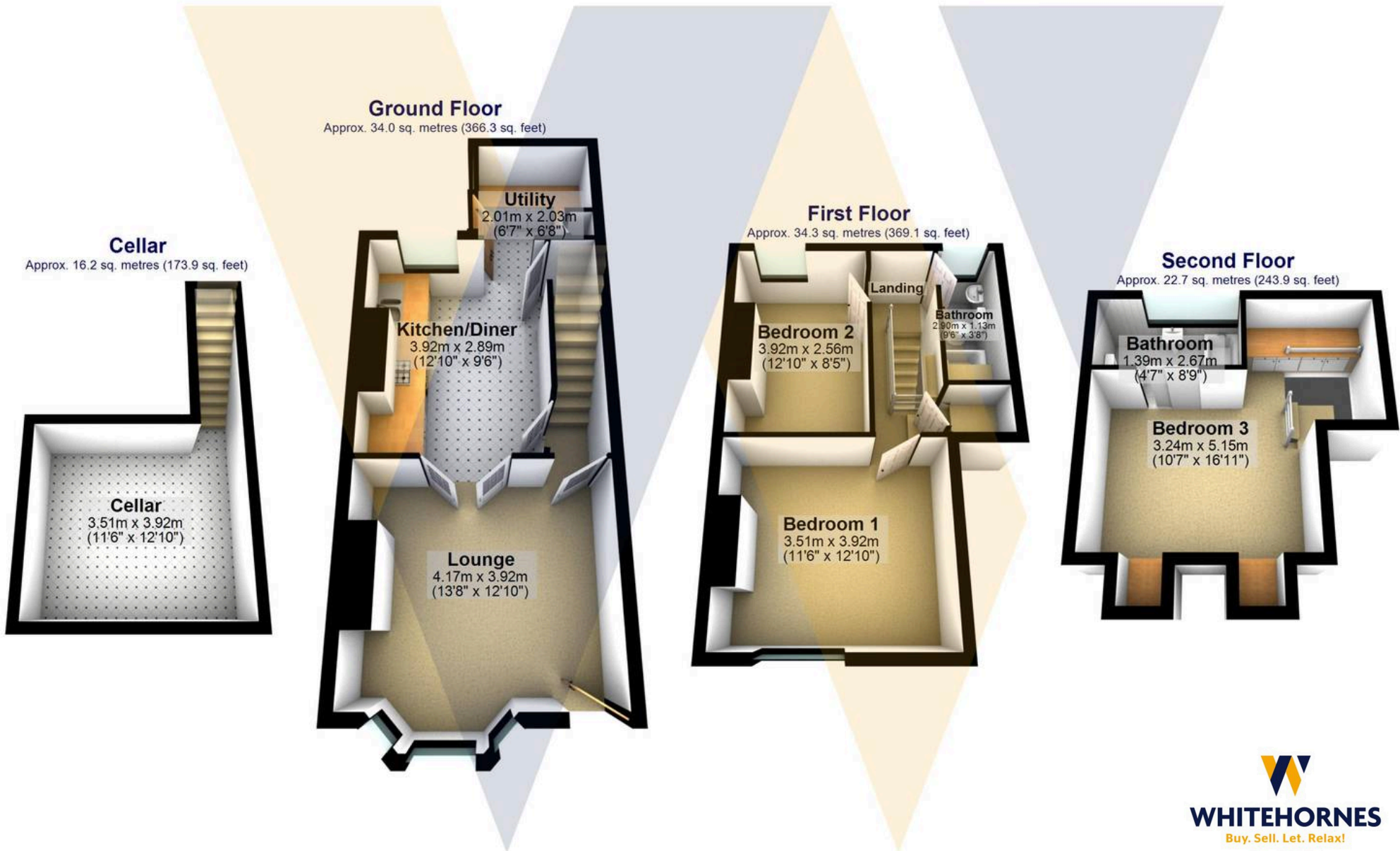
This beautifully presented and well-proportioned three bedroom, two bathroom, bay windowed Victorian mid-terraced house offers an impressive 1,153 square feet of light-filled accommodation arranged over three spacious floors. Situated in the heart of the highly sought-after Ecclesall area, this property offers the perfect blend of period charm and modern living, making it ideal for first time buyers, professional couples, and young families alike. The ground floor features a generous bay-fronted lounge, and a superb open plan fitted kitchen and dining area with a utility room (perfect for family living and entertaining). Upstairs, you will find two well-sized bedrooms and a contemporary family bathroom, while the top floor boasts a master loft bedroom complete with a stylish en-suite shower room.

Council Tax band: B Tenure: Leasehold

- WELL PRESENTED AND PROPORTIONED THREE BEDROOM TWO BATHROOM BAY WINDOWED VICTORIAN TERRACED PROPERTY
- THREE SPACIOUS AND LIGHT FILLED FLOORS OF ACCOMMODATION THAT TOTAL AN IMPRESSIVE 1,153 SQ FEET
- OPEN PLAN FITTED KITCHEN/DINER UTILITY ROOM AND MASTER LOFT BEDROOM WITH EN-SUITE SHOWER ROOM
- HEART OF ULTRA POPULAR ECCLESALL ON THIS WELL REGARDED RESIDENTIAL ROAD
- OFSTED RATED EXCELLENT SCHOOLING CATCHMENTS INCLUDING GREYSTONES JUNIORS AND HIGH STORRS SECONDARY
- PERFECT FOR FIRST TIME BUYERS PROFESSIONAL COUPLE AND YOUNG FAMILIES ALIKE WITH VIEWING ABSOLUTELY ESSENTIAL TO DO FULL JUSTICE







Total area: approx. 107.1 sq. metres (1153.2 sq. feet)

All measurements are approximate
Plan produced using PlanUp.

88 Murray Road