



WHITEHORSES

Buy. Sell. Let. Relax!

0114 268 8533
info@whitehorses.com
www.whitehorses.com

8 Beeches Bank, Sheffield

Sheffield

Offers in Region of **£135,000**

8 Beeches Bank

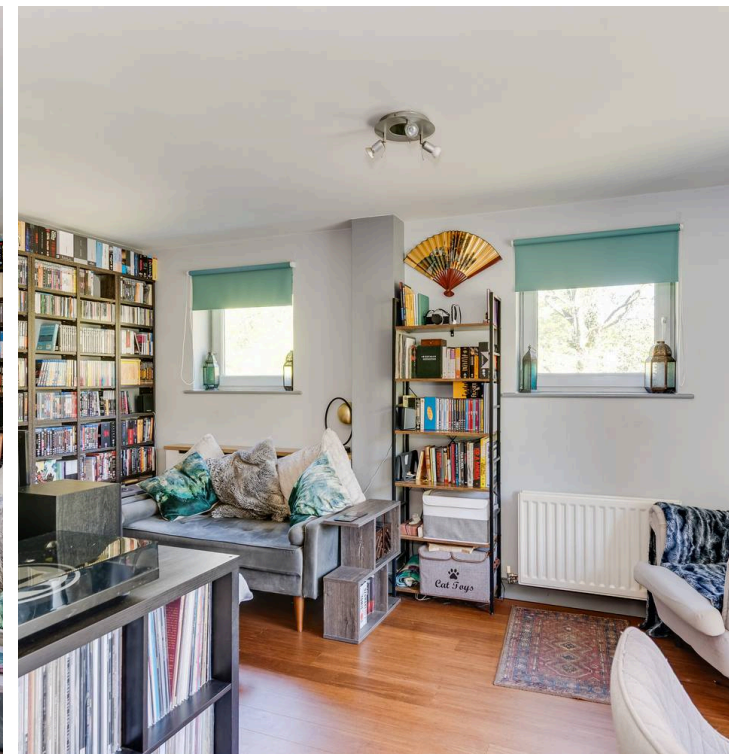
Sheffield, Sheffield

This modern and stylish two double bedroomed duplex apartment offers an excellent opportunity for first time buyers or professionals seeking a home in an enviable location close to the city centre. The property features a contemporary finish throughout, with spacious open-plan living and dining areas, a well-appointed kitchen, and two generously sized double bedrooms. The apartment benefits from fantastic views across the surrounding area, and is ideally situated for easy access to the Supertram network, making commuting straightforward. Norfolk Heritage Park is right on the doorstep, providing a wealth of green space, and reputable local schools are within easy reach. Designated off-road parking adds further convenience for residents. Outside is designated off road parking, communal grounds and there is a two private balconies.

Council Tax band: A

Tenure: Leasehold

- TWO DOUBLE BEDROOMED DUPLEX APARTMENT
- PERFECT FOR FIRST TIME BUYERS
- ENVIABLE LOCATION CLOSE TO THE CITY CENTRE
- MODERN AND STYLISH FINISH THROUGHOUT
- CLOSE THE SUPERTRAM NETWORK
- DESIGNATED OFF ROAD PARKING
- FANTASTIC VIEWS
- NORFOLK HERITAGE PARK IS RIGHT IN THE DOORSTEP
- REPUTABLE LOCAL SCHOOLS
- TWO BALCONIES PROVIDING PRIVATE OUTSIDE SPACE





Approx Gross Internal Area
51 sq m / 545 sq ft



Ground Floor
Approx 25 sq m / 269 sq ft

First Floor
Approx 26 sq m / 276 sq ft

This floorplan is only for illustrative purposes and is not to scale. Measurements of rooms, doors, windows, and any items are approximate and no responsibility is taken for any error, omission or mis-statement. Icons of items such as bathroom suites are representations only and may not look like the real items. Made with Made Snappy 360.