



WHITEHORNES

Buy. Sell. Let. Relax!

0114 268 8533
info@whitehorses.com
www.whitehorses.com



34 Hunstone Avenue, Meadowhead

Sheffield

Offers in Region of **£340,000**

34 Hunstone Avenue

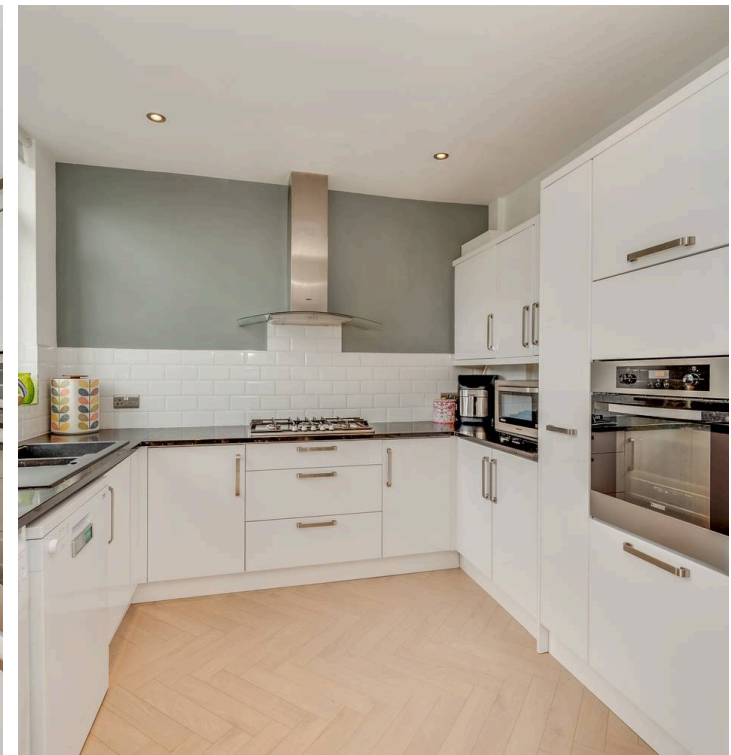
Meadowhead, Sheffield

This beautifully presented three bedroom semi-detached family home offers a modern and stylish finish throughout, making it perfect for growing families. Located in a highly sought-after area close to Graves Park and within the catchment for reputable local schools, the property boasts two spacious reception rooms and a convenient downstairs WC. The open plan kitchen and dining room provide a fantastic space for both entertaining and every-day family life, featuring contemporary fittings and ample natural light. Additional highlights include off road parking and a detached garage with lighting and power (ideal for storage or workshop use). Early viewing is advised to fully appreciate the quality and versatility of this superb home, which combines generous living accommodation with an excellent location for amenities, schools, and transport links.

Council Tax band: C

Tenure: Leasehold

- THREE BEDROOMED SEMI-DETACHED FAMILY HOME
- TWO RECEPTION ROOMS AND A DOWNSTAIRS WC
- FANTASTIC LOCATION CLOSE TO GRAVES PARK
- MODERN AND STYLISH FINISH THROUGHOUT
- OPEN PLAN KITCHEN/DINING ROOM FLOWING INTO A FAMILY FRIENDLY GARDEN
- PERFECT FOR GROWING FAMILIES
- LARGE SOUTH FACING PRIVATE GARDENS AND OFF ROAD PARKING
- DETACHED GARAGE WITH LIGHTING AND POWER
- EARLY VIEWING IS ADVISED
- SITS IN THE CATCHMENT FOR LOCAL REPUTABLE SCHOOLS





Outbuilding

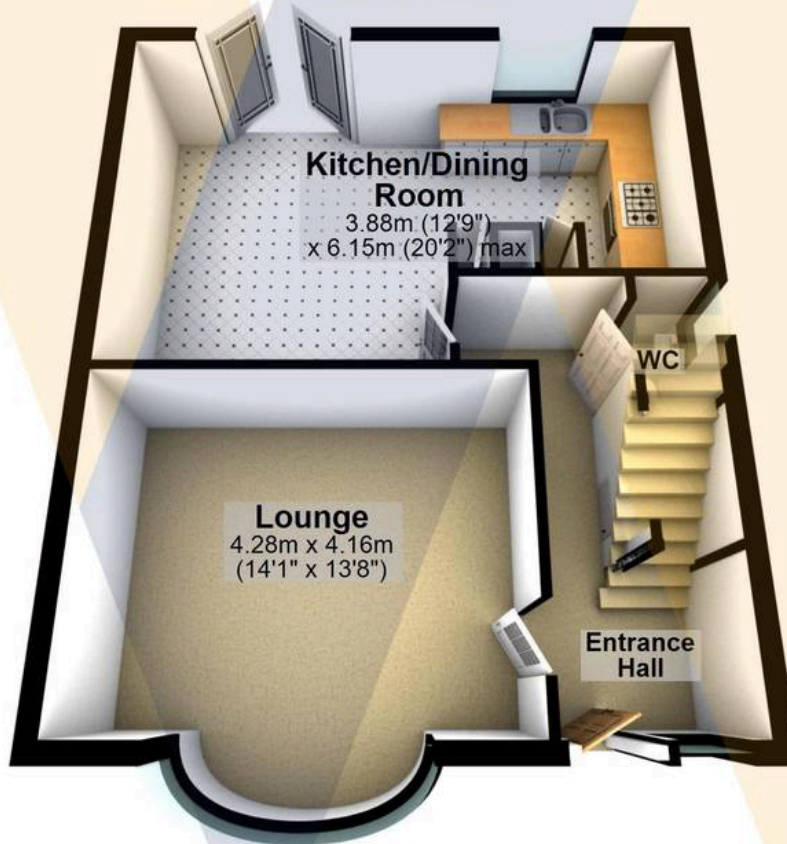
Approx. 11.7 sq. metres (125.7 sq. feet)



Garage
5.01m x 2.33m
(16'5" x 7'8")

Ground Floor

Approx. 43.8 sq. metres (471.3 sq. feet)



Kitchen/Dining Room
3.88m (12'9")
x 6.15m (20'2") max

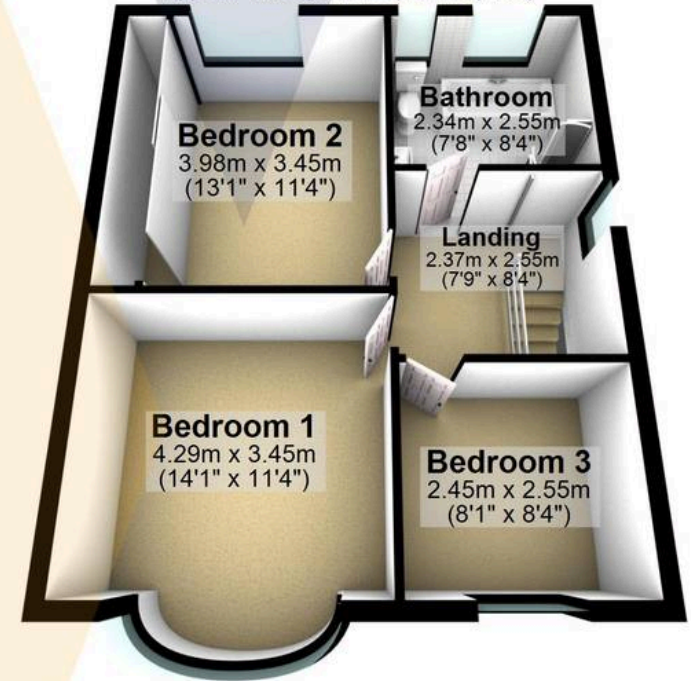
Lounge
4.28m x 4.16m
(14'1" x 13'8")

Entrance Hall

WC

First Floor

Approx. 45.3 sq. metres (487.5 sq. feet)



Bedroom 2
3.98m x 3.45m
(13'1" x 11'4")

Bathroom
2.34m x 2.55m
(7'8" x 8'4")

Landing
2.37m x 2.55m
(7'9" x 8'4")

Bedroom 1
4.29m x 3.45m
(14'1" x 11'4")

Bedroom 3
2.45m x 2.55m
(8'1" x 8'4")

Total area: approx. 100.8 sq. metres (1084.5 sq. feet)

All measurements are approximate
Plan produced using PlanUp.

34 Hunstone Avenue



WHITEHORSES

Buy. Sell. Let. Relax!

0114 268 8533
info@whitehorses.com
www.whitehorses.com