



**WHITEHORSES**

Buy. Sell. Let. Relax!

0114 268 8533  
info@whitehorses.com  
www.whitehorses.com

**134 Murray Road, Ecclesall**

Sheffield

**Guide Price £350,000 - £375,000**

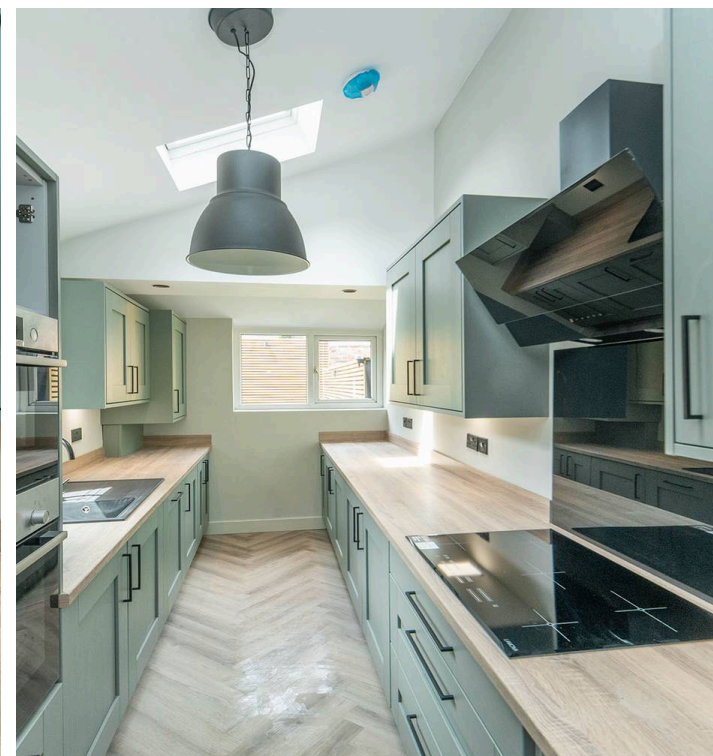
# 134 Murray Road

Ecclesall, Sheffield

Redefining the concept of contemporary open plan living, this exquisite three double bedroom bay windowed Victorian mid-terraced house is a true showcase of modern design and meticulous attention to detail. Spanning three stunning floors and offering an impressive 1,260 square feet of beautifully finished accommodation, the property has been thoughtfully renovated both internally and externally to the highest of standards, with no expense spared. The heart of the home features a seamless open plan living area (perfect for entertaining or relaxing), complemented by high-quality fixtures and a stylish, sophisticated aesthetic throughout. Each bedroom is generously sized, providing ample space for family living or flexible work-from-home arrangements. The property's interior design highlights a flair for creativity and functionality, with bespoke touches and premium finishes evident in every room.

Council Tax band: B Tenure: Leasehold

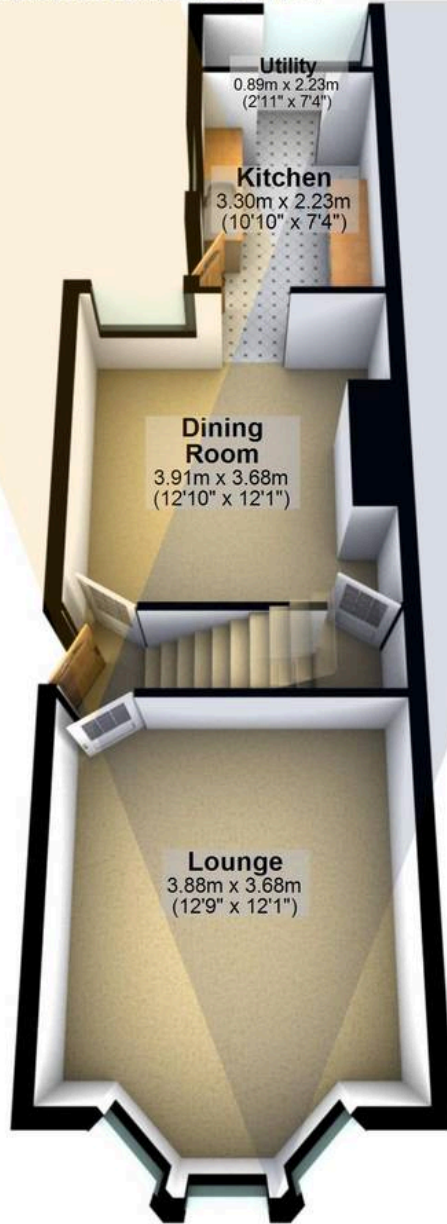
- REDEFINING THE TERM CONTEMPORARY MODERN OPEN PLAN LIVING IS THIS EXQUISITE THREE DOUBLE BEDROOM BAY WINDOWED VICTORIAN TERRACED
- FINISHED INTERNALLY AND EXTERNALLY TO THE HIGHEST OF STANDARDS WITH NO EXPENSE SPARED
- ATTENTION TO DETAIL AND A FLARE FOR DESIGN RUNS THROUGH THE VERY HEART OF THIS STUNNING PROPERTY
- THREE STUNNING FLOORS OF ACCOMMODATION TOTALLING AN IMPRESSIVE 1,260 SQ FEET
- OFSTED RATED EXCELLENT SCHOOLING CATCHMENTS INCLUDING GREYSTONES JUNIORS AND HIGH STORRS SECONDARY
- PRIVATE REAR LANDSCAPED SUNNY GARDEN EASY ON ROAD PARKING TO THE FRONT AND NO ONWARD





### Ground Floor

Approx. 42.7 sq. metres (459.4 sq. feet)



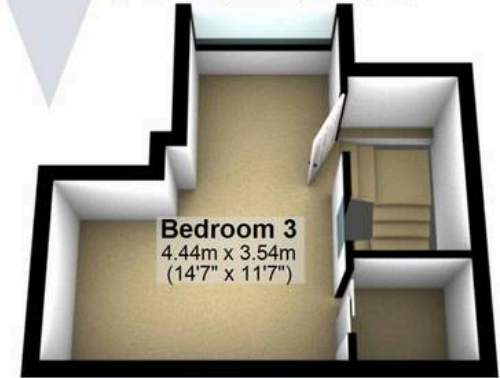
### First Floor

Approx. 39.1 sq. metres (420.7 sq. feet)



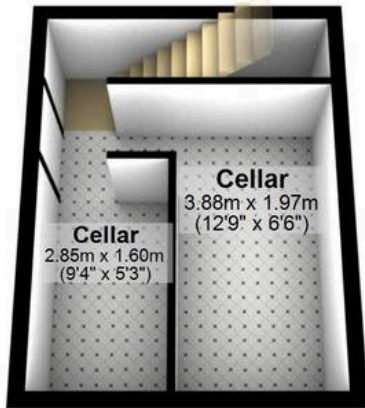
### Second Floor

Approx. 17.5 sq. metres (188.8 sq. feet)



### Cellar

Approx. 17.8 sq. metres (191.3 sq. feet)



Total area: approx. 117.1 sq. metres (1260.1 sq. feet)

All measurements are approximate  
Plan produced using PlanUp.

134 Murray Road



**WHITEHORNS**

Buy. Sell. Let. Relax!

0114 268 8533  
info@whitehorns.com  
www.whitehorns.com