



WHITEHORNES

Buy. Sell. Let. Relax!

0114 268 8533
info@whitehorses.com
www.whitehorses.com



225 Meadow Head, Sheffield

Sheffield

Offers in Region of **£325,000**

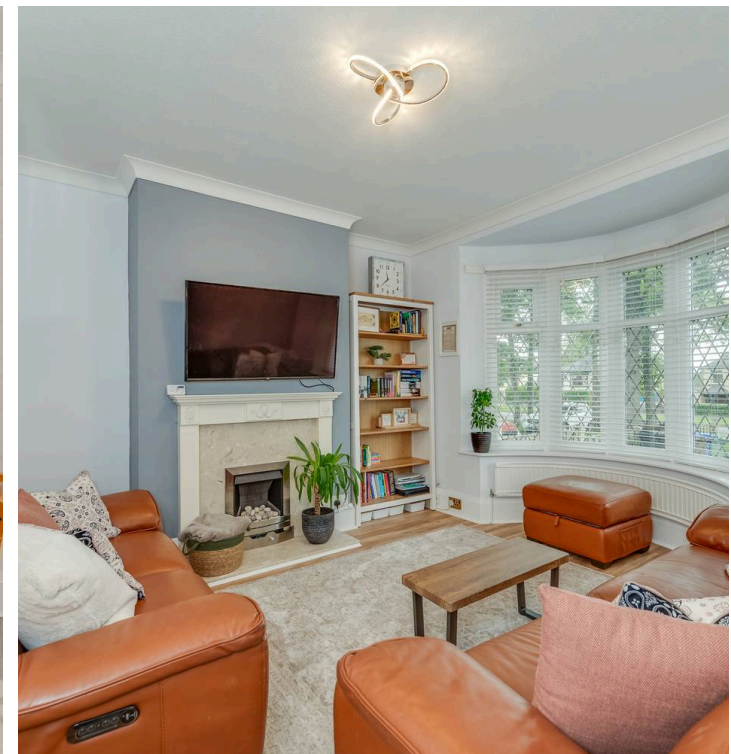
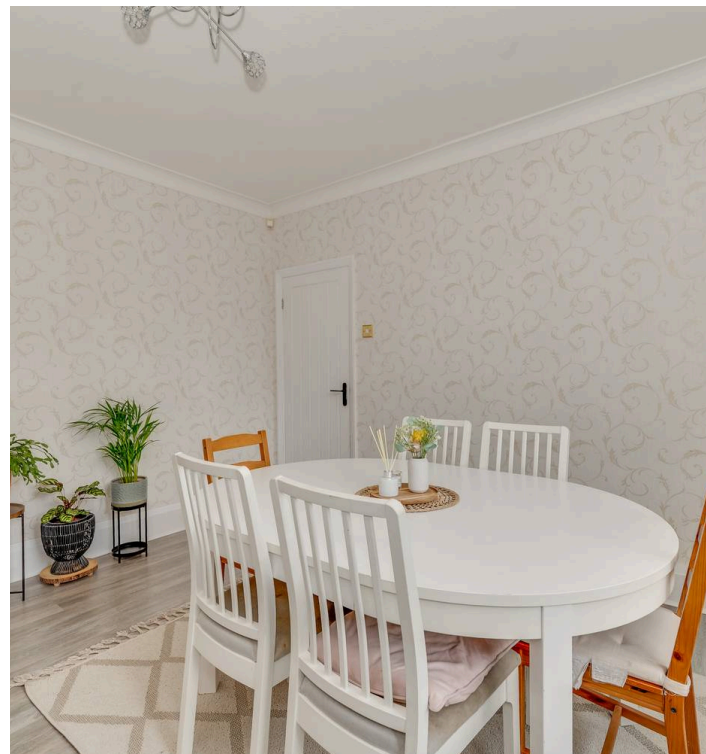
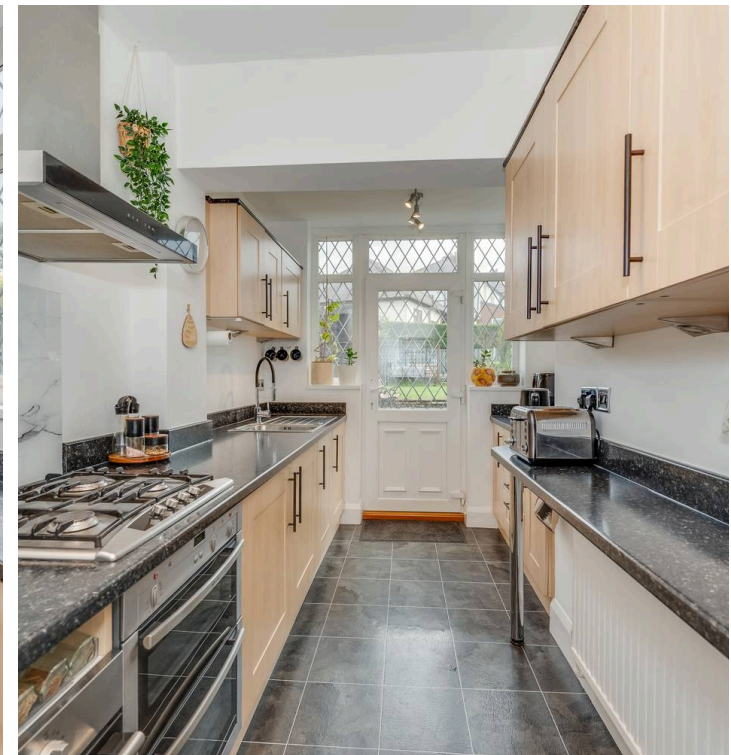
225 Meadow Head

Sheffield

This beautifully presented three bedroom semi-detached property offers an exceptional opportunity for families seeking a modern and stylish home in a highly desirable location. Boasting two generously sized reception rooms, the property provides flexible living space perfect for entertaining or relaxing. The contemporary kitchen and tasteful finishes throughout add to the sense of quality and comfort. Situated within the catchment area for reputable local schools, and just moments from a wealth of shops, cafes, and amenities, this home is ideally positioned for convenience. Graves Park is right on the doorstep, offering green open spaces for leisure and recreation. The property also benefits from a larger than average garage, providing ample storage or workshop potential, and there is scope for further expansion (subject to planning permission), making this an ideal choice for growing families. Outside is a large private garden to the rear and to the front is off road parking for numerous vehicles. Council Tax band: C

Tenure: Freehold

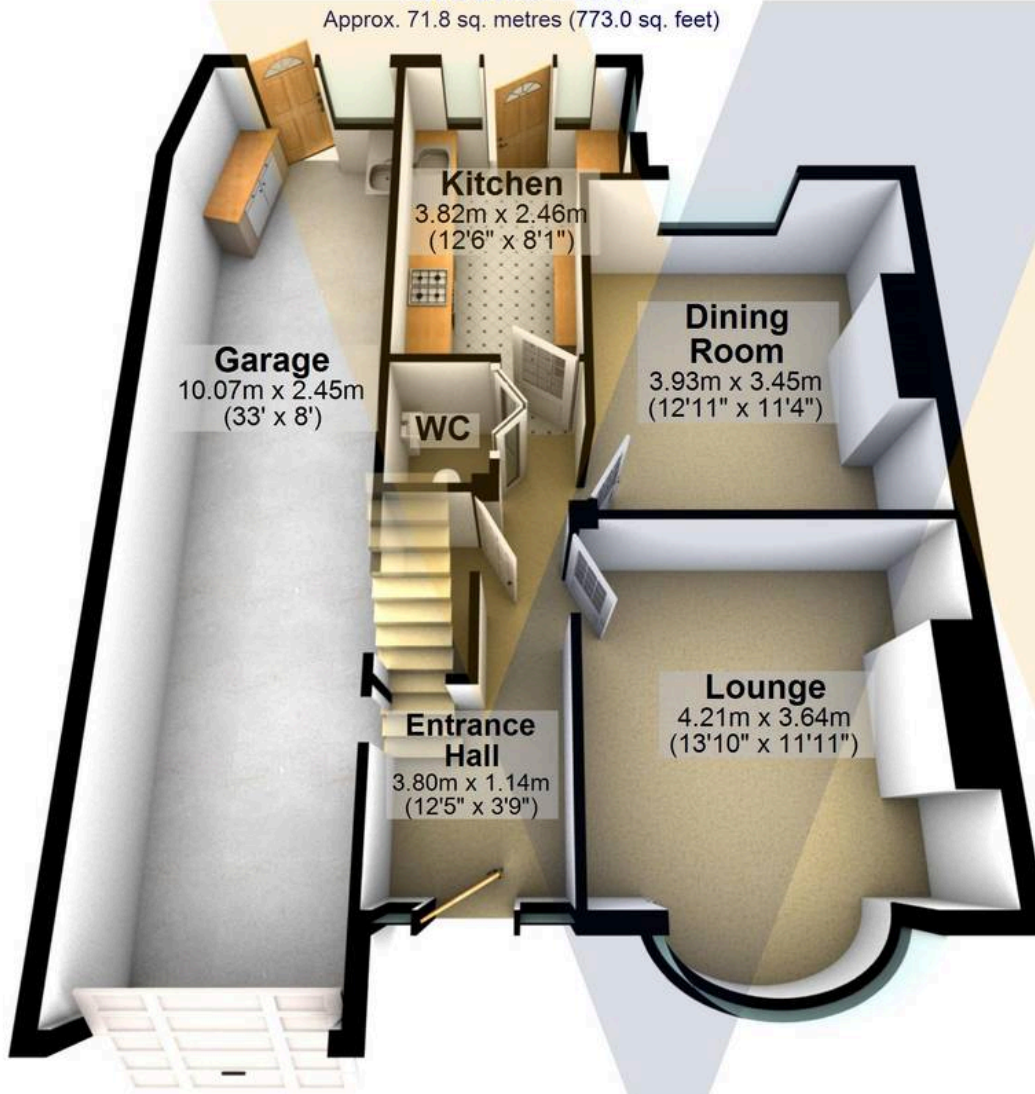
- THREE BEDROOMED SEMI-DETACHED PROPERTY
- LARGE GARDEN AND OFF ROAD PARKING TO THE FRONT
- FANTASTIC LOCATION CLOSE TO A WEALTH OF LOCAL SHOPS AND CAFES
- GRAVES PARK IS RIGHT ON THE DOORSTEP
- SITS IN THE CATCHMENT FOR LOCAL REPUTABLE SCHOOLS
- PERFECT FOR GROWING FAMILIES
- MODERN AND STYLISH FINISH THROUGHOUT
- TWO LARGE RECEPTION ROOMS
- LARGER THAN AVERAGE GARAGE





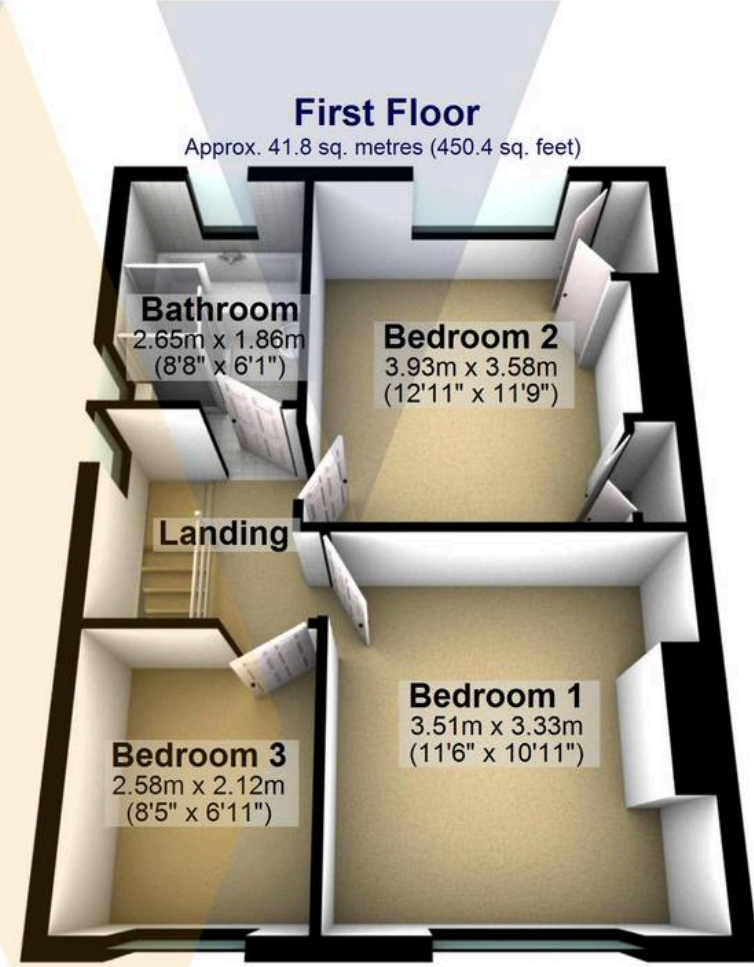
Ground Floor

Approx. 71.8 sq. metres (773.0 sq. feet)



First Floor

Approx. 41.8 sq. metres (450.4 sq. feet)



Total area: approx. 113.7 sq. metres (1223.4 sq. feet)

All measurements are approximate
Plan produced using PlanUp.

225 Meadowhead