



**WHITEHORNS**

Buy. Sell. Let. Relax!

0114 268 8533  
info@whitehorns.com  
www.whitehorns.com



**41 Ashford Road, Sharrowvale**

Sheffield

Offers in Region of **£260,000**

# 41 Ashford Road

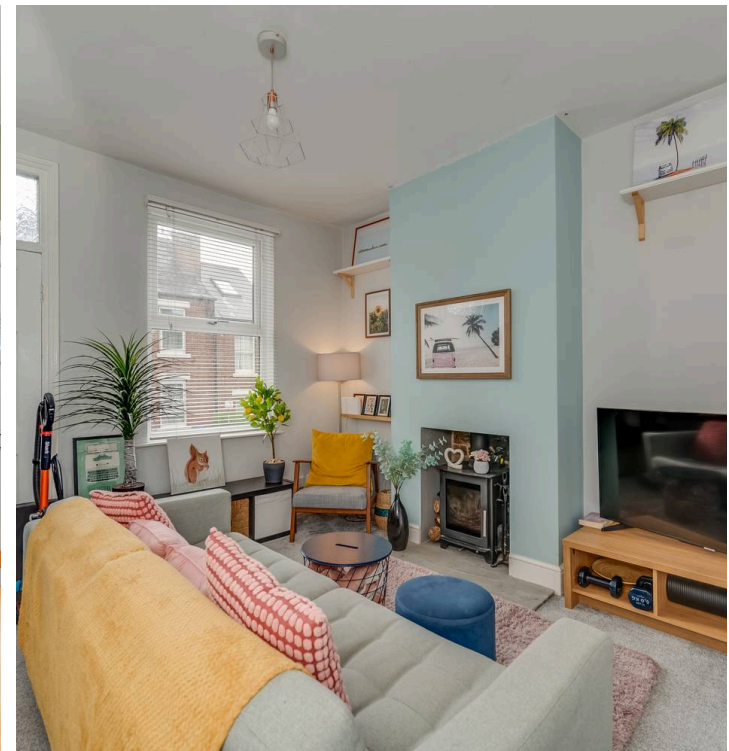
Sharrowvale, Sheffield

This well finished three bedroom mid-terraced property offers an excellent opportunity for growing families and first time buyers alike, positioned in a highly sought-after location close to Sharrowvale Road's vibrant selection of shops and restaurants. The home is sold with no onward chain, ensuring a smooth and swift purchase process. Inside, you will find spacious and tastefully presented accommodation arranged over three floors, thoughtfully designed to suit modern living. The property sits within the catchment area for reputable local schools, making it ideal for those with children, and boasts fantastic public transport links for easy access to the city centre and beyond. Endcliffe Park is within easy walking distance, providing convenient access to recreational amenities. Ample on street parking is available, offering practicality for residents and visitors. Early viewing is highly recommended to fully appreciate the quality of finish and the excellent location this property enjoys. Whether you are taking your first step onto the property ladder or seeking a comfortable family home in a vibrant community, this property is certain to impress with its combination of style, convenience, and location. Please contact our office to arrange your appointment to view.

Council Tax band: A

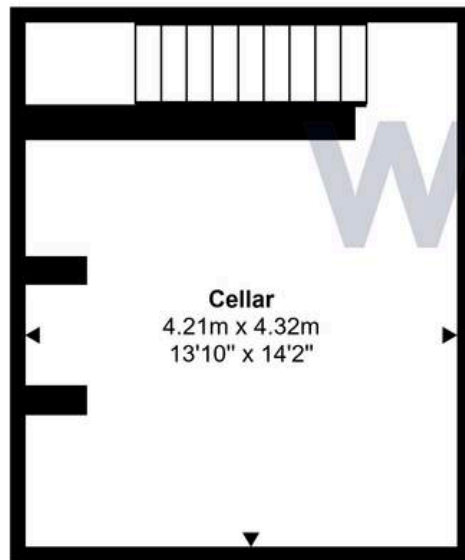
Tenure: Freehold

- THREE BEDROOMED MID-TERRACED VICTORIAN PROPERTY
- FANTASTIC LOCATION CLOSE TO SHARROWVALE ROADS MANY SHOPS AND RESTAURANTS
- PERFECT FOR GROWING FAMILIES AND FIRST TIME

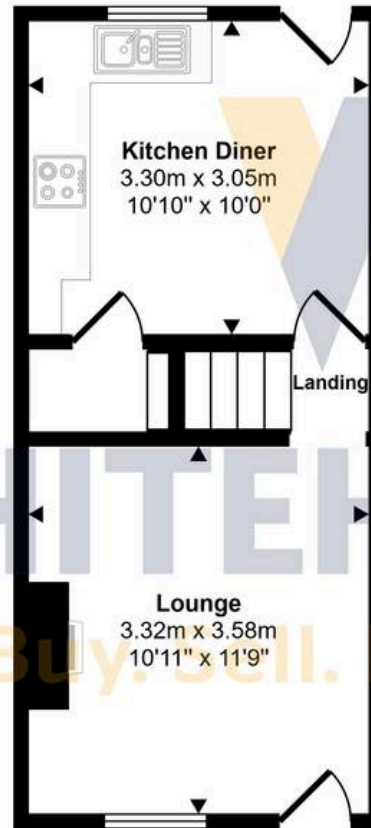




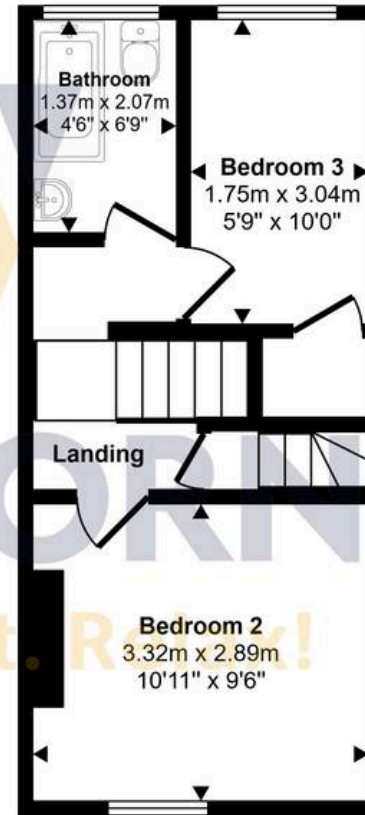
Approx Gross Internal Area  
88 sq m / 944 sq ft



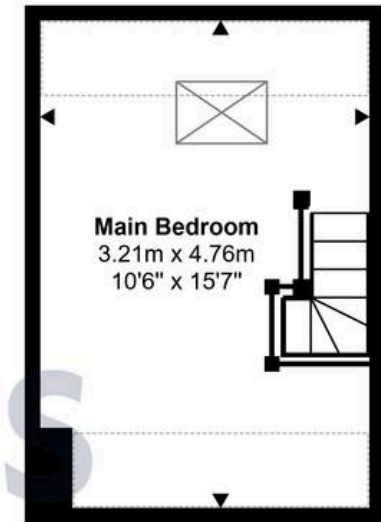
**Cellar**  
Approx 22 sq m / 232 sq ft




**Ground Floor**  
Approx 26 sq m / 275 sq ft



**First Floor**  
Approx 25 sq m / 272 sq ft



**Second Floor**  
Approx 15 sq m / 165 sq ft

 Denotes head height below 1.5m

This floorplan is only for illustrative purposes and is not to scale. Measurements of rooms, doors, windows, and any items are approximate and no responsibility is taken for any error, omission or mis-statement. Icons of items such as bathroom suites are representations only and may not look like the real items. Made with Made Snappy 360.