



**WHITEHORNES**

Buy. Sell. Let. Relax!

0114 268 8533  
info@whitehorns.com  
www.whitehorns.com



**9 Halesworth Road, Handsworth**

Sheffield

Offers in Region of **£160,000**

# 9 Halesworth Road

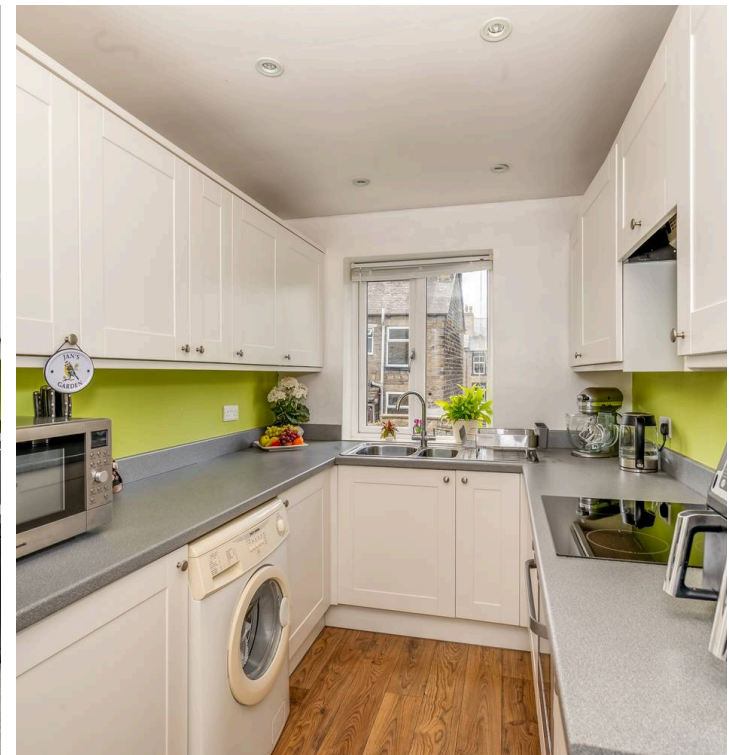
Handsworth, Sheffield

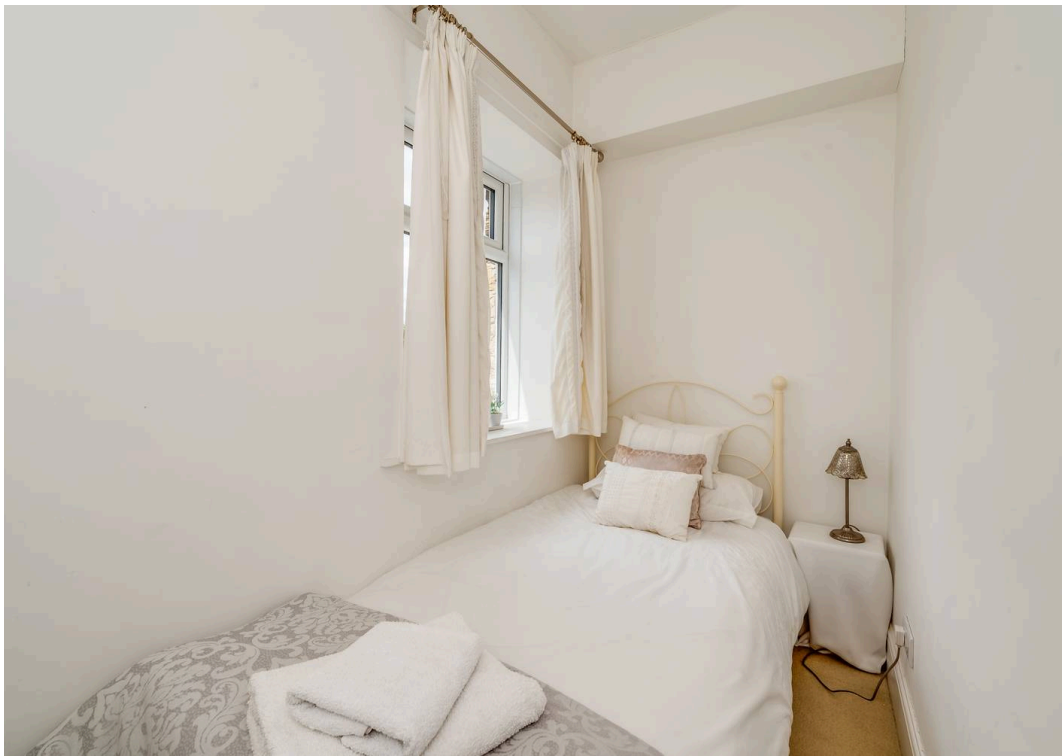
This exceptionally well presented two bedroomed mid-terraced property offers an ideal opportunity for first time buyers. The home features two spacious reception rooms, perfect for both relaxing and entertaining. The kitchen is well appointed and leads to a large double cellar, providing ample storage space. Upstairs, two well proportioned bedrooms are complemented by a modern bathroom. The property is situated close to fantastic transport links, making commuting convenient, and sits within the catchment area for local reputable schools. A wealth of local shops and cafes are just a short stroll away, adding to the convenience of this excellent location. Early viewing is advised to fully appreciate all that this home has to offer. Outside is a rear garden perfect for entertaining and to the front is ample on street parking.

Council Tax band: A

Tenure: Freehold

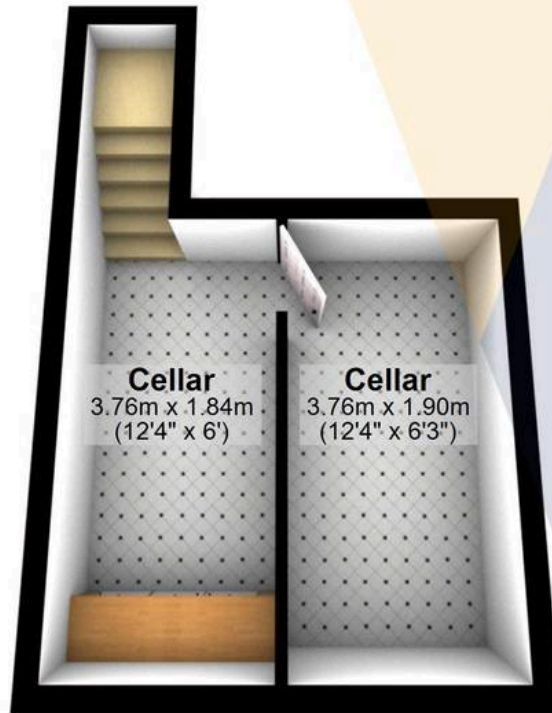
- EXCEPTIONALLY WELL PRESENTED TWO BEDROOMED MID-TERRACED PROPERTY
- PERFECT FOR FIRST TIME BUYERS
- REAR LOW MAINTENANCE GARDEN
- AMPLE ON STREET PARKING
- CLOSE TO FANTASTIC TRANSPORT LINKS
- TWO RECEPTION ROOMS
- SITS IN THE CATCHMENT AREA FOR LOCAL REPUTABLE SCHOOLS
- EARLY VIEWING IS ADVISED
- LARGE DOUBLE CELLAR PROVIDING AMPLE STORAGE
- CLOSE TO A WEALTH OF LOCAL SHOPS AND CAFES





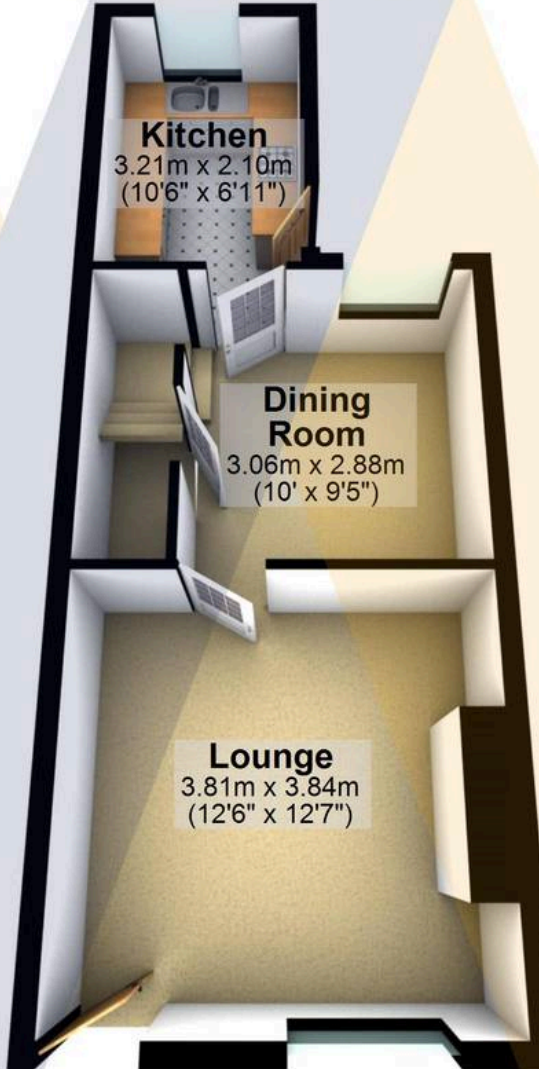
### Cellar

Approx. 18.7 sq. metres (201.4 sq. feet)



### Ground Floor

Approx. 33.7 sq. metres (362.6 sq. feet)



### First Floor

Approx. 26.7 sq. metres (287.7 sq. feet)



Total area: approx. 79.1 sq. metres (851.6 sq. feet)

All measurements are approximate  
Plan produced using PlanUp.

**9 Halesworth Road**