



WHITEHORNS

Buy. Sell. Let. Relax!

0114 268 8533
info@whitehorns.com
www.whitehorns.com



58 Lupton Crescent, Lowedges

Sheffield

Offers in Region of **£195,000**

58 Lupton Crescent

Lowedges, Sheffield

This immaculately presented three bedroom extended semi-detached home offers a modern and stylish finish throughout, making it an ideal choice for growing families. The spacious accommodation has been thoughtfully designed to maximise both comfort and practicality, featuring a generous lounge, a contemporary kitchen with integrated appliances and dining area, and well-proportioned bedrooms. Each room is finished to a high standard, creating a welcoming and move-in ready environment. The property benefits from off road parking to the front.

Council Tax band: A

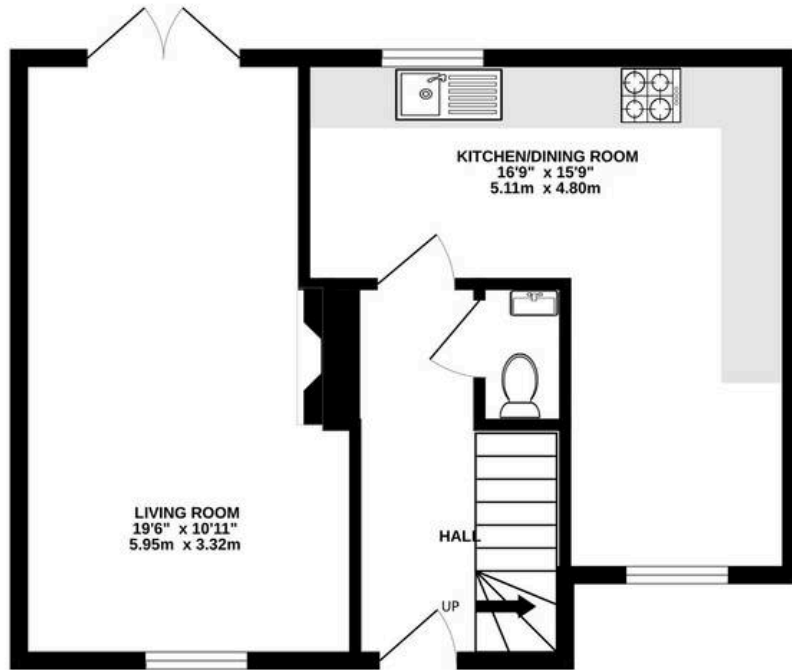
Tenure: Freehold

- THREE BEDROOMED EXTENDED SEMI-DETACHED HOME
- IMMACULATEDLY PRESENTED THROUGHOUT
- MODERN AND STYLISH FINISH
- PERFECT FOR GROWING FAMILIES
- PRIVATE GARDEN PERFECT FOR FAMILIES
- OFF ROAD PARKING TO THE FRONT
- CLOSE TO MANY LOCAL AMENITIES
- FREEHOLD PROPERTY
- AVAILABLE WITH NO ONWARD CHAIN
- SITS IN THE CATCHMENT FOR LOCAL REPUTABLE SCHOOLS

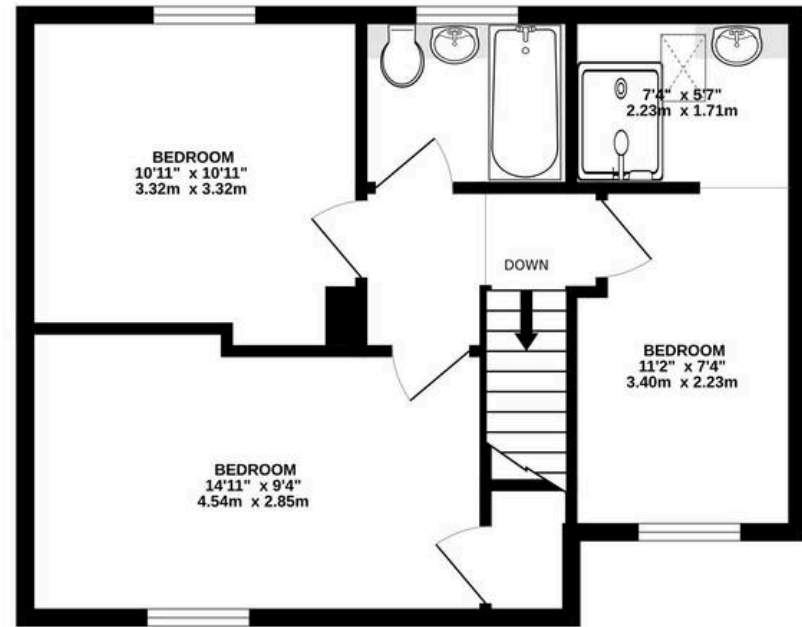




GROUND FLOOR
466 sq.ft. (43.3 sq.m.) approx.



1ST FLOOR
466 sq.ft. (43.3 sq.m.) approx.



TOTAL FLOOR AREA : 932 sq.ft. (86.6 sq.m.) approx.

Whilst every attempt has been made to ensure the accuracy of the floorplan contained here, measurements of doors, windows, rooms and any other items are approximate and no responsibility is taken for any error, omission or mis-statement. This plan is for illustrative purposes only and should be used as such by any prospective purchaser. The services, systems and appliances shown have not been tested and no guarantee as to their operability or efficiency can be given.
Made with Metropix ©2026