



**WHITEHORNES**

Buy. Sell. Let. Relax!

0114 268 8533  
info@whitehorses.com  
www.whitehorses.com



**112a, Upperthorpe, Walkley**

Sheffield

Offers in Region of **£180,000**

# 112a, Upperthorpe

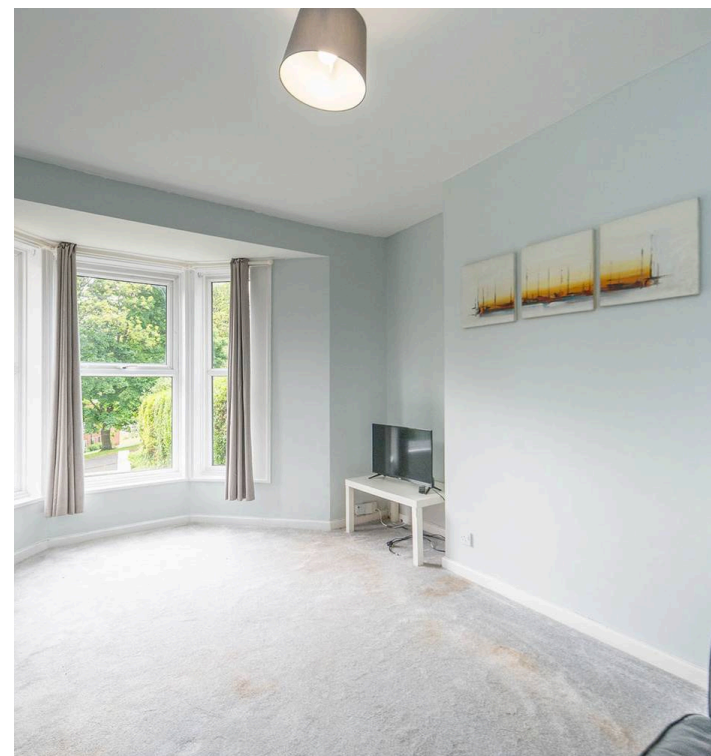
Walkley, Sheffield

A unique opportunity has arisen to purchase this beautifully presented two double bedroom ground floor apartment, forming part of an attractive semi-detached conversion property and being one of only two residences within the building. The apartment is offered with vacant possession and the benefit of no upward chain, making it an ideal choice for professional couples, first-time buyers, or those looking to downsize. The property enjoys a private entrance hallway, which leads to generously proportioned and stylish accommodation throughout. Both bedrooms are spacious doubles, providing comfortable living and excellent flexibility for a guest room or home

Council Tax band: A

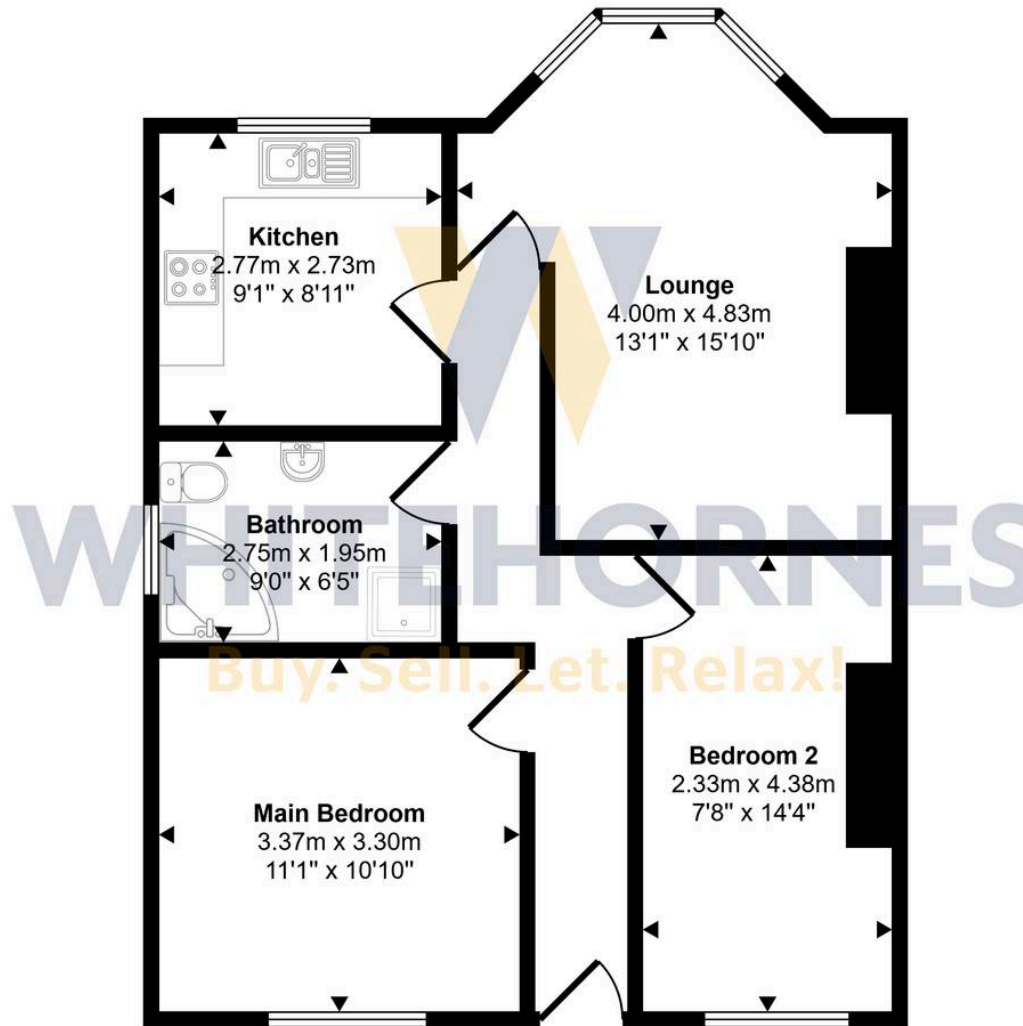
Tenure: Freehold

- UNIQUE OPPORTUNITY TO PURCHASE THIS TWO DOUBLE BEDROOM GROUND FLOOR APARTMENT
- FORMING PART OF THIS SEMI DETACHED CONVERSION PROPERTY AND BEING ONLY ONE OF TWO
- PRIVATE ENTRANCE HALLWAY OFF ROAD PARKING AND PRIVATE GARDEN AREA
- AVAILABLE TO MARKET WITH THE BENEFIT OF NO UPWARD CHAIN INVOLVED AND VACANT POSSESSION
- PERFECT FOR THE PROFESSIONAL COUPLE FIRST TIME BUYERS OR THOSE LOOKING TO DOWNSIZE
- VIEWING ABSOLUTELY ESSENTIAL TO FULLY APPRECIATE THE SIZE AND STYLE ON OFFER BY THIS TOTALLY GORGEOUS PROPERTY
- WELL SOUGHT AFTER RESIDENTIAL ROAD IN THE HEART OF THE BIRKENDALE ESTATE
- CLOSE TO FASHIONABLE WALKLEY WITH ITS ARRAY OF INDEPENDENT CAFES SHOPS AND EATERIES





Approx Gross Internal Area  
59 sq m / 638 sq ft



Floorplan

This floorplan is only for illustrative purposes and is not to scale. Measurements of rooms, doors, windows, and any items are approximate and no responsibility is taken for any error, omission or mis-statement. Icons of items such as bathroom suites are representations only and may not look like the real items. Made with Made Snappy 360.