



**WHITEHORSES**

Buy. Sell. Let. Relax!

0114 268 8533  
info@whitehorses.com  
www.whitehorses.com

## Flat 9, Abbey Court, Sheffield

Sheffield

Offers in Region of **£120,000**

# Flat 9

Abbey Court, Sheffield

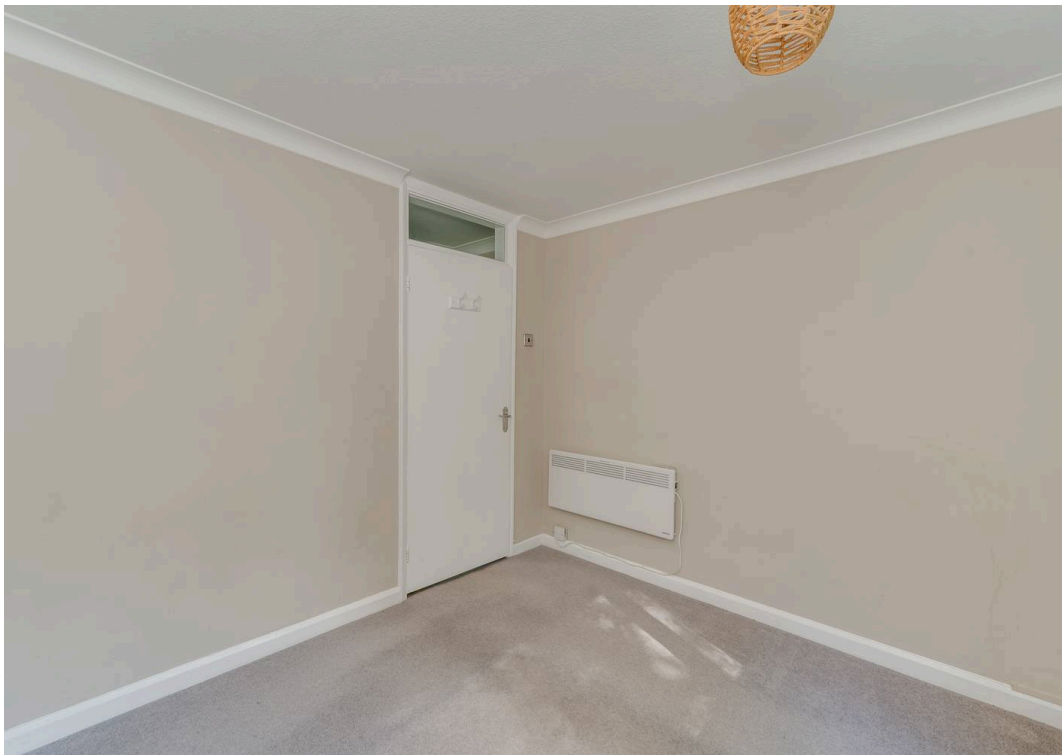
This well-presented one bedroom ground floor apartment offers an excellent opportunity for first time buyers or those seeking a reliable buy to let investment. Available with no onward chain, the property is ready to move in and is set in a highly desirable location close to shops, cafes, and local amenities. The apartment is situated within a quiet and secure development, providing peace of mind and a comfortable living environment. The open plan living space combines a modern kitchen with a spacious lounge area, creating a versatile setting for relaxing or entertaining. The bedroom is well-proportioned, and the bathroom is fitted with contemporary fixtures (ideal for easy maintenance). Additional benefits include off road parking, a secure entry system, and efficient heating. The property's convenient ground floor position enhances accessibility, making it suitable for a range of buyers. With its combination of location, security, and modern features, this apartment represents a fantastic opportunity for those looking to take their first step onto the property ladder or add to a rental portfolio. Early viewing is strongly advised to appreciate all that this apartment has to offer.

Council Tax band: A

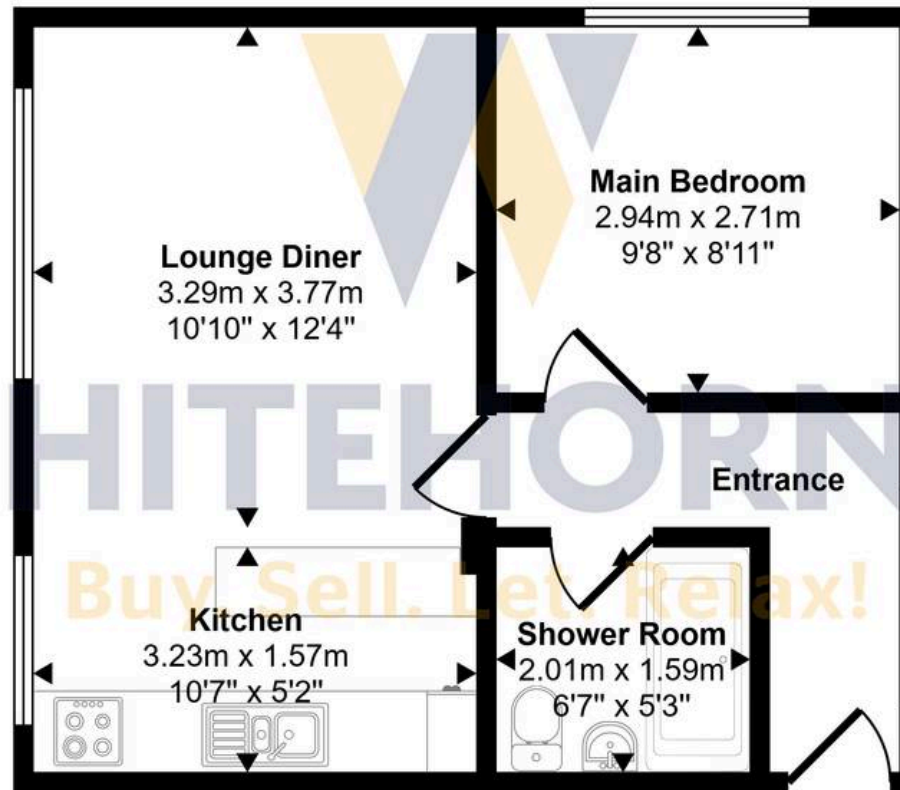
Tenure: Leasehold

- ONE BEDROOMED GROUND FLOOR APARTMENT
- AVAILABLE WITH NO ONWARD CHAIN
- GREAT LOCATION CLOSE TOP SHOPS AND CAFES
- VERY QUIET AND SECURE
- PERFECT FOR FIRST TIME BUYERS
- OFF ROAD PARKING
- GREAT BUY TO LET OPPORTUNITY





Approx Gross Internal Area  
35 sq m / 382 sq ft



Floorplan

This floorplan is only for illustrative purposes and is not to scale. Measurements of rooms, doors, windows, and any items are approximate and no responsibility is taken for any error, omission or mis-statement. Icons of items such as bathroom suites are representations only and may not look like the real items. Made with Made Snappy 360.