



WHITEHORNES

Buy. Sell. Let. Relax!

0114 268 8533
info@whitehornes.com
www.whitehornes.com

Flat 29, Hallam Chase, 64 Endcliffe Vale Road

Sheffield

Guide Price £80,000 - £85,000

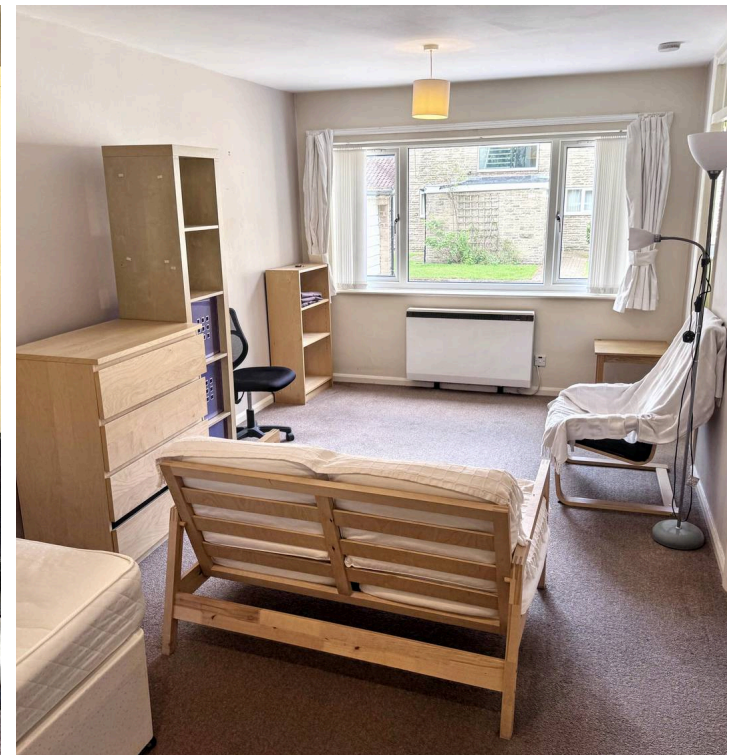
Flat 29

Hallam Chase, Sheffield

This excellent ground floor studio apartment is ideally located in the heart of the ever-popular Endcliffe area, on the sought-after south west side of the city. Forming part of a well-maintained residential development set back from the road, the property offers a light and airy living space that is perfectly suited to first-time buyers, savvy investors, or those looking to downsize. The apartment is available to the market with the benefit of no upward chain and vacant possession on completion, ensuring a smooth and straightforward purchase process. Internally, the studio is well presented, with a bright open-plan living and sleeping area, a separate fitted kitchen, and a modern shower room. Large windows allow plenty of natural light to flood the space, creating a welcoming and comfortable atmosphere throughout.

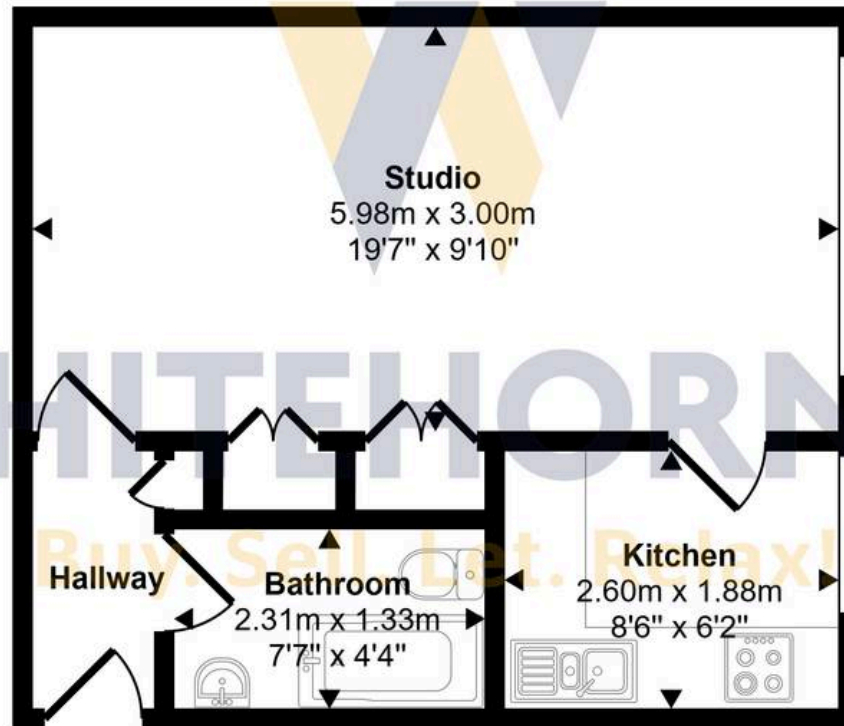
Council Tax band: A Tenure: Leasehold

- EXCELLENT GROUND FLOOR STUDIO APARTMENT
- HEART OF ULTRA POPULAR ENDCLIFFE ON THE SOUTH WEST OF THE CITY
- WALKING DISTANCE TO THE HALLAMSHIRE HOSPITAL AND PRINCIPAL UNIVERSITIES
- AVAILABLE TO MARKET WITH THR BENEFIT OF NO UPWARD CHAIN AND VACANT POSSESSION ON COMPLETION
- PERFECT FOR THE FIRST BUY SAVVY INVESTOR OR THOSE LOOKING TO DOWNSIZE
- FORMING PART OF THIS WELL MAINTAINED RESIDENTIAL DEVELOPMENT SET BACK FROM THE ROAD
- VIEWING ADVISED TO FULLY APPRECIATE THIS LIGHT AND AIRY PROPERTY





Approx Gross Internal Area
31 sq m / 329 sq ft



Studio

This floorplan is only for illustrative purposes and is not to scale. Measurements of rooms, doors, windows, and any items are approximate and no responsibility is taken for any error, omission or mis-statement. Icons of items such as bathroom suites are representations only and may not look like the real items. Made with Made Snappy 360.