



**WHITEHORSES**

Buy. Sell. Let. Relax!

0114 268 8533  
info@whitehorses.com  
www.whitehorses.com

**50 Meadow Head, Sheffield**

Sheffield

GUIDE PRICE **£435,000**



# 50 Meadow Head

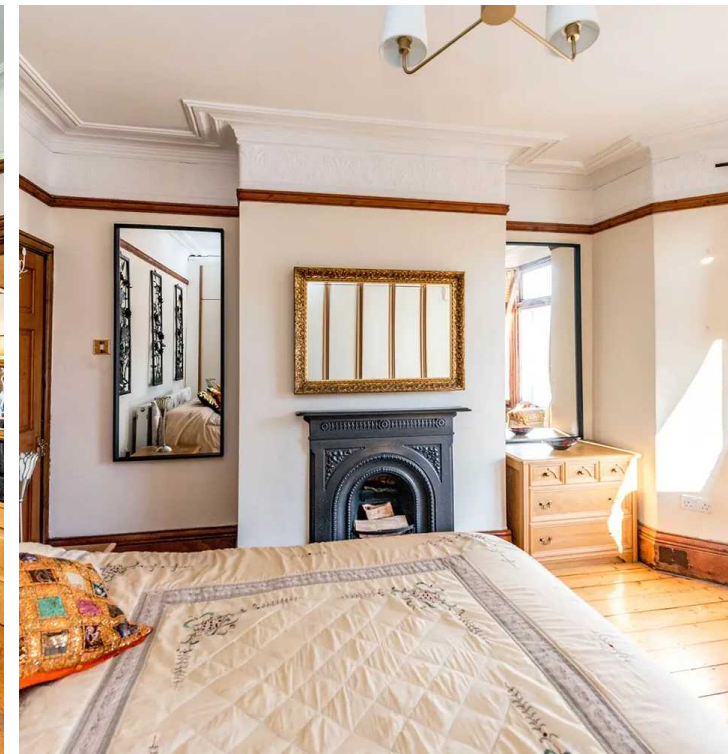
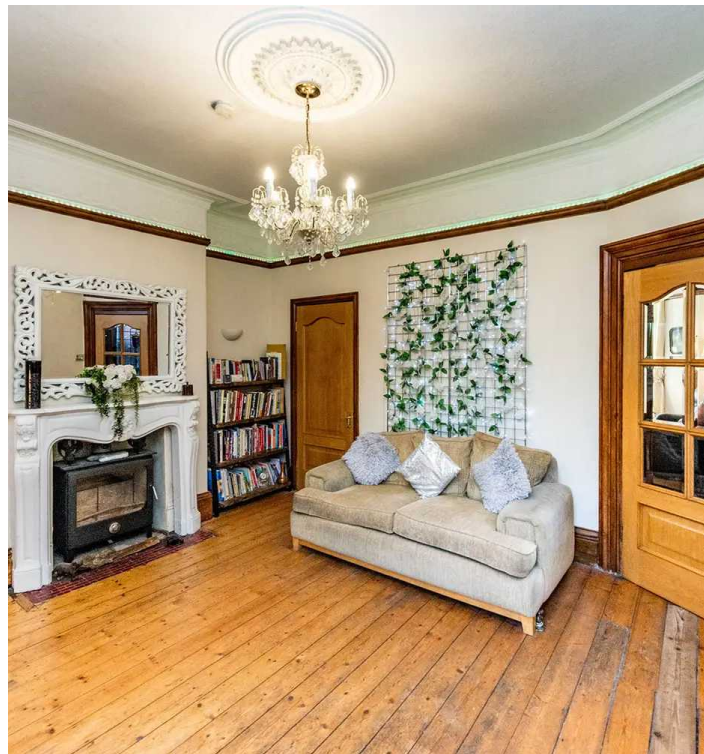
Sheffield, Sheffield

An absolutely fantastic, immaculately presented and very well proportioned three double bedrooomed, Victorian, bay windowed, semi-detached family home. Having been finished to a great standard throughout by the current vendors whilst also retaining many of its original features, character and charm associated with a property from this era. Perfect for the growing family, number 50 enjoys three versatile floors of accommodation that total an impressive 1,752 sq feet together with a private garden, off road parking to the front with garage. Located in the very heart of popular Meadowhead with the ever popular Graves Park right across the road as well as having local reputable schools and easy access to a wealth of local shops, cafes and pubs.

Council Tax band: D

Tenure: Freehold

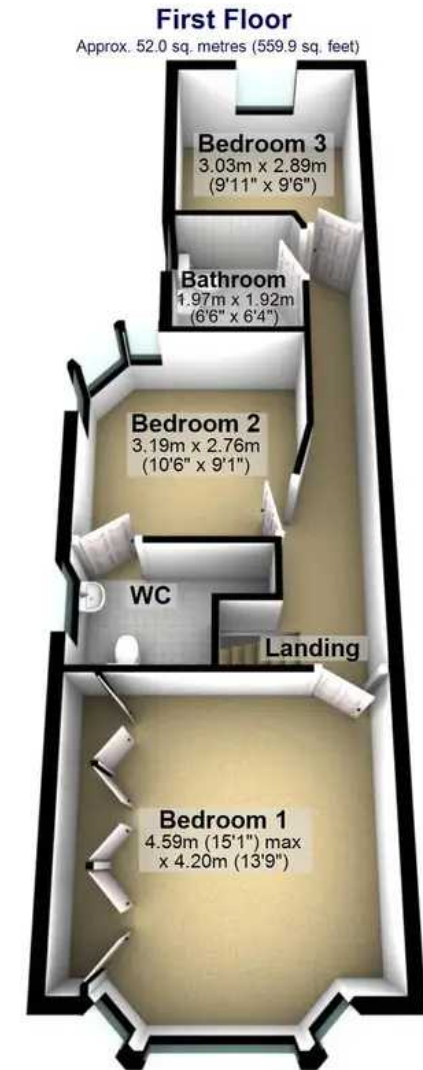
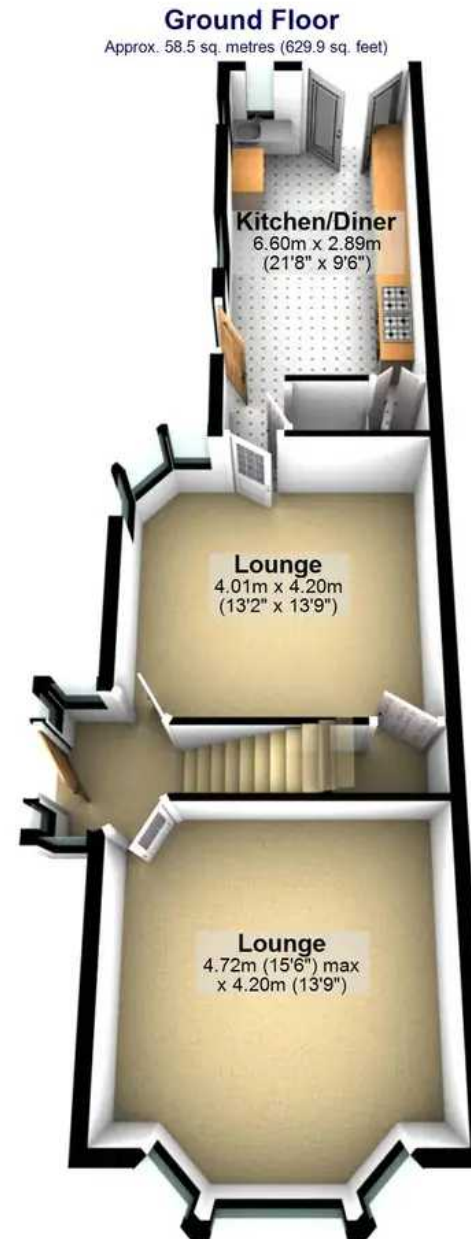
- THREE DOUBLE BEDROOMS
- THREE RECEPTION ROOMS
- OFF ROAD PARKING AND GARAGE
- STUNNING VICTORIAN PERIOD PROPERTY
- LARGE GARDEN
- CLOSE TO GRAVES PARK
- POTENTIAL TO EXPAND TO THE ATTIC
- REPUTABLE LOCAL SCHOOLS
- WEALTH OF LOCAL AMENITIES
- GREAT TRANSPORT LINKS











Total area: approx. 162.8 sq. metres (1752.5 sq. feet)

All measurements are approximate  
Plan produced using PlanUp.