



WHITEHORNS
Buy. Sell. Let. Relax!
0114 268 8533
info@whitehorns.com
www.whitehorns.com

169 Hunter House Road, Brincliffe
Sheffield

Guide Price £500,000 – £525,000

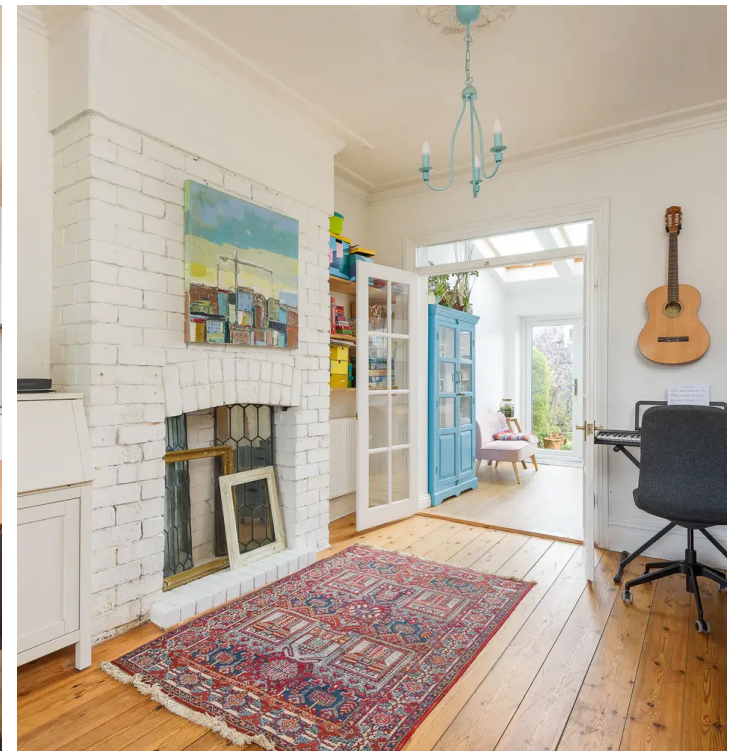
169 Hunter House Road

Brincliffe, Sheffield

An absolutely sensational, four double bedroomed, two bathroomed, stone fronted, bay windowed, semi detached family home. Having been tastefully extended to the rear and loft to create a property that is pitch perfect for the growing family. With accommodation carefully arranged over three floors that total an impressive 1,775 sq feet, it's easy to say that viewing is absolutely essential to fully appreciate the size and style on offer. Enjoying some wonderful views to the rear, private rear garden and easy on road parking to the front the property is placed towards the top of this well sought after residential road in the very heart of ultra popular Brincliffe. Falling within catchment for excellent schools including Hunters Bar juniors and High Storrs secondary number 169 is within a short stroll of fashionable Sharrow Vale and Ecclesall road that offer an array of independent cafes, eateries and shops.

Council Tax band: C Tenure: Freehold

- FABULOUS FOUR DOUBLE BEDROOM STONE FRONTED SEMI DETACHED WITH TWO BATHROOMS
- INCREDIBLY RARE OPPORTUNITY TO MARKET WITH VIEWING ESSENTIAL
- TASTEFULLY EXTENDED TO THE REAR AND LOFT
- THREE FLOORS OF ACCOMMODATION TOTALLING AN IMPRESSIVE 1,775 SQ FT
- OFSTED RATED EXCELLENT SCHOOLING CATCHMENTS OF HUNTERS BAR AND HIGH STORRS SECONDARY
- LOCATED ON THIS QUIET AND FLAT PART OF HUNTER HOUSE ROAD
- EASY ACCESS TO FASHIONABLE SHARROW VALE AND BANNER CROSS
- FINISHED TO A SUPER HIGH STANDARD THROUGHOUT





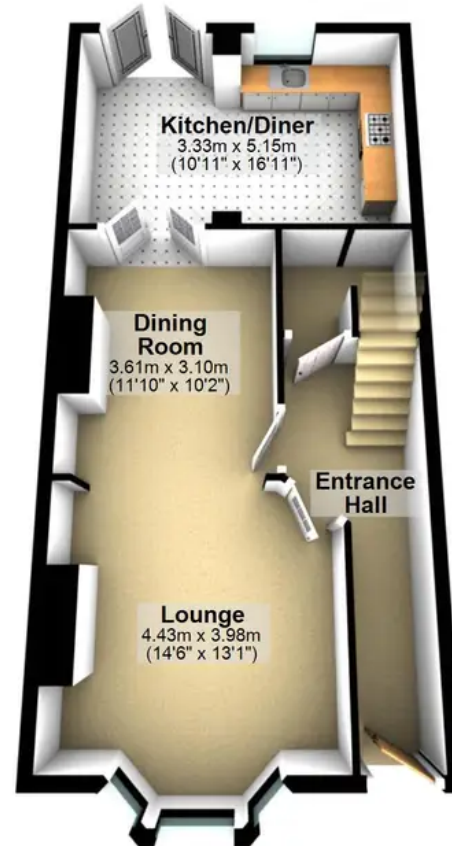
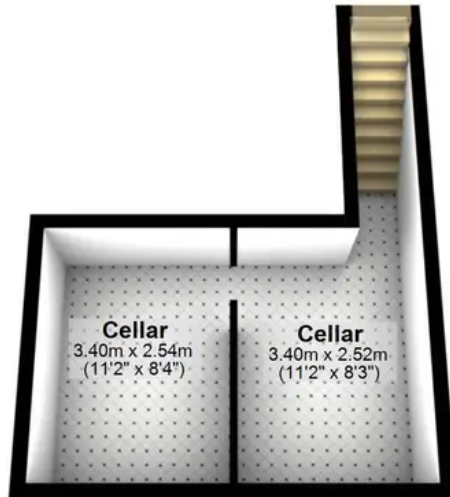
Ground Floor

Approx. 55.6 sq. metres (599.0 sq. feet)



Cellar

Approx. 20.4 sq. metres (219.1 sq. feet)



First Floor

Approx. 47.5 sq. metres (510.9 sq. feet)



Second Floor

Approx. 35.9 sq. metres (386.1 sq. feet)



Total area: approx. 165.0 sq. metres (1775.9 sq. feet)

All measurements are approximate
Plan produced using PlanUp.