



WHITEHORNES

Buy. Sell. Let. Relax!

0114 268 8533
info@whitehorns.com
www.whitehorns.com

15 Monarchs Gate, St. Andrews Road, Brincliffe

Sheffield

Guide Price £200,000 - £220,000

15 Monarchs Gate, St. Andrews Road

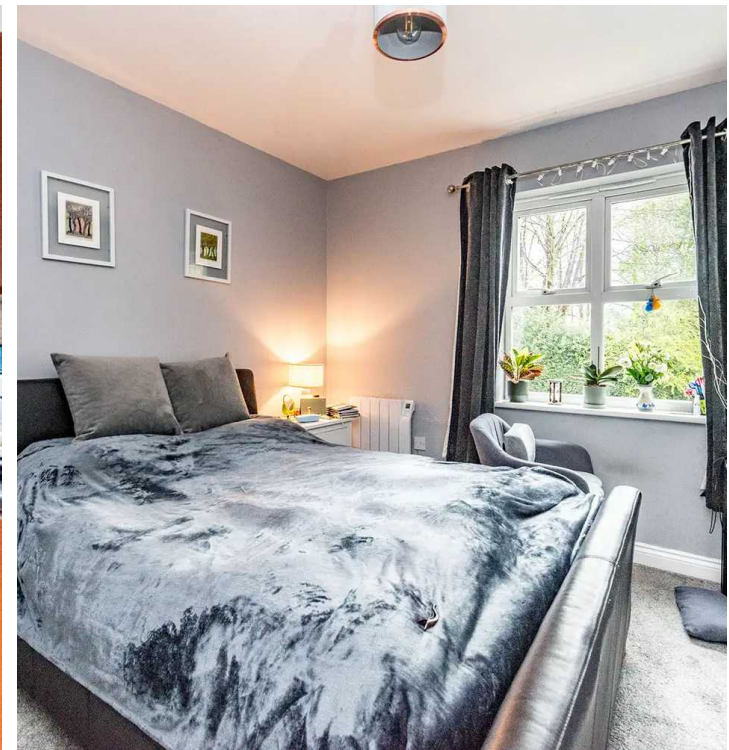
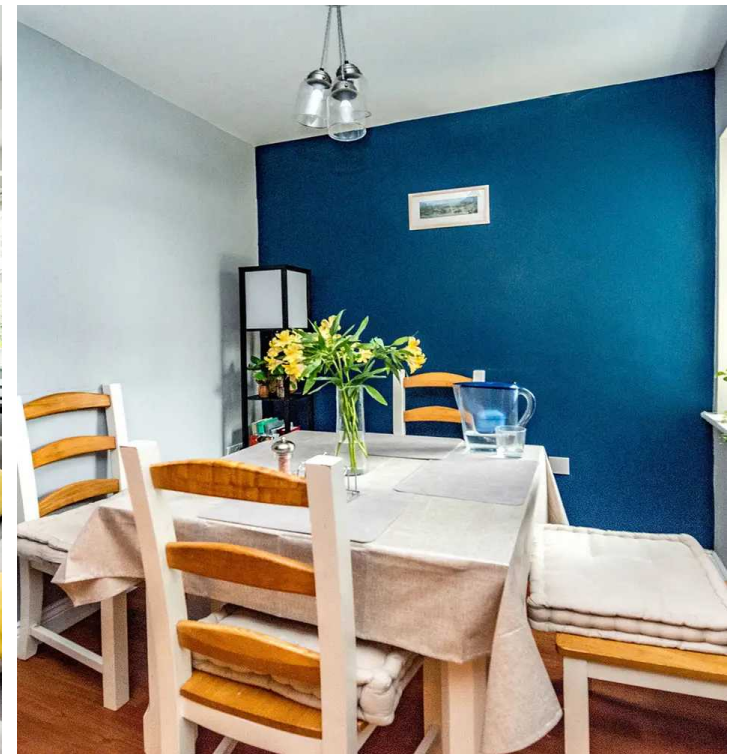
Brincliffe, Sheffield

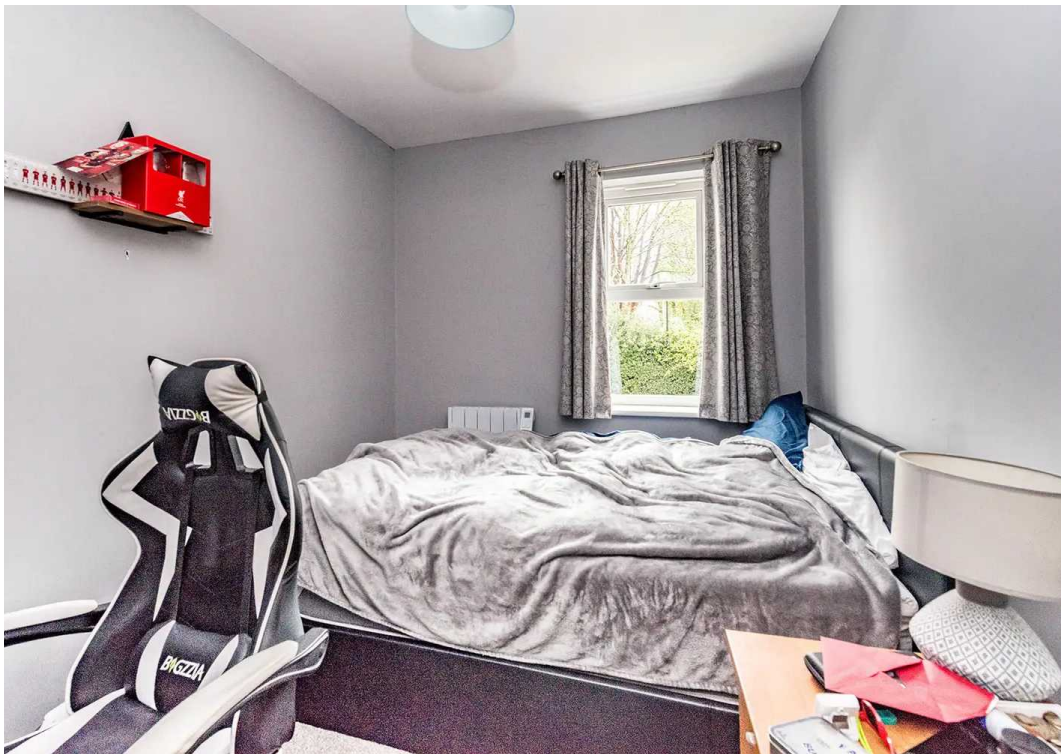
A smartly finished and very spacious two bedroom, first floor apartment. Forming part of this exclusive stone built development in the very heart of ultra popular Brincliffe. Offered to the open market with the benefit of no upward chain and being vacant on completion it's easy to say this property will be perfect for the professional couple, investors or those looking to downsize. Situated within easy access of fashionable Nether Edge and Sharrow Vale that boast an array of independent cafes, eateries and shops, Chelsea park is a short hop as are principal hospitals and universities and not forgetting The Peak District is on the doorstep.

Council Tax band: C

Tenure: Leasehold

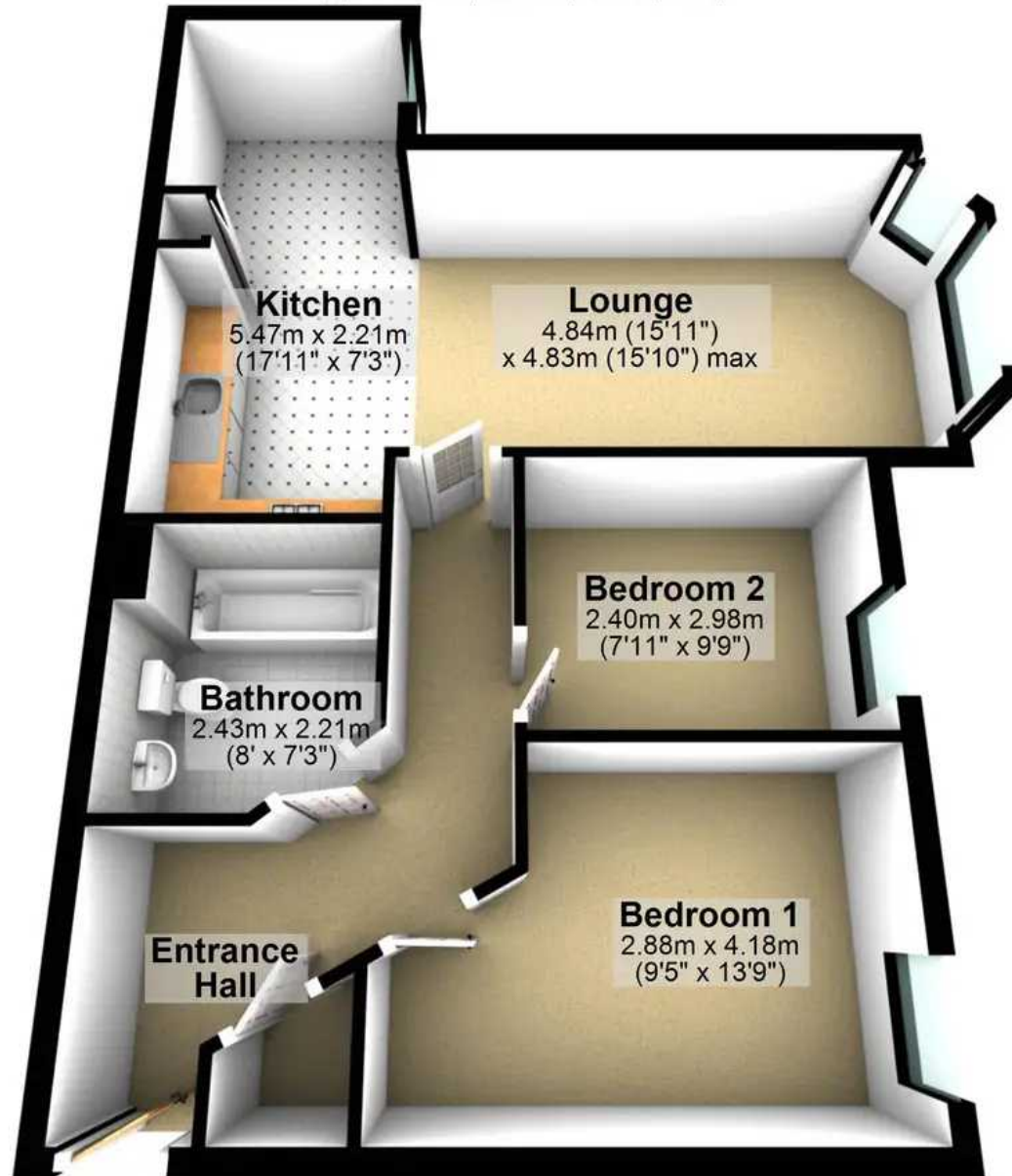
- SPACIOUS AND LIGHT TWO BEDROOM FIRST FLOOR APARTMENT
- HAERT OF ULTRA POPULAR BRINCLIFFE ON THE SOUTH WEST OF THE CITY
- AVAILABLE WITH NO UPWARD CHAIN AND VACANT ON COMPLETION
- PERFECT FOR A FIRST BUY INVESTMENT OR THOSE LOOKING TO DOWNSIZE
- CLOSE TO NUMEROUS LOCAL AMENITIES WITHIN NETHER EDGE OR SHARROW VALE
- ALLOCATED PARKING BAY AND AMPKE VISITOR SPACES
- VIEWING ESSENTIAL TO DO FULL JUSTICE





First Floor

Approx. 66.1 sq. metres (711.3 sq. feet)



Total area: approx. 66.1 sq. metres (711.3 sq. feet)

3 Bedroom Semi Detached House
Plan produced using PlanUp.

15, St Monarchs Gate



WHITEHORNES

Buy. Sell. Let. Relax!

0114 268 8533
info@whitehorns.com
www.whitehorns.com