



WHITEHORNS

Buy. Sell. Let. Relax!

0114 268 8533
info@whitehorns.com
www.whitehorns.com

24 Eyre Crescent, Norfolk Park

Sheffield

Guide Price **£230,000**

24 Eyre Crescent

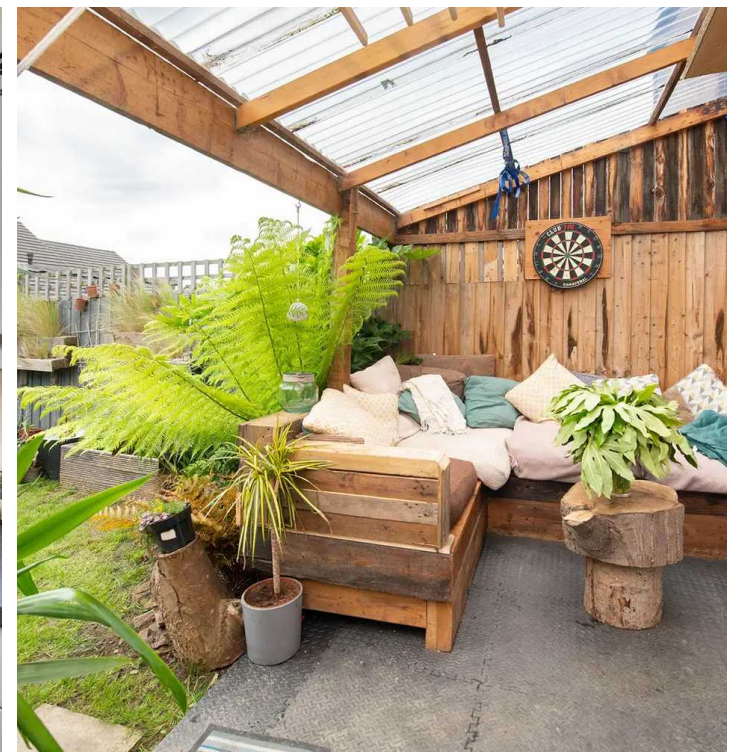
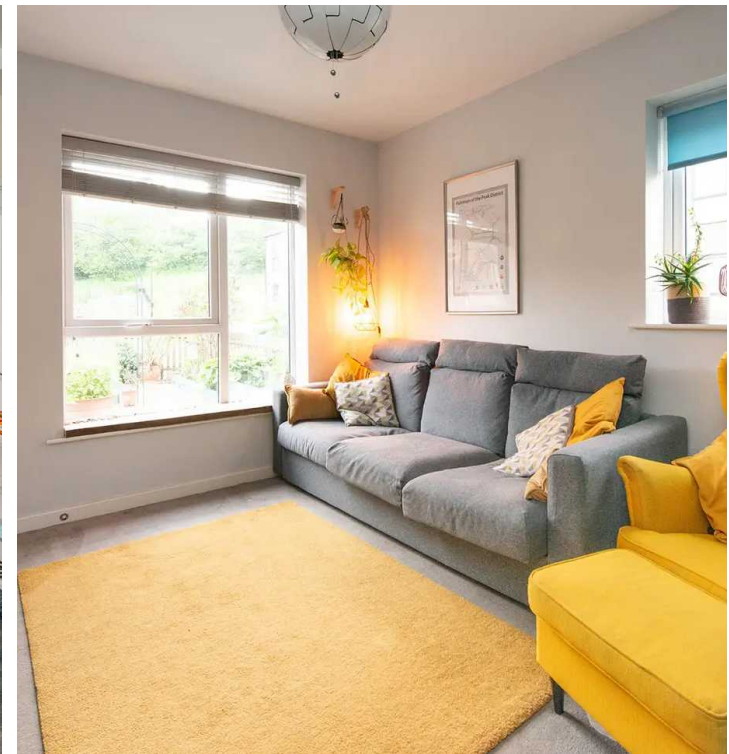
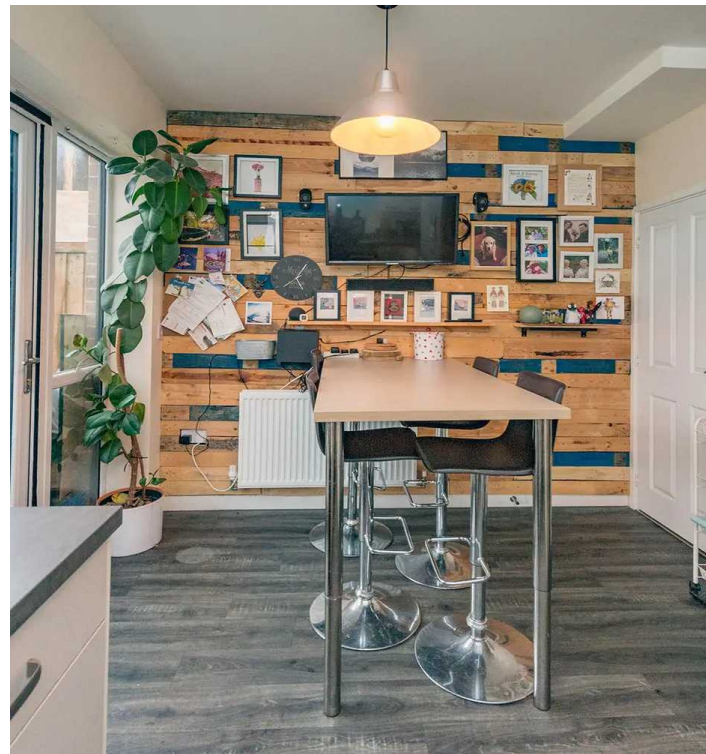
Norfolk Park, Sheffield

Immersed in the heart of this well-sought after location, this attractive leasehold two-bedroom semi-detached house occupies a quiet position ideal for first-time buyers or young families alike. Boasting a prime location with easy access to Norfolk Park, Sheffield train station, Sheffield University and the city center, residents also benefit from proximity to reputable local schooling catchments, including All Saints Catholic High School, Sheffield College and Norfolk Park Community Primary School. This newly built property briefly consists of a lounge, kitchen/diner, downstairs w/c, two bedrooms, bathroom and to the outside a superb feature of this property is the lean-to. This property also offers a private gated driveway along with a beautiful rear garden. It is easy to say that viewing is essential to do full justice of this property.

Council Tax band: A

Tenure: Leasehold

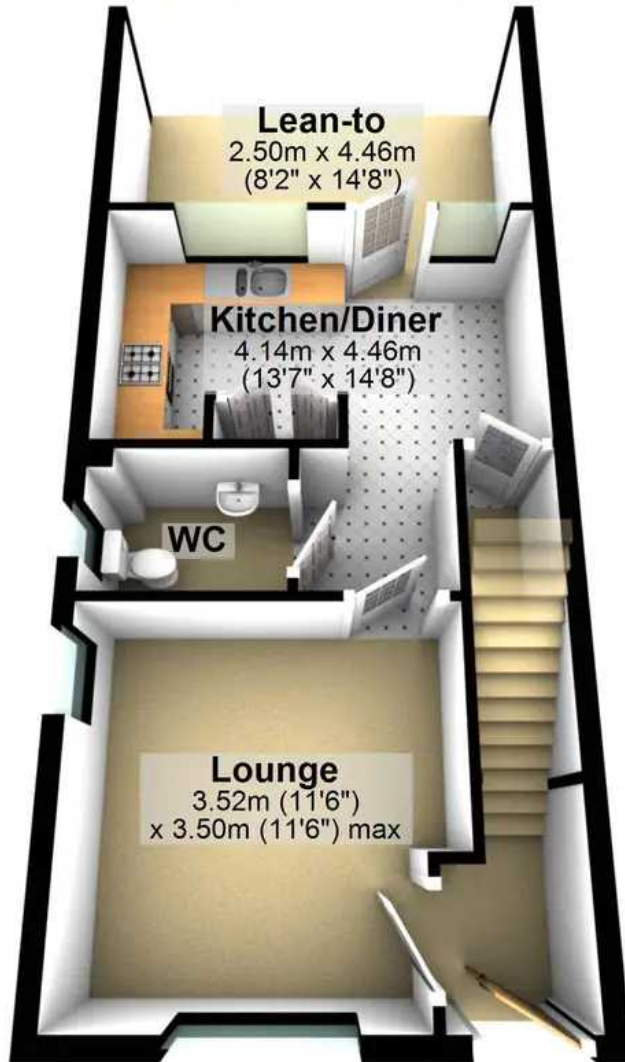
- TWO BEDROOM SEMI-DETACHED PROPERTY
- HEART OF THIS WELL SOUGHT AFTER LOCATION IN A QUIET POSITION
- IDEAL HOME FOR FIRST TIME BUYERS OR YOUNG FAMILIES ALIKE
- EASY ACCESS TO NORFOLK PARK
- LOCAL SCHOOLING CATCHMENTS INCLUDING ALL SAINTS CATHOLIC HIGH SCHOOL AND NORFOLK PARK COMMUNITY PRIMARY SCHOOL
- NEWLY BUILT PROPERTY IN 2018
- CLOSE TO LOCAL AMENITIES INCLUDING QUEENS ROAD RETAIL PARK
- REAR ENCLOSED GARDEN ALONG WITH SUPERB LEAN TO





Ground Floor

Approx. 46.2 sq. metres (497.2 sq. feet)



First Floor

Approx. 34.6 sq. metres (372.3 sq. feet)



Total area: approx. 80.8 sq. metres (869.5 sq. feet)

All measurements are approximate
Plan produced using PlanUp.