



WHITEHORNES

Buy. Sell. Let. Relax!

0114 268 8533
info@whitehorses.com
www.whitehorses.com

11 Riverdale, 343 Fulwood Road

Sheffield

Guide Price £250,000 – £260,000

11 Riverdale

Sheffield

An absolutely stunning, immaculately presented and very well proportioned, two double bedroom, stone built, converted mews apartment. Forming part of this prestigious residential development and set back quietly from Fulwood road the apartment is pitch perfect for the professional couple, those looking to downsize or the first time buyers. Enjoying a super light and spacious feel throughout that is epitomized by the open plan fitted, kitchen living diner. The property has been developed with a flare for design and offers a private entrance, parking bay and finished in natural stone the property offers a unique internal layout and simply must be viewed to be fully appreciated. Located in the very heart of this ultra popular residential suburb within a stones throw from Broomhill that enjoys a range of independent cafes, eateries and shops. The Royal Hallamshire hospital is within walking distance as are universities and not forgetting The Peak District is on the doorstep.

Council Tax band: B

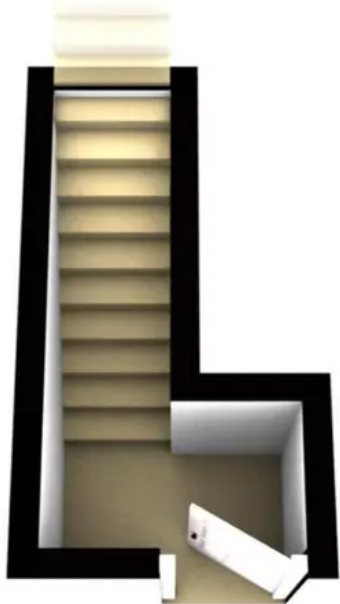
Tenure: Leasehold

- STUNNING TWO DOUBLE BEDROOM CONVERTED MEWS APARTMENT
- PRIVATE ENTRANCE AND ALLOCATED PARKING BAY
- SUPER LIGHT AND SPACIOUS ACCOMMODATION THROUGHOUT
- UNIQUE INTERNAL LAYOUT THAT NEEDS TO BE VIEWED TO BE FULLY APPRECIATED

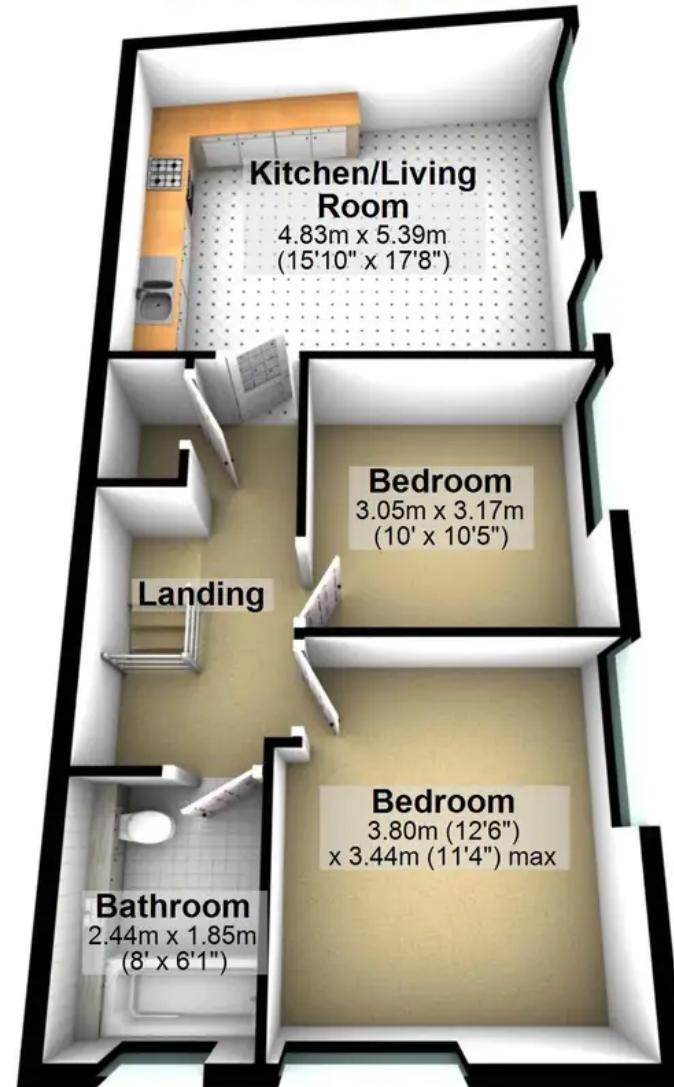




Ground Floor
Approx. 3.8 sq. metres (40.9 sq. feet)



First Floor
Approx. 62.6 sq. metres (674.2 sq. feet)



Total area: approx. 66.4 sq. metres (715.1 sq. feet)

All measurements are approximate
Plan produced using PlanUp.