



WHITEHORSES

Buy. Sell. Let. Relax!

0114 268 8533
info@whitehorses.com
www.whitehorses.com

Wilkin

182

182 Gleadless Road, Heeley

Sheffield

Offers in Region of £200,000

182 Gleadless Road

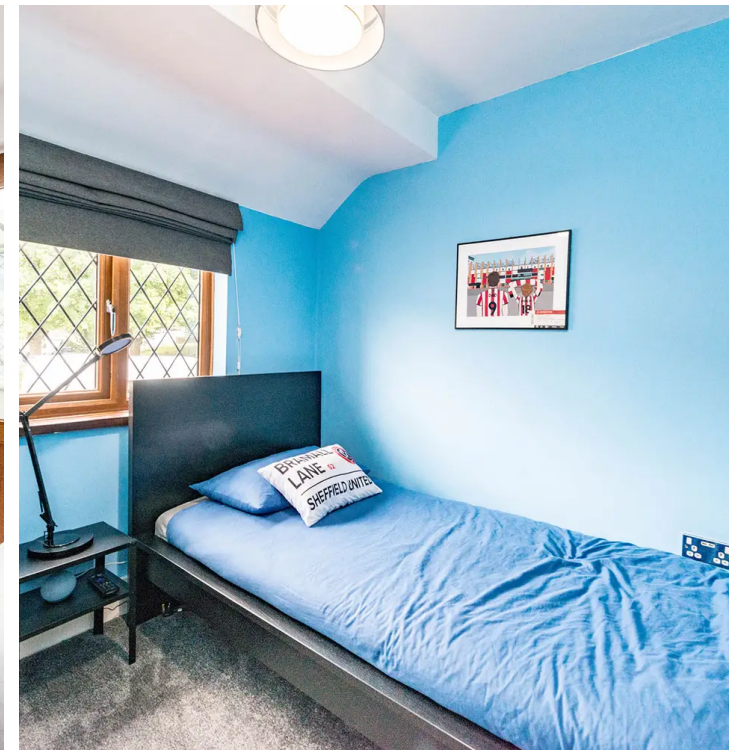
Heeley, Sheffield

Introducing this charming three bedroomed mid-terraced property, located in the heart of a popular residential suburb of Heeley this freehold property offers a convenient lifestyle close to numerous local amenities and transport links.

Council Tax band: A

Tenure: Freehold

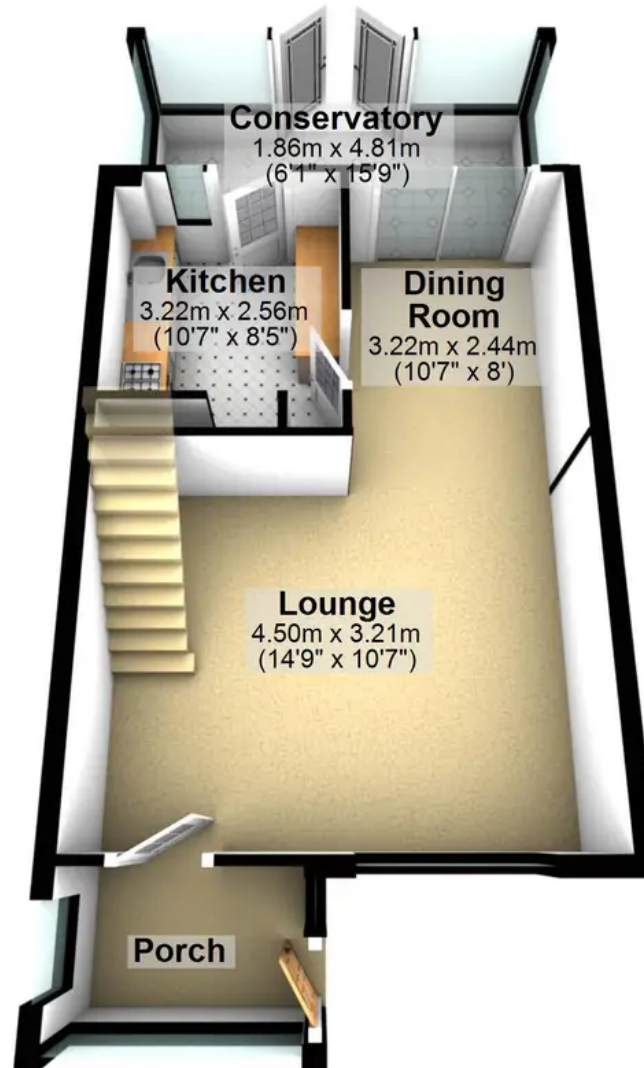
- THREE BEDROOMED MID TERRACED PROPERTY
- HEART OF POPULAR RESIDENTIAL SUBURB
- CLOSE TO NUMEROUS LOCAL AMENITIES AND TRANSPORT LINKS
- LOW MAINTENCE REAR GARDEN ALONG WITH AN OUTBUILDING
- AMPLE DRIVEWAY ALLOWING FOR EASY OFF ROAD PARKING
- EASY ACCESS TO THE CITY CENTRE
- TWO FLOORS OF ACCOMMODATION TOTALLING AN IMPRESSIVE 961 SQ FT
- IDEAL HOME FOR FIRST TIME BUYERS YOUNG FAMILIES OR INVESTORS
- FREEHOLD PROPERTY AND COUNCIL TAX BAND A
- VIEWING ESSENTIAL TO SEE THE POTENTIAL ON OFFER





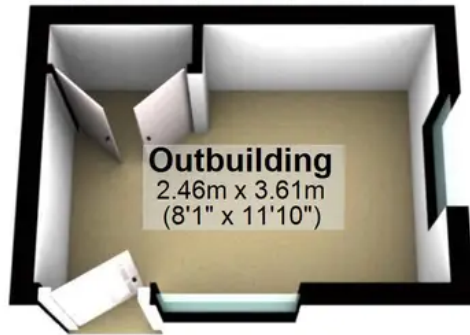
Ground Floor

Approx. 42.7 sq. metres (459.9 sq. feet)



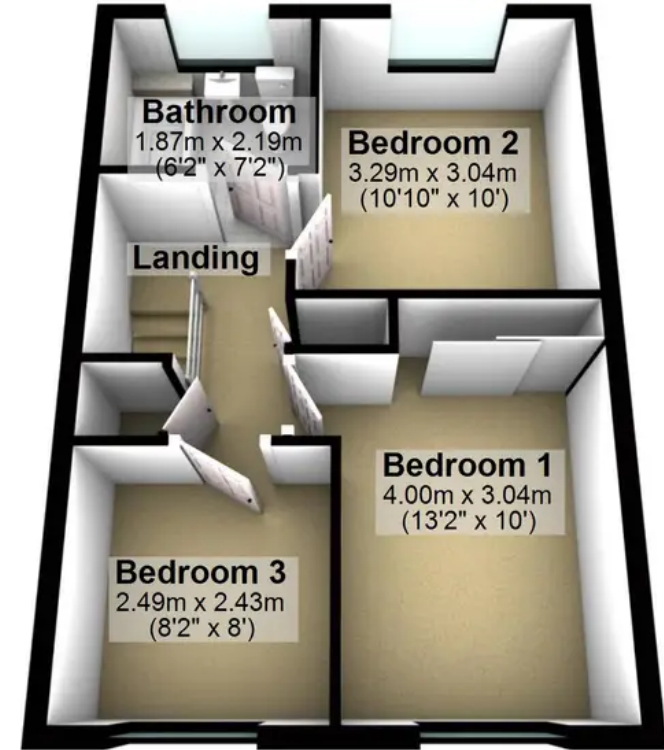
Outbuilding

Approx. 8.9 sq. metres (95.7 sq. feet)



First Floor

Approx. 37.7 sq. metres (406.3 sq. feet)



Total area: approx. 89.4 sq. metres (961.9 sq. feet)

All measurements are approximate
Plan produced using PlanUp.