



WHITEHORSES

Buy. Sell. Let. Relax!

0114 268 8533
info@whitehorses.com
www.whitehorses.com



36A Annesley Road, Sheffield

Sheffield

Offers Over **£140,000**

36A Annesley Road

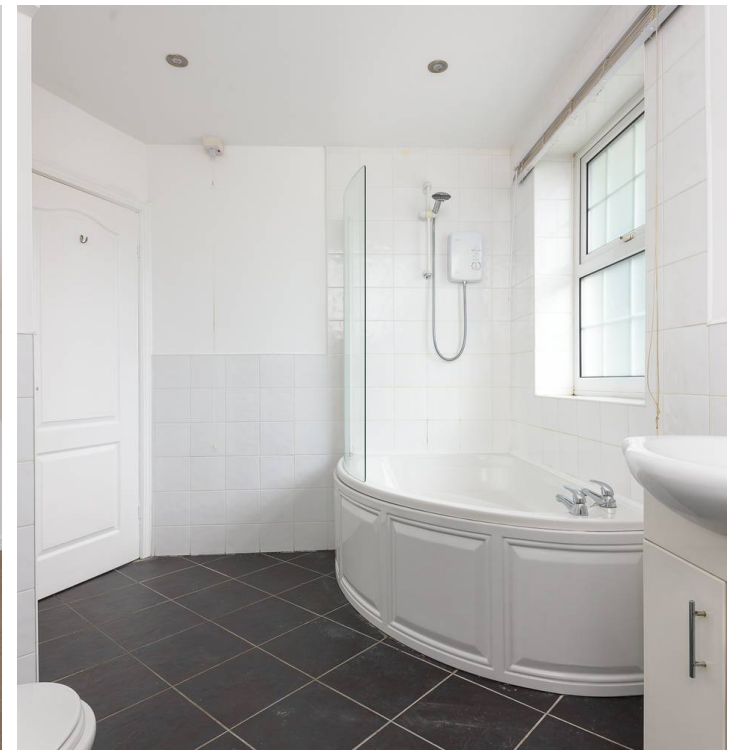
Sheffield, Sheffield

Large two bedroom, ground floor apartment located in the popular area of Greenhill, with easy access to the local facilities at Hutcliffe Wood, Meadow...

Council Tax band: A

Tenure: Freehold

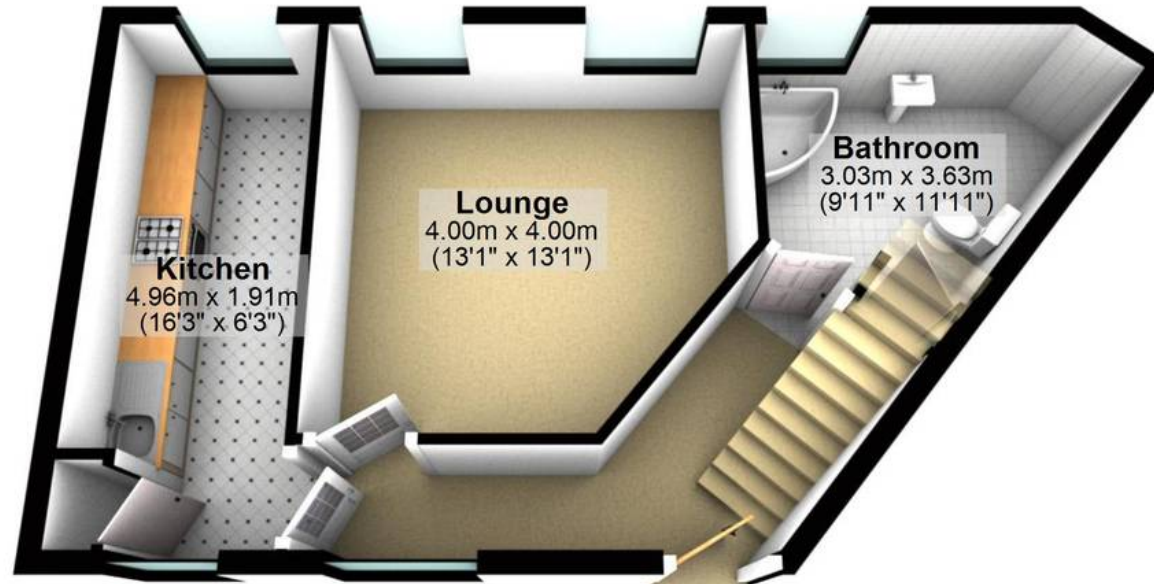
- TWO BEDROOMED DUPLEX APARTMENT
- GREAT LOCATION
- NO ONWARD CHAIN
- PERFECT FOR FIRST TIME BUYERS
- AMPLE PARKING
- VERY SPACIOUS
- CLOSE TO LOCAL AMENITIES
- GRAVES PARK WITHIN EASY WALKING DISTANCE
- EXCELLENT TRANSPORT LINKS





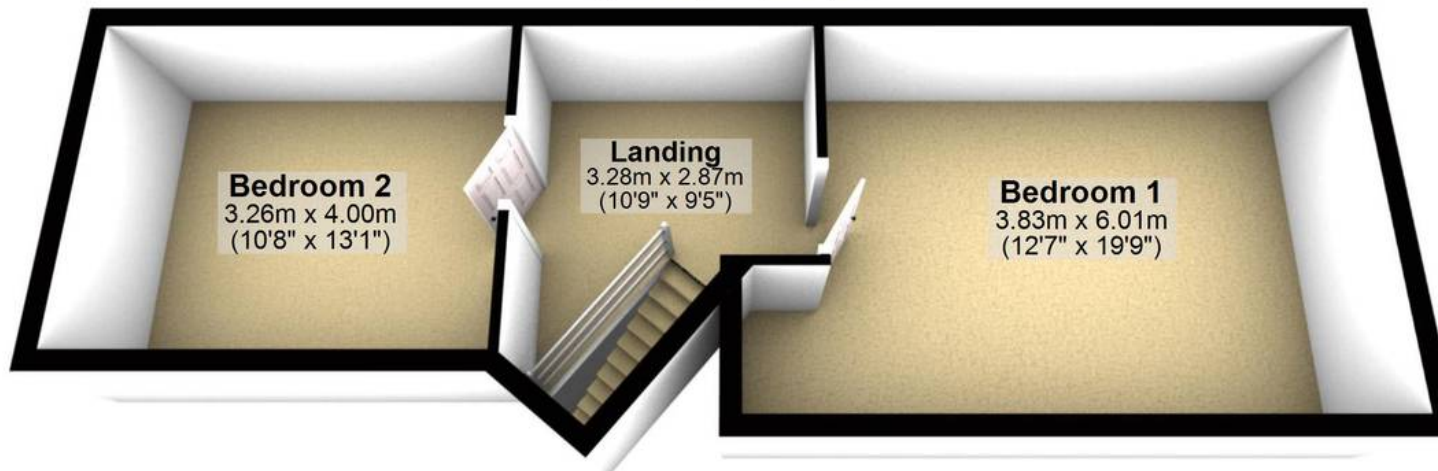
First Floor

Approx. 40.0 sq. metres (430.5 sq. feet)



Top Floor

Approx. 43.5 sq. metres (467.7 sq. feet)



Total area: approx. 83.4 sq. metres (898.2 sq. feet)

All measurements are approximate
Plan produced using PlanUp.