



WHITEHORSES

Buy. Sell. Let. Relax!

0114 268 8533
info@whitehorses.com
www.whitehorses.com

74 Wake Road, Nether Edge

Sheffield

Guide Price £325,000 - £350,000

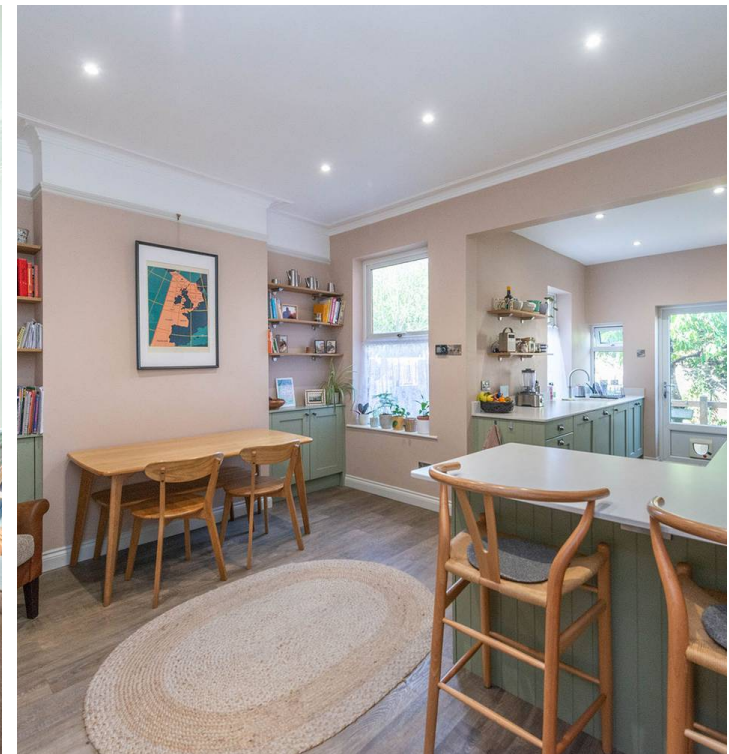
74 Wake Road

Nether Edge, Sheffield

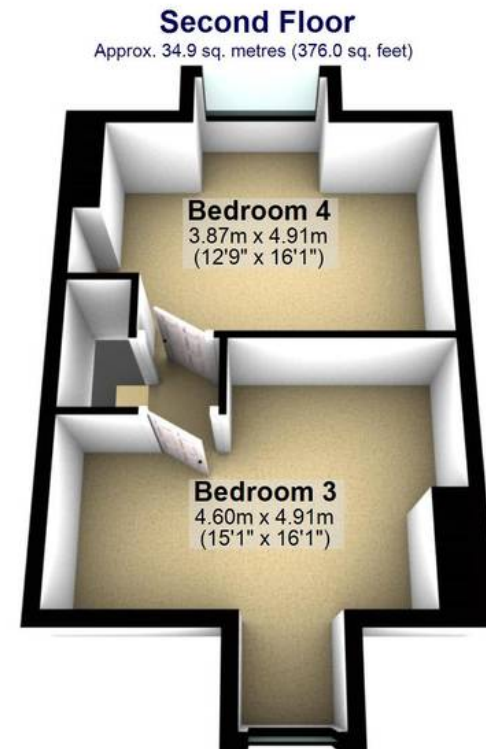
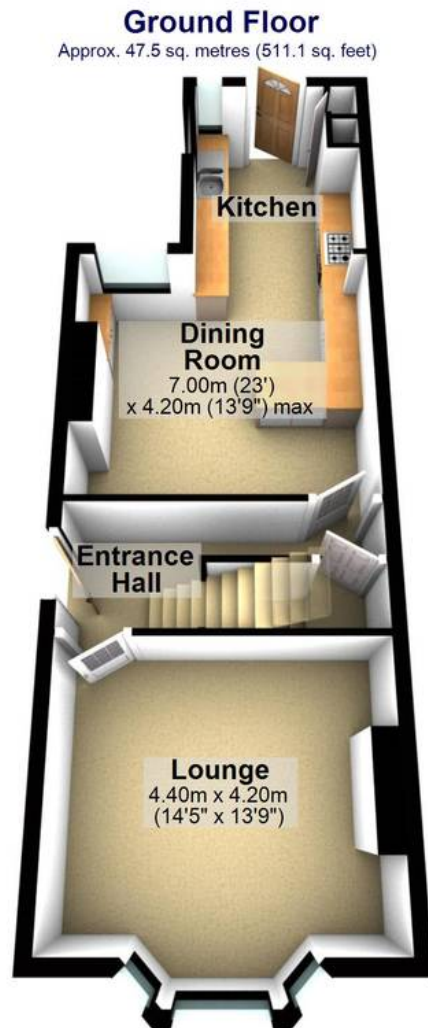
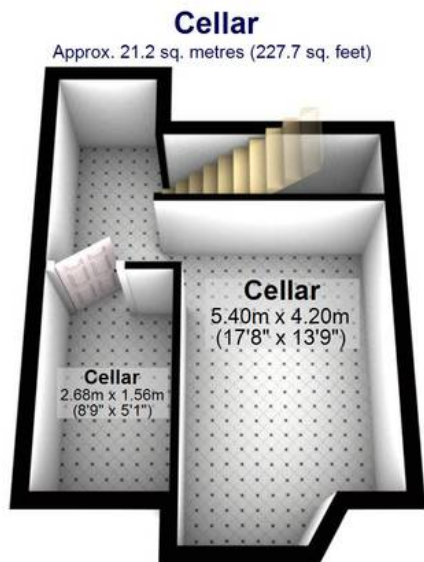
Nestled in the heart of the ultra-popular Nether Edge on the south-western outskirts of the city, this fabulous four double bedroom period villa terraced property presents a covetable blend of character and modern convenience. Spanning three floors and offering an impressive total of 1,693 sq feet, this home is ideal for a family seeking space or a professional couple. With excellent local school catchments including Mercia and High Storrs Secondary, this property stands out as a rare find in a sought-after area. The spacious living areas are complemented by a beautiful fitted open plan dining kitchen with easy access to the private garden, offering a seamless indoor-outdoor lifestyle. Additionally, there is easy on-road parking to the front. The sizeable cellar offers the exciting opportunity for a full conversion, providing the potential to add value in the future. Buzzing Nether Edge Village feel centre and Abbeydale Road, just moments away, host an array of independent cafes and

Council Tax band: B Tenure: Leasehold

- FABULOUS FOUR DOUBLE BEDROOM PERIOD VILLA TERRACED
- THREE FLOORS OF ACCOMMODATION TOTALLING AN IMPRESSIVE 1,693 SQ FEET
- DOUBLE REAR OFF SHOT PRIVATE GARDEN AND EASY ON ROAD PARKING TO THE FRONT
- HEART OF UKTRA POPULAR NETHER EDGE ON THE SOUTH WEST OF THE CITY
- EXCELLENT LOCAL SCHOOL CATCHMENTS







Total area: approx. 157.3 sq. metres (1693.5 sq. feet)

All measurements are approximate
Plan produced using PlanUp.