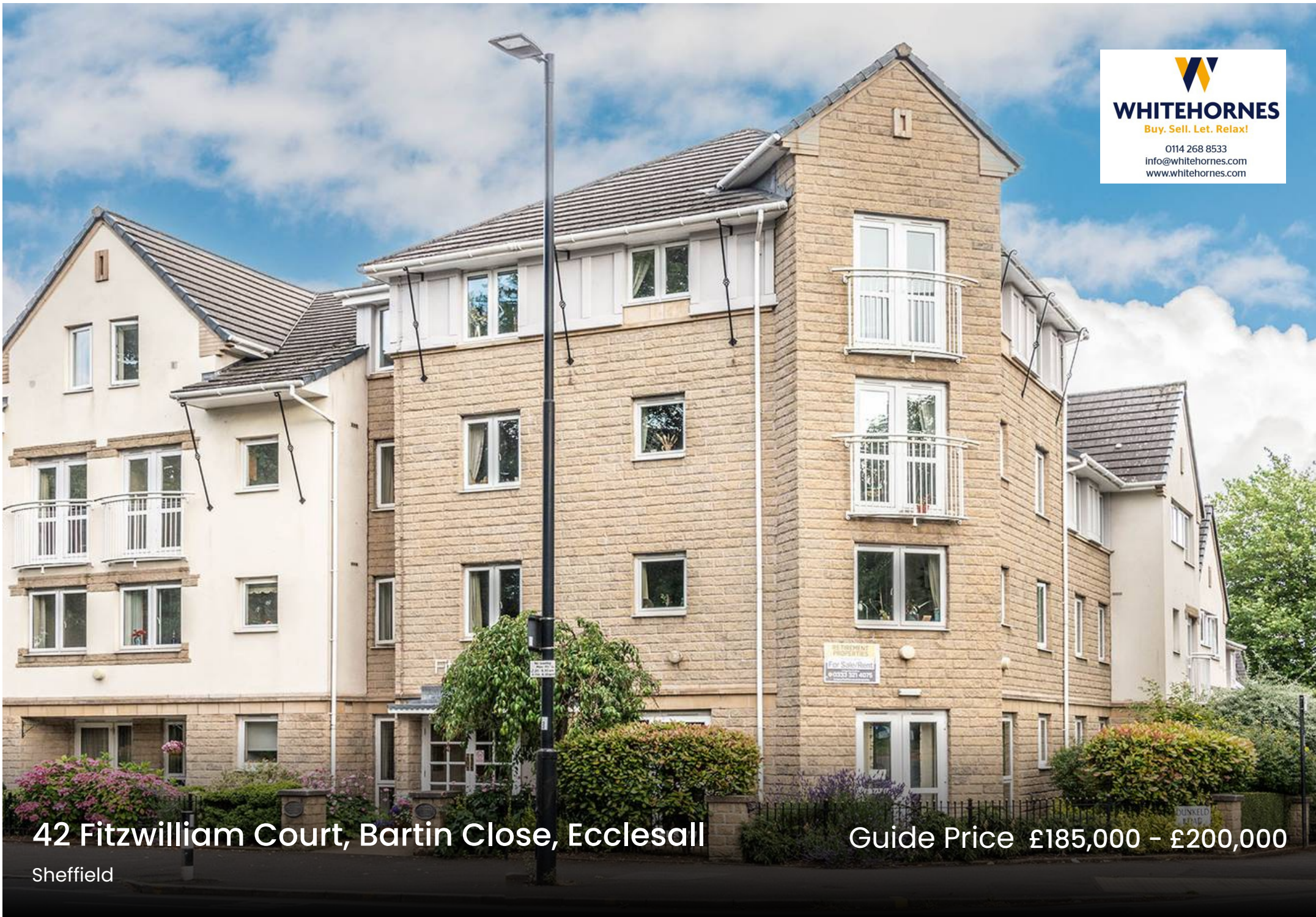




WHITEHORNES

Buy. Sell. Let. Relax!

0114 268 8533
info@whitehorns.com
www.whitehorns.com



42 Fitzwilliam Court, Bartin Close, Ecclesall

Sheffield

Guide Price £185,000 - £200,000

42 Fitzwilliam Court, Bartin Close

Ecclesall, Sheffield

Forming part of this superb retirement development in the very heart of Ecclesall is this fabulous, immaculately presented and very spacious two double bed roomed fifth floor apartment. Located at the front of the development that gives the new buyer some really far reaching views that are best enjoyed from the Juliet balcony, it is within easy access of Ecclesall Roads many amenities, shops, public transport links and of course The Peak District is right next door. With lift access to all floors, a communal residents lounge, family apartment that is available to book for over night stays and a pull cord assistance system. There are well kept communal gardens, free laundry room, ample parking and the property is available with no onward chain involved. This apartment is specially set up to cater for the over 60's market and will be of particular interest to those looking to downsize in later years. Enjoying an incredibly light feel throughout the property offers one of the largest styles in this wonderful

Council Tax band: D Tenure: Leasehold

- FABULOUS TWO BEDROOM SPACIOUS AND LIGHT FIFTH FLOOR APARTMENT
- JULIETTE BALCONY WITH WONDERFUL VIEWS
- COMMUNAL RESIDENTS LOUNGE AND LAUNDRY ROOM
- FAMILY APARTMENT AVAILABLE TO BOOK FOR OVER NIGHT STAYS
- LARGE CAR PARK AND AMPLE VISITOR BAYS
- FORMING PART OF THIS LOVELY RETIREMENT DEVELOPMENT
- COMMUNAL GARDENS TO THE REAR FOR THE RESIDENTS TO ENJOY





Fifth Floor

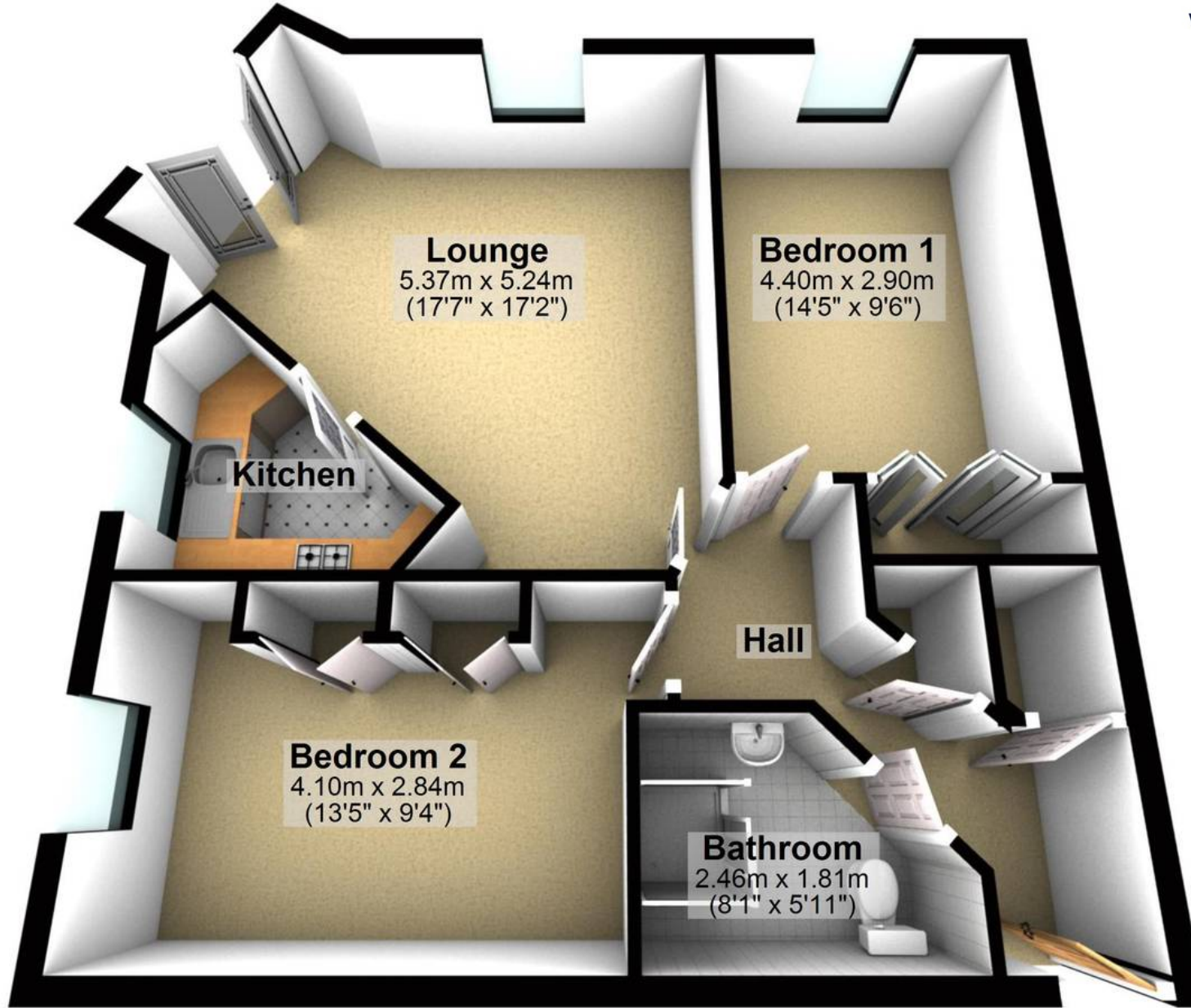
Approx. 65.3 sq. metres (702.4 sq. feet)



WHITEHORNS

Buy. Sell. Let. Relax!

0114 268 8533
info@whitehorns.com
www.whitehorns.com



Total area: approx. 65.3 sq. metres (702.4 sq. feet)

All measurements are approximate
Plan produced using PlanUp.